

INSTRUCTIONS

1. Original and/or subsequent record used to evaluate the corner position.
2. Description of evidence found, note discrepancies in the record, state method of establishing lost or obliterated corners.
3. Description of monument and accessories set to perpetuate the corner position.
4. Sketch of corner, show all pertinent data which can best be shown in a sketch example, corner marking, topography ties, position of accessories, etc.
5. Certification must be signed and sealed by Land Surveyor registered in the State of Montana.
6. Fill in Cross Index & Section Diagram at bottom of sheet.

CERTIFIED CORNER RECORDATION

Corner 4 of HES 276 T. 35 N. R. 32 W. Lincoln County

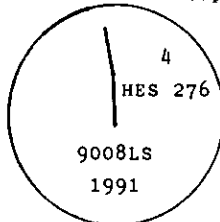
- I. 1914 HES 276 record by Elmer R. Johnson: "A spruce post, 6x6x42 ins., 30 ins. in the ground, marked 4 HES 276, on NE face and a nail in top for exact corner point from which

A cross(x) on a spruce, 8 ins. dia., bears $S16^{\circ}40'W$, 31 lks. (20.46 ft.) dist.
 A cross(x) on a spruce, 12 ins. dia., bears $N34^{\circ}30'W$, 19 lks. (12.54 ft.) dist.
 Each blazed and scribed 4 HES 276 BT.

Raise a mound of earth 4 ft. base, 2 ft. high NE of cor."

- II. Found no evidence of the original corner or accessories.

- III. At position determined by the Grant Boundary Adjustment between found corners 3 and 6, set a 3/4 in. diam., 30 ins. long alum. rod, 24 ins. in the ground with alum. cap mkd. as shown

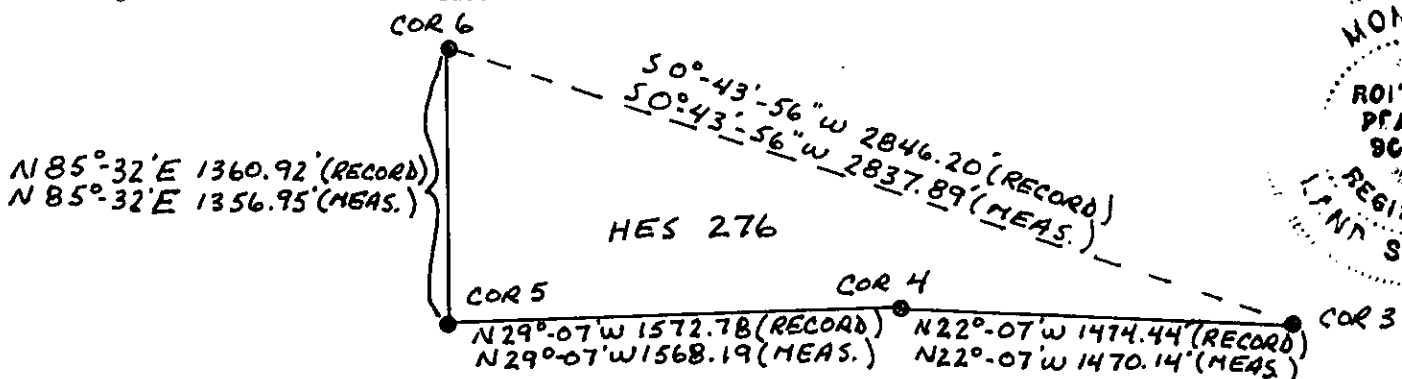


Established two new bearing trees:

A subalpine fir, 10 ins. diam., bears $S87^{\circ}W$, 51.4 ft. dist., mkd. 4 HES 276 BT.
 A spruce, 4 ins. diam., bears $N45^{\circ}W$, 9.9 ft. dist., mkd. X BT.

Painted red bands around the bearing trees and attached "Land Survey Monument" and "Bearing Tree" signs.

Set a galvanized steel guard post with "Land Survey Marker" and "Property Boundary" decals, $S22^{\circ}E$, 3 ft.
 Magnetic declination: 20° East



CERTIFICATION

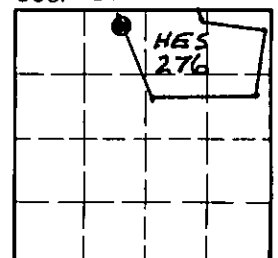
I, Kevin A. Todd
 certify the Information shown herein is true and correct.
Kevin A. Todd
 Signature Ground Party Chief
 I, Ronald A. Pearson
 certify that this Corner Record correctly represents work performed
 by me or under my direction in compliance with the "Corner
 Recordation Act" (70-22-101, et seq., M.C.A.)
Ronald A. Pearson
 Signature of Surveyor & Seal
 Date: 12/23/91 Reg. No. 9008 LS
 Employer: U.S. FOREST SERVICE

SKETCH OF CORNER

Office of Clerk and Recorder, County of Lincoln. This "corner
 record" was filed for record on Jan 16, 1992
 was noted on the cross-index plat and is assigned page No. 4614 A, in
 book No. _____

Cliff M. Cummings
 Official
 4 HES 276 35 N 32 W
 Cross Index No. _____ T. _____ R. _____ PMM

Sec. 24



• - corner this sheet