

## INSTRUCTIONS

1. Original and/or subsequent record used to evaluate the corner position.
2. Description of evidence found, note discrepancies in the record, state method of establishing lost or obliterated corners.
3. Description of monument and accessories set to perpetuate the corner position.
4. Sketch of corner, show all pertinent data which can best be shown in a sketch example, corner marking, topography ties, position of accessories, etc.
5. Certification must be signed and sealed by Land Surveyor registered in the State of Montana.
6. Fill in Cross Index & Section Diagram at bottom of sheet.

## CERTIFIED CORNER RECORDATION

Corner 3 of HES 276 T. 35 N. R. 32 W. Lincoln County

- I. 1914 HES 276 record by Elmer R. Johnson: Set for Cor. No. 3, a black pine post and 2 bearing trees

1923 HES 1194 record by J. P. Pfau: "To listing Cor. No. 8, identical with Cor. No. 3 of accepted HES No. 276, which is a wooden post, 6x6x12 ins. above ground marked and witnessed as described by the Survey General. As the post is badly decayed I remove it and reset the cor. as follows,

Place a small stone marked with a cross(x) under an iron post, 2 ins. dia. 36 ins. long, 24 ins. in the ground, with a brass cap, marked 3-HES276 and 1923-8-HES 1194 and a point on top for exact cor. point from which

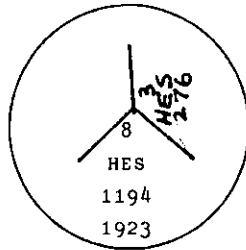
A cross(x) on a pine, 6 ins. dia., bears N54° E, 28 lks. (18.48 ft.) dist. (old BT)

A cross(x) on a pine, 8 ins. dia., bears S5° E, 80 lks. (52.80 ft.) dist. (new BT)

Each blazed and scribed 8 HES 1194 BT.

Raise a mound of earth 4 ft. base, 2 ft. high SE of cor."

- II. Found a 2 ins. diam. iron pipe, 15 ins. out of the ground with USDA Forest Service brass cap mkd. as shown



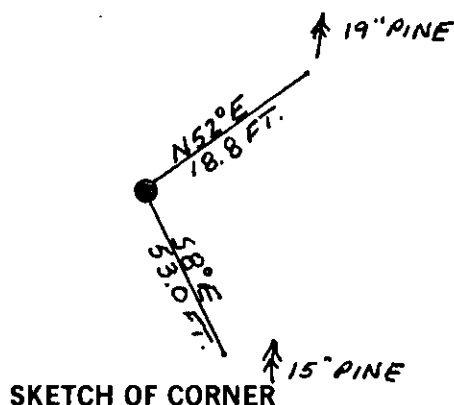
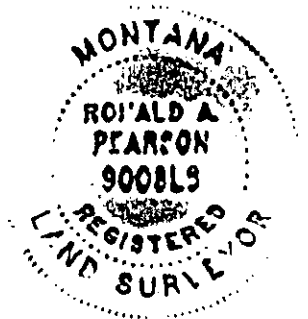
From which

A lodgepole pine, 19 ins. diam., bears N52° E, 18.8 ft. dist., mkd. 3 HES 276 BT, 8 HES 1194 BT.

A lodgepole pine, 15 ins. diam., bears S8° E, 53.0 ft. dist., mkd. 8 HES 1194 BT.

- III. Painted red bands around the bearing trees and attached "Land Survey Monument" and "Bearing Tree" signs.

Set a galvanized steel guard post with "Land Survey Marker" and "Property Boundary" decals, N22° W, 5 ft.  
Magnetic declination: 20° East



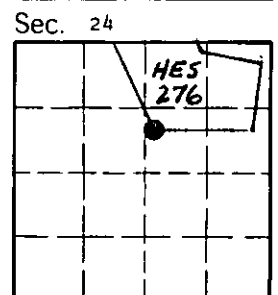
SKETCH OF CORNER

CERTIFICATION  
 I, Kevin A. Todd  
 certify the information shown herein is true and correct.  
Kevin A. Todd  
 Signature Ground Party Chief  
 I, Ronald A. Pearson  
 certify that this Corner Record correctly represents work performed by me or under my direction in compliance with the "Corner Recordation Act" (70-22-101, et seq., M.C.A.)  
Ronald A. Pearson  
 Signature of Surveyor & Seal  
 Date: 12/23/91 Reg. No. 9008 LS  
 Employer: U.S. FOREST SERVICE

Office of Clerk and Recorder, County of Lincoln. This "corner record" was filed for record on Jan 16, 1992 was noted on the cross-index plat and is assigned page No. 4613 A, in book No. \_\_\_\_\_

Coral M. Cummings  
 County Official  
 3 HES 276 35 N 32 W

Cross Index No. \_\_\_\_\_ T. \_\_\_\_\_ R. \_\_\_\_\_ PMM



• - corner this sheet