

INSTRUCTIONS

1. Original and/or subsequent record used to evaluate the corner position.
2. Description of evidence found, note discrepancies in the record, state method of establishing lost or obliterated corners.
3. Description of monument and accessories set to perpetuate the corner position.
4. Sketch of corner, show all pertinent data which can best be shown in a sketch example, corner marking, topography ties, position of accessories, etc.
5. Certification must be signed and sealed by Land Surveyor registered in the State of Montana.
6. Fill in Cross Index & Section Diagram at bottom of sheet.

CERTIFIED CORNER RECORDATION

2 of HES 276

1 of HES 347

35 N.,

32 W.,

Lincoln

Corner _____ T. _____ R. _____ P.M.M. _____ County

- I. 1914 HES 276 record by Elmer R. Johnson: "A black pine post, 6x6x42 ins., 30 ins. in the ground, marked 2 HES 276, on SW face and a nail in top for exact corner point from which

A cross(x) on a spruce, 8 ins. dia., bears $N22^{\circ}48'E$, 121 lks. (79.86 ft.) dist.A cross(x) on a black pine, 10 ins. dia., bears $N83^{\circ}59'E$, 96 lks. (63.36 ft.) dist.

Each blazed and scribed 2 HES 276 BT.

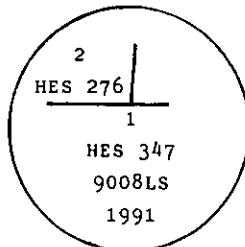
Raise a mound of earth 4 ft. base, 2 ft. high NW of cor."

1915 HES 343 record by Fred E. Thieme: Corner 6, identical with corner 2 of accepted HES 276.

1915 HES 347 record by Fred E. Thieme: Corner 1, identical with corner 2 of accepted HES 276.

- II. Found no evidence of the original corner or accessories.

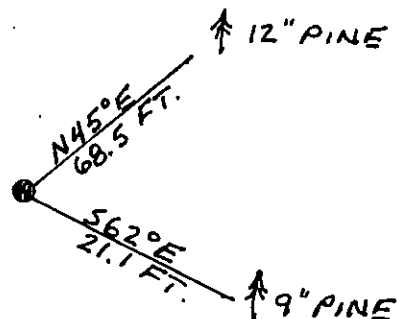
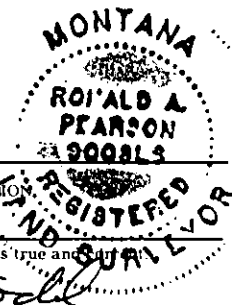
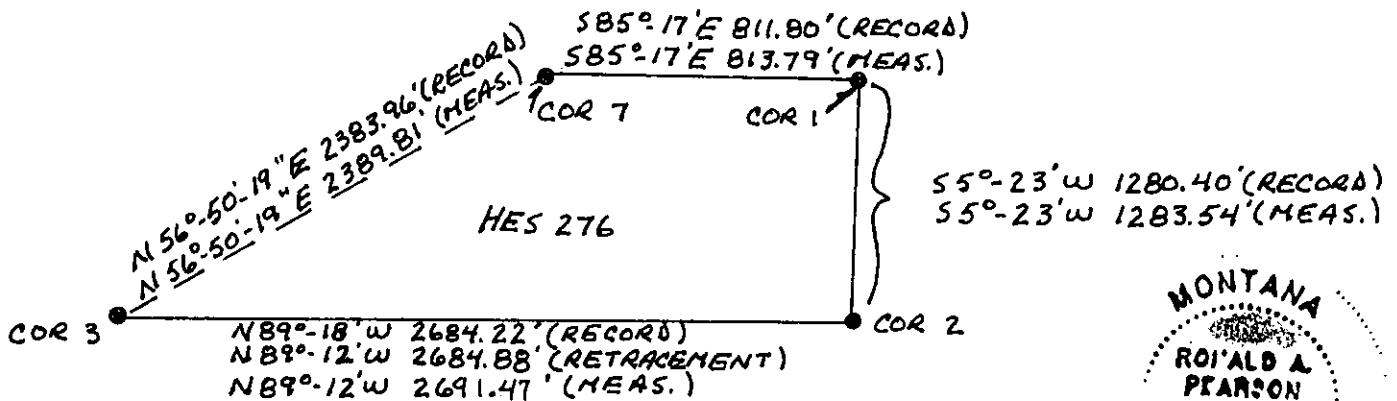
- III. At position determined by the Grant Boundary Adjustment between found corners 3 and 7, set a $3/4$ in. diam., 30 ins. long alum. rod, 24 ins. in the ground with alum. cap mkd. as shown



Established two new bearing trees:

A lodgepole pine, 12 ins. diam., bears $N45^{\circ}$ E, 68.5 ft. dist., mkd. 2 HES 276 BT.A lodgepole pine, 9 ins. diam., bears $S62^{\circ}$ E, 21.1 ft. dist., mkd. 1 HES 347 BT.

Painted red bands around the bearing trees and attached "Land Survey Monument" and "Bearing Tree" signs.
Set a galvanized steel guard post with "Land Survey Marker" and "Property Boundary" decals, East, 3 ft.
Magnetic declination: 20° East



SKETCH OF CORNER

CERTIFICATION
I, Kevin A. Todd, Registered Professional Land Surveyor, certify the information shown herein is true and correct.
Signature: *Kevin A. Todd*
Signature Ground Party Chief
I, Ronald A. Pearson, Registered Professional Land Surveyor, certify that this Corner Record correctly represents work performed by me or under my direction in compliance with the "Corner Recordation Act" (70-22-101, et seq., M.C.A.).
Signature: *Ronald A. Pearson*
Signature of Surveyor & Seal
Date: 12/23/91 Reg. No. 9008 LS
Employer: U.S. FOREST SERVICE

Office of Clerk and Recorder, County of Lincoln. This "corner record" was filed for record on Jan 16, 1992 was noted on the cross-index plat and is assigned page No. 4611 A, in book No. _____

Coral M. Cummings, Bill B...

County Official

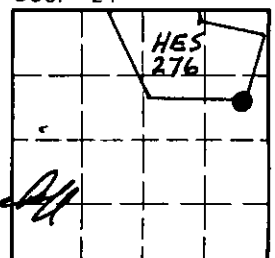
2 HES 276

35 N

32 W

Cross Index No. _____ T. _____ R. _____ PMM

Sec. 24



• - corner this sheet