

## INSTRUCTIONS

1. Original and/or subsequent record used to evaluate the corner position.
2. Description of evidence found, note discrepancies in the record, state method of establishing lost or obliterated corners.
3. Description of monument and accessories set to perpetuate the corner position.
4. Sketch of corner, show all pertinent data which can best be shown in a sketch example, corner marking, topography ties, position of accessories, etc.
5. Certification must be signed and sealed by Land Surveyor registered in the State of Montana.
6. Fill in Cross Index & Section Diagram at bottom of sheet.

## CERTIFIED CORNER RECORDATION

3 of H.E.S. 454  
 Corner 4 of H.E.S. 452 T. 35 N., R. 32 W., P.M.M. Lincoln County

- I. 1915, H.E.S. 452 original record by Fred E. Thieme: "Set for Cor. No. 4, a small stone marked with a cross (x) under a quartzite stone, 25x12x7 ins., 15 ins. in the ground, marked 4 HES 452 on S face, and a cross (x) on top for the exact corner point, from which

A cross (x) on a larch tree, 22 ins. dia., bears  $N17^{\circ}27'W$ , 34 lks. dist.

A cross (x) on a larch tree, 18 ins. dia., bears  $S67^{\circ}30'E$ , 53 lks. dist.; each blazed and scribed 4 HES 452 BT.

Raise a mound of earth and stone, 4 ft. base, 2 ft. high S of corner."

1915, H.E.S. 454 original record by Fred E. Thieme: "Identical with Cor. No. 4 of unapproved HES 452, a quartzite stone 10x12x7 ins. above ground, as set by me on July 30, 1915. I mark this stone for Cor. No. 3, 3 HES 454 on E face, from the cross (x) on top

A cross (x) on a larch tree, 22 ins. dia., bears  $N17^{\circ}27'W$ , 24 lks. dist.

A cross (x) on a larch tree, 18 ins. dia., bears  $S67^{\circ}30'E$ , 53 lks. dist.; each blazed and scribed 3 HES 454 BT."

- II. Found, a firmly set stone, 6x12 ins., 8 ins. out of ground, marked 3-HES 454 on East face and S 2 on south face which has been broken off, from which

A saw stump, 27 ins. dia. by 2.5 ft. high, bears  $N18^{\circ}W$ , 15.9 ft. (24.1 lks.) dist.

SE bearing tree not found due to logging activity.

Fence Corner post, bears east, 0.5 ft. dist.

- III. To perpetuate the stone location and not necessarily the correct true original position of Cor. 4 (unable to verify position because of conflicting record distances of the NW bearing tree: HES 452: 34 lks. vs. HES 454: 24 lks.) I establish two new bearing trees:

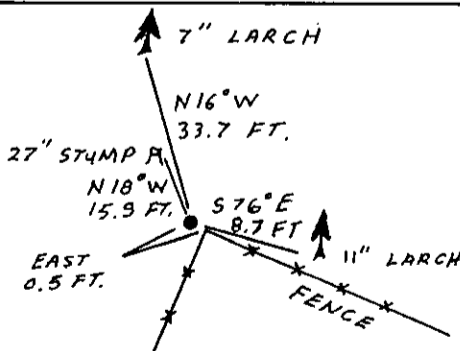
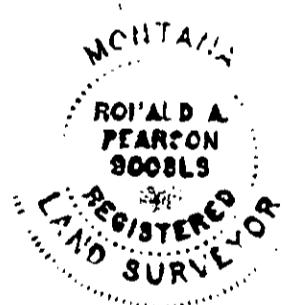
A larch, 11 ins. dia., bears  $S76^{\circ}E$ , 8.7 ft. dist., scribed 4 HES 452 BT.

A larch, 7 ins. dia., bears  $N16^{\circ}W$ , 33.7 ft. dist., scribed X BT.

Painted red bands around the bearing trees and attached Land Survey Monument and Bearing Tree signs.

Set a 6 ft. galvanized steel guard post with Land Survey Marker and Property Boundary decals,  $S32^{\circ}W$ , 3 ft.

Magnetic Declination:  $20^{\circ}30'$  East



SKETCH OF CORNER

## CERTIFICATION

I, Gary C. Crismon  
 certify the information shown herein is true and correct.

*Gary C. Crismon*  
 Signature Ground Party Chief

I, Ronald A. Pearson  
 certify that this Corner Record correctly represents work performed by me or under my direction in compliance with the "Corner Recordation Act" (70-22101, et seq., M.C.A.)

*Ronald A. Pearson*  
 Signature of Surveyor & Seal

Date: 1/3/90 Reg. No. 9008 LS

Employer: U.S. FOREST SERVICE

Office of Clerk and Recorder, County of Lincoln. This "corner record" was filed for record on Jan 16, 1990

was noted on the cross-index plat and is assigned page No. 4213, in

book No. \_\_\_\_\_

*Janet BF Sigel by Sue Smith*  
 County Official

Cross Index No. 4 HES 452 T. 35 N. R. 32 W. PMM

