

INSTRUCTIONS

1. Original and/or subsequent record used to evaluate the corner position.
2. Description of evidence found, note discrepancies in the record, state method of establishing lost or obliterated corners.
3. Description of monument and accessories set to perpetuate the corner position.
4. Sketch of corner, show all pertinent data which can best be shown in a sketch example, corner marking, topography ties, position of accessories, etc.
5. Certification must be signed and sealed by Land Surveyor registered in the State of Montana.
6. Fill in Cross Index & Section Diagram at bottom of sheet.

CERTIFIED CORNER RECORDATION

2 of H.E.S. 454
 Corner 1 of H.E.S. 452 T. 35 N., R. 32 W., P.M.M. Lincoln County

- I. 1915, H.E.S. 452, original record by Fred E. Thieme: "Set for Cor. No. 1, a small stone, marked with a cross (x) under a shale stone, 24x15x8 ins., 14 ins. in the ground, marked 1 HES 452 on W face, and a cross (x) on top for the exact corner point, from which

A cross (x) on a larch tree, 34 ins. dia., bears $S11^{\circ}45'W$, 102 lks. dist.

A cross (x) on a lodgepole pine tree, 9 ins. dia., bears $N66^{\circ}25'W$, 37 lks. dist.; each blazed and scribed 1 HES 452 BT.

Raise a mound of stone, 4 ft. base, 2 ft. high W of corner."

1915, H.E.S. 454, record by Fred E. Thieme: "Identical with Cor. No. 1 of unapproved HES No. 452, a shale stone 10x15x8 ins. above ground, as set by me on July 29, 1915. I mark this stone for Cor. No. 2, 2 HES 454 on N face, from the cross (x) on top"

Utilized same bearing trees as HES 452.

"Raise a mound of stone, 4 ft. base, 2 ft. high, N. of corner."

- II. Found, a set stone, 12x4 ins., 7 ins. out of the ground, marked 1 HES 452 on SW face (red: W face) and 2 HES 454 on NE face, from which

A larch saw stump, 38 ins. dia., bears $S12^{\circ}W$, 67.8 ft. (102.7 lks.) dist., scribe 454 452 BT is visible.

A mound of stone, 3 ft. base, 1.5 ft. high, bears $N26^{\circ}W$, 4 ft. dist.

A scattered mound of stone, bears south.

- III. Established two new bearing trees:

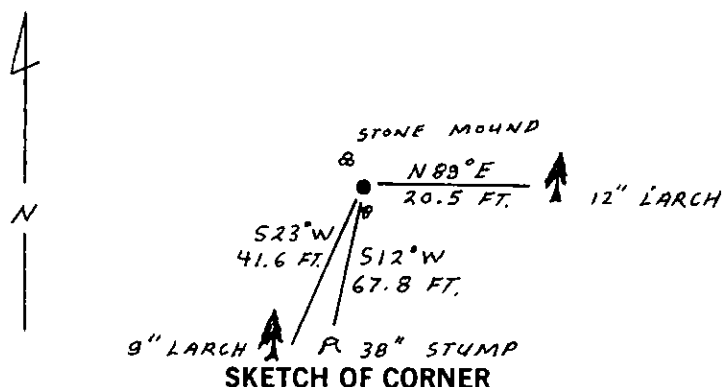
A larch, 9 ins. dia., bears $S23^{\circ}W$, 41.6 ft. dist., scribed X BT

A larch, 12 ins. dia., bears $N89^{\circ}E$, 20.5 ft. dist., scribed 1 HES 452 BT.

Painted red bands around the bearing trees and attached Land Survey Monument and Bearing Tree signs.

Set a 6 ft. galvanized steel guard post with Land Survey Marker and Property Boundary decals, $N55^{\circ}W$, 3 ft.

Magnetic Declination: $20^{\circ}30'$ East



CERTIFICATION

I, Gary C. Crismon
 certify the information shown herein is true and correct.

Gary C. Crismon
 Signature Ground Party Chief

I, Ronald A. Pearson
 certify that this Corner Record correctly represents work performed by me or under my direction in compliance with the "Corner Recordation Act" (70-22101, et seq., M.C.A.)

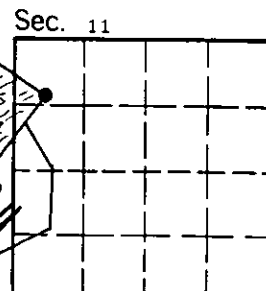
Ronald A. Pearson
 Signature of Surveyor & Seal

Date: 1/3/90 Reg. No. 9008 LS

Employer: U.S. FOREST SERVICE

Office of Clerk and Recorder, County of Lincoln. This "corner record" was filed for record on Jan 16, 1990 was noted on the cross-index plat and is assigned page No. 4212, in book No. _____

Janet BF Sigel by Bill Sigel
 County Official



Cross Index No. 1 HES 452 T. 35 N. R. 32 W. P.M.M.

• - corner this sheet