

INSTRUCTIONS

1. Original and/or subsequent record used to evaluate the corner position.
2. Description of evidence found, note discrepancies in the record, state method of establishing lost or obliterated corners.
3. Description of monument and accessories set to perpetuate the corner position.
4. Sketch of corner, show all pertinent data which can best be shown in a sketch example, corner marking, topography ties, position of accessories, etc.
5. Certification must be signed and sealed by Land Surveyor registered in the State of Montana.
6. Fill in Cross Index & Section Diagram at bottom of sheet.

CERTIFIED CORNER RECORDATION

Corner 3 of H.E.S. 452 T. 35 N. R. 32 W. P.M.M. Lincoln County

- I. 1915, H.E.S. original record by Fred E. Thieme: "Set for Cor. No. 3, a small stone, marked with a cross (x) under a granite stone, 24x12x4 ins., 14 ins. in the ground, marked 3 HES 352 (typing error, in original notes) on E. face, and a cross (x) on top for the exact corner point, from which

A cross (x) on a larch tree, 11 ins. dia., bears $N51^{\circ}10'E$, 16 lks. dist.

A cross (x) on a larch tree, 11 ins. dia., bears $N63^{\circ}30'W$, 13 lks. dist.; each blazed and scribed 3 H.E.S. 452 BT.

Raise a mound of earth, 4 ft. base, 2 ft. high E of corner."

- II. Found, a firmly set stone, 6x4 ins., 7 ins. out of ground, marked 3 HES 452 on E face with X on top from which

A larch, 17 ins. dia., bears $N61^{\circ}W$, 9.0 ft. (13.6 lks.) dist., scribe overgrown.

- III. Established one new bearing tree:

A spruce, 11 ins. dia., bears $S43^{\circ}E$, 35.4 ft. dist., scribed X BT.

Painted red bands around the bearing trees and attached Land Survey Monument and Bearing Tree signs.

Set a 6 ft. galvanized steel guard post with Land Survey Marker and Property Boundary decals, $N35^{\circ}E$, 2 ft.

Magnetic Declination: $20^{\circ}30'$ East



CERTIFICATION

I, Robin Glazier
certify the information shown herein is true and correct.

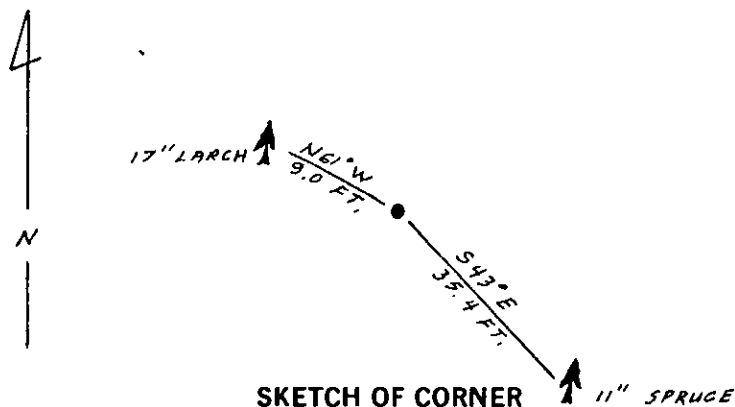
Signature Ground Party Chief

I, Ronald A. Pearson
certify that this Corner Record correctly represents work performed by me or under my direction in compliance with the "Corner Recordation Act" (70-22-101, et seq., M.C.A.)

Signature of Surveyor & Seal

Date: 1/2/90 Reg. No. 9008 LS

Employer: U.S. FOREST SERVICE



SKETCH OF CORNER

11" SPRUCE

Office of Clerk and Recorder, County of Lincoln. This "corner

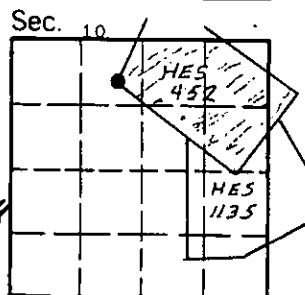
record" was filed for record on Jan 16, 1990

was noted on the cross-index plat and is assigned page No. 4210, in

book No. _____

Janet B. Sigel by Sue Bailey
County Official

Cross Index No. 3 HES 452 T. 35 N R. 32 W P.M.M.



• - corner this sheet