

INSTRUCTIONS

1. Original and/or subsequent record used to evaluate the corner position.
2. Description of evidence found, note discrepancies in the record, state method of establishing lost or obliterated corners.
3. Description of monument and accessories set to perpetuate the corner position.
4. Sketch of corner, show all pertinent data which can best be shown in a sketch example, corner marking, topography ties, position of accessories, etc.
5. Certification must be signed and sealed by Land Surveyor registered in the State of Montana.
6. Fill in Cross Index & Section Diagram at bottom of sheet.

CERTIFIED CORNER RECORDATION

Corner 2 of H.E.S. 1135 T. 35 N. R. 32 W. P.M.M. Lincoln County

- I. 1922, H.E.S. original record by J. P. Pfau: "Place a small stone marked with a cross (x) under a slatestone 30x8x8 ins., 20 ins. in the ground, marked 2 HES 1135 on SW face, and a cross (x) on top for the exact cor. point, from which

A cross (x) on a lodgepole pine tree, 6 ins. dia., bears $S24^{\circ}30'W$, 17 lks. dist.

A cross (x) on a lodgepole pine tree, 6 ins. dia., bears $N67^{\circ}50'W$, 57 lks. dist., each blazed and scribed 2 H.E.S. 1135 BT.

Raise a mound of stone 4 ft. base, 2 ft. high SW of Cor."

- II. Found, a set stone, 7x7 ins., 7 ins. out of the ground, marked 2 HES 1135 on the W face (rcd: SW face), from which

A dead pine, 10 ins. dia., bears $S24^{\circ}W$, 11.6 ft. (17.6 lks.) dist., scribing 2 HES 1135 BT is visible.

A snag, 6 ins. dia., bears $N68^{\circ}W$, 38.5 ft. (58.3 lks.) dist., scribing BT is visible.

- III. Established two new bearing trees:

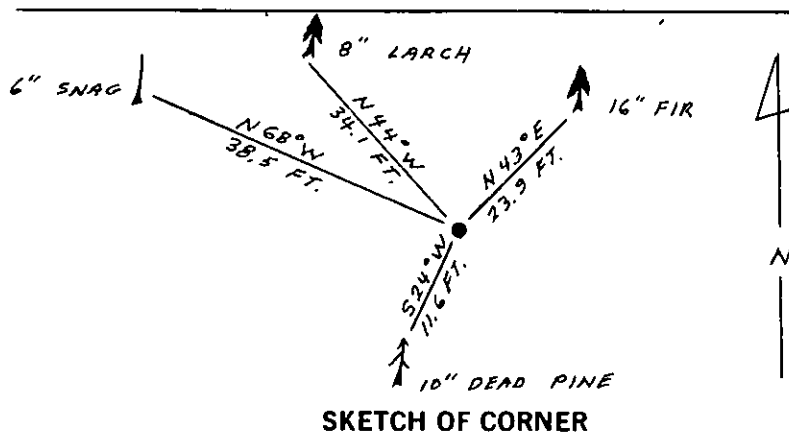
A larch, 8 ins. dia., bears $N44^{\circ}W$, 34.1 ft. dist., scribed 2 HES 1135 BT.

A douglas fir, 16 ins. dia., bears $N43^{\circ}E$, 23.9 ft. dist., scribed 2 HES 1135 BT.

Painted red bands around the bearing trees and attached Land Survey Monument and Bearing Tree signs.

Set a 6 ft. galvanized steel guard post with Land Survey Marker and Property Boundary decals, $N30^{\circ}W$, 3 ft.

Magnetic Declination: $20^{\circ}30'$ East



CERTIFICATION

I, Gary C. Crismon
certify the information shown herein is true and correct.

Gary C. Crismon
Signature Ground Party Chief

I, Ronald A. Pearson
certify that this Corner Record correctly represents work performed by me or under my direction in compliance with the "Corner Recordation Act" (70-22-101, et seq., M.C.A.)

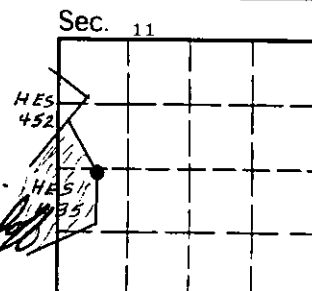
Ronald A. Pearson
Signature of Surveyor & Seal

Date: 1/2/90 Reg. No. 9008 LS

Employer: U. S. FOREST SERVICE

Office of Clerk and Recorder, County of Lincoln. This "corner record" was filed for record on Jan 16, 1990 was noted on the cross-index plat and is assigned page No. 4207, in book No. _____

Just H. Slightly
County Official



Cross Index No. 2 HES 1135 T. 35 N R. 32 W P.M.M.

• - corner this sheet