

INSTRUCTIONS

1. Original and/or subsequent record used to evaluate the corner position.
2. Description of evidence found, note discrepancies in the record, state method of establishing lost or obliterated corners.
3. Description of monument and accessories set to perpetuate the corner position.
4. Sketch of corner, show all pertinent data which can best be shown in a sketch example, corner marking, topography ties, position of accessories, etc.
5. Certification must be signed and sealed by Land Surveyor registered in the State of Montana.
6. Fill in Cross Index & Section Diagram at bottom of sheet.

CERTIFIED CORNER RECORDATION

Corner 1 of HES 406 T. 35 N. R. 32 W. P.M.M. Lincoln County

- I. 1915, original HES record by Fred E. Thieme: "Set for cor. no. 1, a small stone, marked with a cross (x) under a sandstone, 24x11x5 ins., 14 ins. in the ground, marked 1 H.E.S. 406 on SE. face, and a cross (x) on top for the exact corner point, from which

A cross (x) on a lodgepole pine tree, 11 ins. dia., bears $S8^{\circ}10'E$, 28 lks. dist.

A cross (x) on a larch tree, 28 ins. dia., bears $N66^{\circ}35'E$, 12 lks. dist.; each blazed and scribed 1 H.E.S. 406 BT.

Raise a mound of stone, 4 ft. base, 2 ft. high., SE. of corner."

- II. Found a firmly set stone, 3x11 ins., 7 ins. out of ground, marked 1-HES 406 on SE face and X on top, from which

A dead lodgepole pine, 17 ins. dia., bears $S8^{\circ}E$, 18.3 ft. (27.7 lks.) dist., visible scribing 1-HES 406

A larch stump, 6 ft. high by 25 ins. dia., bears $N66^{\circ}E$, 8.6 ft. (13.0 lks.) dist., visible scribing 1-HES 406.

A mound of stone, 2 1/2 ft. base, 1 ft. high, $S42^{\circ}E$, 5.8 ft. dist.

- III. Established two new bearing trees:

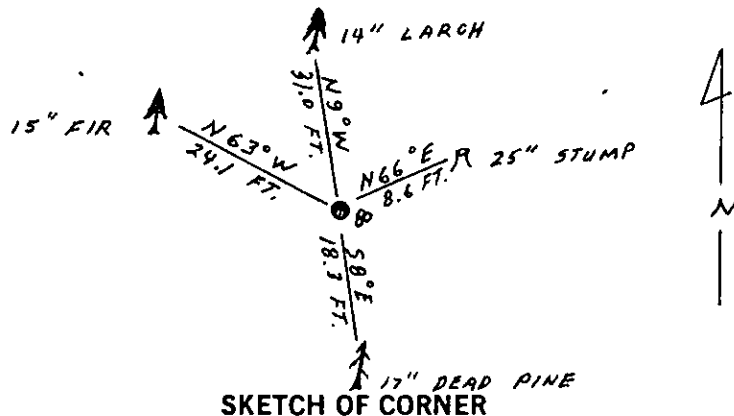
A larch, 14 ins. dia., bears $N9^{\circ}W$, 31.0 ft. dist., scribed 1 HES 406 BT.

A douglas fir, 15 ins. dia., bears $N63^{\circ}W$, 24.1 ft. dist., scribed 1 HES 406 BT.

Painted red bands around the bearing trees and attached Land Survey Monument and Bearing Tree signs where needed.

Set a 6 ft. galvanized steel guard post with Land Survey Marker and Property Boundary decals, $S81^{\circ}E$, 4.5 ft.

Magnetic Declination: $20^{\circ}30'$ East



CERTIFICATION

I, Gary C. Crismon
certify the information shown herein is true and correct.

Gary C. Crismon
Signature Ground Party Chief

I, Alvah F. Hughes
certify that this Corner Record correctly represents work performed by me or under my direction in compliance with the "Corner Recordation Act" (70-22-101, et seq., M.C.A.)

Alvah F. Hughes
Signature of Surveyor & Seal

Date: 12/12/89 Reg. No. 7322

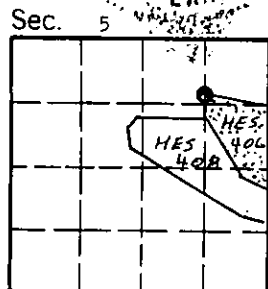
Employer: U.S. FOREST SERVICE

Office of Clerk and Recorder, County of Lincoln. This "corner record" was filed for record on Dec 19, 1989

was noted on the cross-index plat and is assigned page No. 4161, in

book No. _____

Cross Index No. 1HES406 T. 35 N R. 32 W P.M.M.



• - corner this sheet