

INSTRUCTIONS

1. Original and/or subsequent record used to evaluate the corner position.
2. Description of evidence found, note discrepancies in the record, state method of establishing lost or obliterated corners.
3. Description of monument and accessories set to perpetuate the corner position.
4. Sketch of corner, show all pertinent data which can best be shown in a sketch example, corner marking, topography ties, position of accessories, etc.
5. Certification must be signed and sealed by Land Surveyor registered in the State of Montana.
6. Fill in Cross Index & Section Diagram at bottom of sheet.

CERTIFIED CORNER RECORDATION

Corner 1 of HES 433 T. 35 N. R. 32 W. P.M.M. Lincoln County

- I. 1915, original HES record by Fred E. Thieme: "Set a small stone marked with a cross (x) under a shale stone, 24x16x4 ins., 14 ins. in the ground, marked 1 H.E.S. 433 on SE. face, and a cross (x) on top for the exact corner point, from which

A cross (x) on a lodgepole pine tree, 8 ins. dia., bears $S44^{\circ}30'W$, 14 lks. dist.

A cross (x) on a lodgepole pine tree, 8 ins. dia., bears $S44^{\circ}30'W$, 9 lks. dist.; each blazed and scribed 1 H.E.S. 433 BT.

Raise a mound of stone, 4 ft. base, 2 ft. high SE. of corner.

- II. Found a firmly set stone, 4x14 ins., 8 ins. out of ground, marked 1-HES 433 on SE face and X on top visible, from which

After a thorough search, no original bearing trees were found possible due to a conflict in original notes.

A mound of stone, bears $S50^{\circ}E$, 3.7 ft. dist.

- III. Established two new bearing trees:

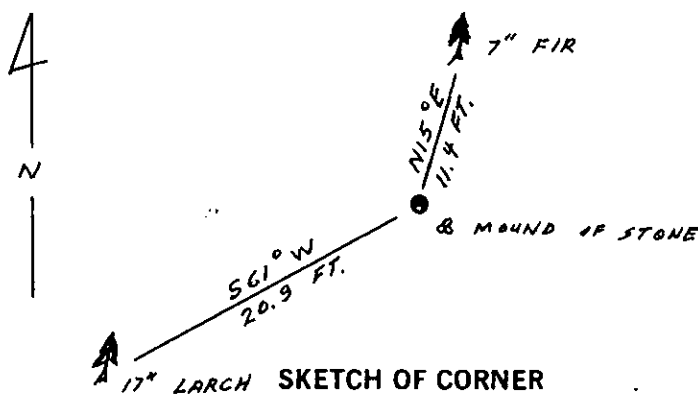
A douglas fir, 7 ins. dia., bears $N15^{\circ}E$, 11.4 ft. dist., scribed X BT.

A larch, 17 ins. dia., bears $S61^{\circ}W$, 20.9 ft. dist., scribed 1 HES 433 BT.

Painted red bands around the bearing trees and attached Land Survey Monument and Bearing Tree signs where needed.

Set a 6 ft. galvanized steel guard post with Land Survey Marker and Property Boundary decals, $N89^{\circ}E$, 3 ft.

Magnetic Declination: $20^{\circ}30'$ East



SKETCH OF CORNER

CERTIFICATION

Gary C. Crismon

I, Gary C. Crismon
certify the information shown herein is true and correct.

Gary C. Crismon
Signature Ground Party Chief

Alvah F. Hughes

I, Alvah F. Hughes
certify that this Corner Record correctly represents work performed by me or under my direction in compliance with the "Corner Recordation Act" (70-22-101, et seq., M.C.A.), B.

Alvah F. Hughes
Signature of Surveyor & Seal
Date: 12/13/89 Reg. No. 7322 L.S.
Employer: U.S. FOREST SERVICE

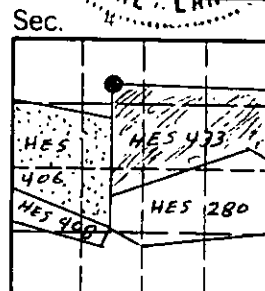
Office of Clerk and Recorder, County of Lincoln. This "corner record" was filed for record on Dec 19, 1989

was noted on the cross-index plat and is assigned page No. 4160, in.

book No. _____

Janet BF Angel by Svt. D. B. Hoff
County Official

Cross Index No. 1 HES 433 T. 35 N R. 32 W P.M.M.



• - corner this sheet