

INSTRUCTIONS

1. Original and/or subsequent record used to evaluate the corner position.
2. Description of evidence found, note discrepancies in the record, state method of establishing lost or obliterated corners.
3. Description of monument and accessories set to perpetuate the corner position.
4. Sketch of corner, show all pertinent data which can best be shown in a sketch example, corner marking, topography ties, position of accessories, etc.
5. Certification must be signed and sealed by Land Surveyor registered in the State of Montana.
6. Fill in Cross Index & Section Diagram at bottom of sheet.

CERTIFIED CORNER RECORDATION

Corner 2 of HES 406 T. 35 N. R. 32 W. P.M.M. Lincoln County

- I. 1915, original HES record by Fred E. Thieme: "Set a small stone, marked with a cross (x) under a sandstone, 24x10x5 ins. 14 ins. in the ground, marked 2 HES 406 on SW. face and a cross (x) on top for the exact corner point, from which

A cross (x) on a lodgepole pine tree, 8 ins. dia., bears $S65^{\circ}17'W$, 26 lks. dist., each blazed and scribed 2 H.E.S. 406 BT" (record indicates only one bearing tree established).

"Raise a mound of stone, 4 ft. base, 2 ft. high SW. of corner."

- II. Found a firmly set stone, 5x10 ins., 6 ins. out of the ground, marked 2 HES 406 on SW face and X on top, from which

A rotten and fallen tree, 10 ins. dia., bears $S65^{\circ}W$, 17.5 ft. (26.6 lks.) scribe unreadable.

A dead pine, 14 ins. dia., bears $N30^{\circ}W$, 32.4 ft. (49 lks.) dist., scribe 2 HES 406 BT visible (origin unknown).

A larch, 10 ins. dia., bears $S66^{\circ}E$, 18.4 ft. (27.9 lks.) dist., scribe 2 HES 406 BT visible (origin unknown).

A mound of stone, 3 1/2 ft. base by 2 ft. height, bears $S45^{\circ}W$, 3.4 ft. dist.

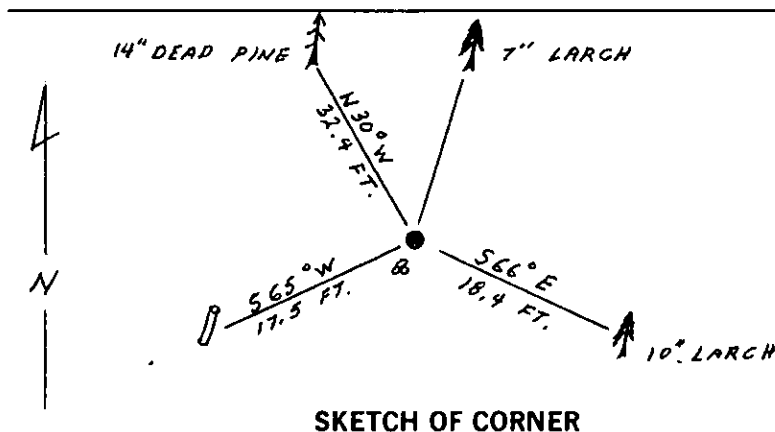
- III. Established one new bearing tree:

A larch, 7 ins. dia., bears $N16^{\circ}E$, 24.6 ft. dist., scribed X BT.

Painted red bands around the bearing trees and attached Land Survey Monument and Bearing Tree signs where needed.

Set a 6 ft. galvanized steel guard post with Land Survey Marker and Property Boundary decals, North, 3 ft.

Magnetic Declination: $20^{\circ}30'$ East



SKETCH OF CORNER

CERTIFICATION

I, Gary C. Crismon
certify the information shown herein is true and correct.

Gary C. Crismon
Signature Ground Party Chief

I, Alvah F. Hughes
certify that this Corner Record correctly represents work performed by me or under my direction in compliance with the "Corner Recordation Act" (70-22-101, et seq., M.C.A.).

Alvah F. Hughes
Signature of Surveyor

Date: 12/13/89 Reg. No. 7322-S

Employer: U.S. FOREST SERVICE

Office of Clerk and Recorder, County of Lincoln. This "corner

record" was filed for record on Dec 19, 1989

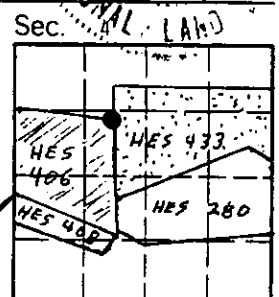
was noted on the cross-index plat and is assigned page No. 4159, in

book No. _____

Janet D. Sugilby
County Official

Cross Index No. 2 HES 406 T. 35 N R. 32 W P.M.M.

Adopted July 1, 1981, Montana Board of Professional Engineers & Land Surveyors



• - corner this sheet