

INSTRUCTIONS

1. Original and/or subsequent record used to evaluate the corner position.
2. Description of evidence found, note discrepancies in the record, state method of establishing lost or obliterated corners.
3. Description of monument and accessories set to perpetuate the corner position.
4. Sketch of corner, show all pertinent data which can best be shown in a sketch example, corner marking, topography ties, position of accessories, etc.
5. Certification must be signed and sealed by Land Surveyor registered in the State of Montana.
6. Fill in Cross Index & Section Diagram at bottom of sheet.

CERTIFIED CORNER RECORDATION

3 of HES 408
 Corner 6 of HES 406 T. 35 N., R. 32 W., P.M.M. Lincoln County

- I. 1915, original HES records by Fred E. Thieme: HES 406; "Set a small stone marked with a cross (x) under a shale stone 26x15x4 ins., 16 ins. in the ground, marked 6 H.E.S. 406 on NE. face and a cross (x) on top for the exact corner point, from which

A cross (x) on a balsam tree, 13 ins. dia., bears $S30^{\circ}10'E$, 12 lks. dist.

A cross (x) on a balsam tree, 8 ins. dia., bears $N52^{\circ}20'E$, 21 lks. dist., each blazed and scribed 6 H.E.S. 406 BT.

Raise a mound of earth, 4 ft. base, 2 ft. high, NE. of corner.

HES 408; "Identical with Cor. No. 6 of unapproved H.E.S. No. 406, a shale stone 10x15x4 ins. above ground, as set by me on July 17, 1915, I mark this stone for cor. No. 3, 3 H.E.S. 408 on SW face. Raise a mound of earth, 4 ft. base, 2 ft. high, SW. of corner." Note: Bearing Trees are same as listed above.

- II. Found a firmly set stone, 4x18 ins. 8 ins. out of ground, marked 6 HES 406 on NE face & 3 HES 408 on SW face and X mark on top, from which

A root crown, bears $S25^{\circ}E$, 8.0 ft. (12.1 lks.) dist., no visible scribe.

Evidence of the NE tree was not found as it falls in the Yaak river flood plain.

- III. Established two new bearing trees:

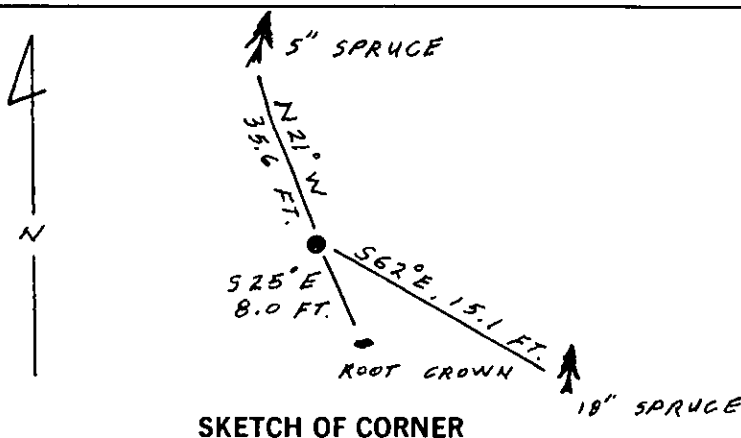
A spruce, 18 ins. dia., bears $S62^{\circ}E$, 15.1 ft. dist., scribed 6 HES 406 BT.

A spruce, 5 ins. dia., bears $N21^{\circ}W$, 35.6 ft. dist., scribed X BT.

Painted red bands around the bearing trees and attached Land Survey Monument and Bearing Tree signs where needed.

Set a 6 ft. galvanized steel guard post with Land Survey Marker and Property Boundary decals, North, 3 ft.

Magnetic declination: $20^{\circ}30'E$ East



SKETCH OF CORNER

CERTIFICATION

I, Gary C. Crismon
 certify the information shown herein is true and correct.

Gary C. Crismon
 Signature Ground Party Chief

I, Alvah F. Hughes
 certify that this Corner Record correctly represents work performed by me or under my direction in compliance with the "Corner Recordation Act" (70-22-101, et seq., M.C.A.)

Alvah F. Hughes
 Signature of Surveyor, Reg. No. 7322 LS

Date: 12/13/89 Reg. No. 7322 LS

Employer: U.S. FOREST SERVICE

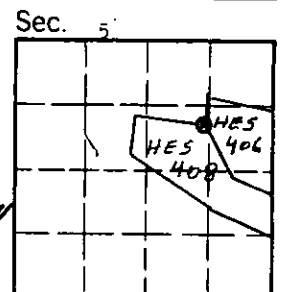
Office of Clerk and Recorder, County of Lincoln. This "corner record" was filed for record on Dec 19, 1989

was noted on the cross-index plat and is assigned page No. 4155, in

book No. _____

Janet B. Sugit by Sue Sugit
 County Official

Cross Index No. 6 HES 406 T. 35 N. R. 32 W. P.M.M.



• - corner this sheet