

INSTRUCTIONS

1. Original and/or subsequent record used to evaluate the corner position.
2. Description of evidence found, note discrepancies in the record, state method of establishing lost or obliterated corners.
3. Description of monument and accessories set to perpetuate the corner position.
4. Sketch of corner, show all pertinent data which can best be shown in a sketch example, corner marking, topography ties, position of accessories, etc.
5. Certification must be signed and sealed by Registered Land Surveyor in State of Montana.
6. Fill in Cross Index & Section Diagram at bottom of sheet.

CERTIFIED CORNER RECORDATION

Corner No. 4 H.E.S. No. 406 T. 35 N., R. 32 W., P.M.M. LINCOLN County
No. 5 H.E.S. No. 408 UNSURVEYED
No. 5 H.E.S. No. 280

1.} ORIGINAL RECORD: A Quartzite Stone, 10 X 10 X 5 ins. above ground, marked 5 HES 280 on NE face, 4 HES 406 on NW. face and 5 HES 408 on W. face, from the cross {x} on top:

a cross {x} on a Lodgepole Pine tree, 12 ins. dia. bears N. 35°40'W., 86 lks. dist.

a cross {x} on a Lodgepole Pine tree, 10 ins. dia. bears N. 10°41'E., 156 lks. dist., each blazed and scribed 4 HES 406 BT and 5 HES 408 BT

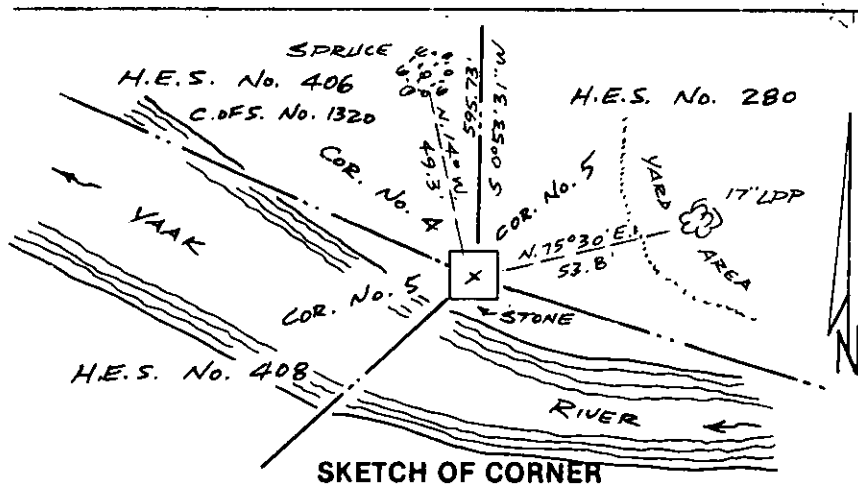
Raise mounds of earth, 4 ft. base, 2 ft. high, NW and West of corner.

2.} EVIDENCE FOUND: The Original Quartzite Stone firmly in place as described above, with no evidence of BTS.

3.} ACCESSORIES SET TO PERPETUATE CORNER: From the cross {x} on top of the Original Quartzite Stone found firmly in place, we established:

a Lodgepole Pine, 17 ins. dia., bears N. 75°30'E., 53.8 ft. dist., falls in yard area of residence, therefore not blazed or scribed.

a Spruce, with several trunks, bears N. 14°W., 49.3 ft. dist., because of numerous stems not blazed or scribed. with St. Regis Location Posters



CERTIFICATION

I, John R. Damon

certify the information shown herein is true and correct.

John R. Damon
Signature Ground Party Chief

I, Melvin D. Lauteren

certify that this Corner Record correctly represents work performed by me or under my direction in compliance with the "Corner Record Act" (70-22-101, M.C.A.)

Melvin D. Lauteren
Signature of Surveyor or Seal

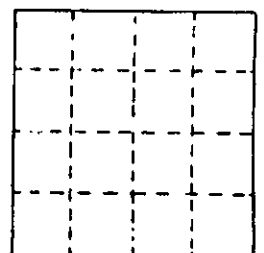
Date: 10-18-84 Reg. No. 42325

Employer: Kootenai Engineering, Inc.

Office of Clerk and Recorder, County of Lincoln. This "corner record" Sec.
 was filed for record on the 25th day of Oct 19 84, was noted on the cross-index plat and
 is assigned page No. 2765, in book No. Janet B. Hegel by Betty Conces

County Official deputy

Cross Index No. _____ T. _____ R. _____ P.M.M.



• - corner this sheet