

INSTRUCTIONS

1. Original and/or subsequent record used to evaluate the corner position.
2. Description of evidence found, note discrepancies in the record, state method of establishing lost or obliterated corners.
3. Description of monument and accessories set to perpetuate the corner position.
4. Sketch of corner, show all pertinent data which can best be shown in a sketch example, corner marking, topography ties, position of accessories, etc.
5. Certification must be signed and sealed by Registered Land Surveyor in State of Montana.
6. Fill in Cross Index & Section Diagram at bottom of sheet.

CERTIFIED CORNER RECORDATION

Corner NE PROPERTY CORNER T. 35 N., R. 32 W., P.M.M. LINCOLN County
H.E.S. NO. 406 UNSURVEYED

1. NO PREVIOUS RECORD

2. NO PREVIOUS EVIDENCE

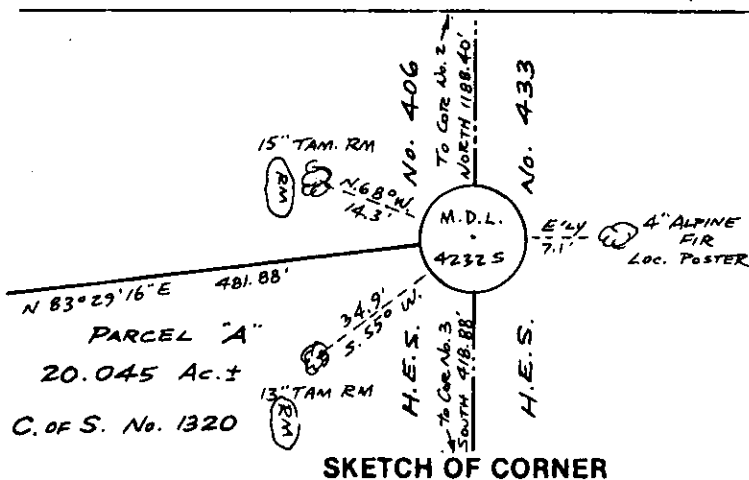
3. Set a 5/8 inch dia. X 24 inch long rebar with yellow P.V.C. Plastic Cap 1 1/4 inch dia. stamped MDL 4232S for the corner, from which:

a Tamarack, 13 ins. dia., bears S. 55°W., 34.9 ft. dist.

a Tamarack, 15 ins. dia., bears N. 68°W., 14.3 ft. dist.

each blazed and scribed: RM and painted red

an Alpine Fir, 4 ins. dia., bears Easterly, 7.1 ft. dist.
 with St. Regis Location Posters



SKETCH OF CORNER

CERTIFICATION

1. John R. Damon

certify the information shown herein is true and correct.

John R. Damon
 Signature Ground Party Chief

1. Melvin D. Lauteren

certify that this Corner Record correctly represents work performed by me or under my direction in compliance with the "Corner Recordation Act" (70-22-101, M.C.A.)

Melvin D. Lauteren
 Signature of Surveyor & Seal

Date: 10-18-84

Reg. No. 4232S

Employer: Kootenai Engineering, Inc.

Office of Clerk and Recorder, County of Lincoln. This "corner record" Sec.
 was filed for record on the 25th day of Oct 1984, was noted on the cross-index plat and
 is assigned page No. 2762, in book No. Janet B. Hoegle by Betty Conner

County Official

Deputy

Cross Index No. _____ F. _____ R. _____ PMM

• - corner this sheet