

CERTIFIED LAND CORNER RECORDATION

(REFERENCE FSH 5681.65)

DESCRIPTION OF CORNER EVIDENCE FOUND, AND ORIGINAL RECORD (IF KNOWN)

5 HES 274

Found top 10" of original wood post marked 5 HES 274 rotted off and lying on the surface. Underground remains of the post were found in place, from which a 30" larch stump with illegible scribing bears N 56° 12' E 21.1' This agrees with original field notes.

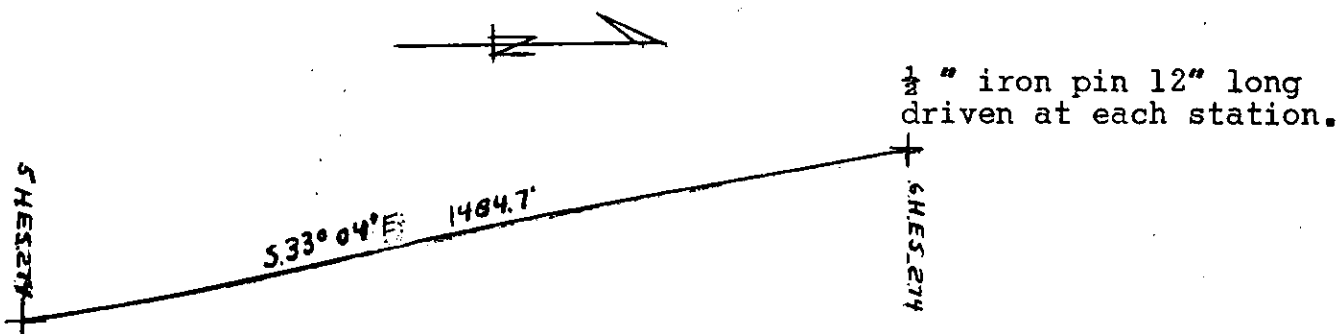
DESCRIPTION OF MONUMENT AND ACCESSORIES ESTABLISHED TO PERPETUATE THE ORIGINAL LOCATION OF THIS CORNER:

Date of work: 7/23/64

A 2" iron pipe was driven into the rotted underground remains of the wooden post. A 20" diameter by 8" deep concrete block was poured around the pipe, from which:

- 12" larch bears N 47° W 19.1' (Blazed)
- bears N 84° E 15.7' (Blazed)
- 30" larch stump bears N 56° E 21.1' (Blazed) (Illegible scribing)
- 13" pine bears S 64° E 39.0 (Blazed)

SKETCH, WITH COURSE AND DISTANCE TO ADJACENT CORNERS IF DETERMINED IN THIS SURVEY.
(MAY SKETCH OR PASTE REPRODUCTION ON REVERSE SIDE.)



Surveyor's Seal

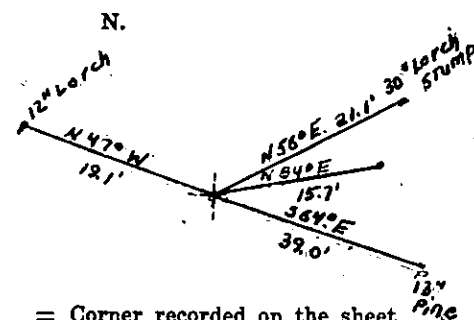
I, George Murphy
certify that the information shown herein is true and correct.

Signature of Ground Party Chief

I, E. R. Sievers
certify that I have carefully performed or reviewed the work done on the diagrammed corner as reported on this recordation form and approve the same.

Signature of Surveyor

DIAGRAM OF CORNER:



= Corner recorded on the sheet

1946 E.S.
Registration Number

Office of Clerk and Recorder, County of LINCOLN, LIBBY, MONT.

This "corner record" was filed for record on the 22nd day of September 1964, was noted on the cross-index plat and is assigned page No. 22, in book No. 1

M. M. MANSFIELD, By: Mae Watson
County Official Deputy.

Cross Index No. D-E-16 T. 35 R. 32 Mer.
Sections 1 & 2