

# CERTIFIED LAND CORNER RECORDATION

(REFERENCE FSH 5681.65)

## DESCRIPTION OF CORNER EVIDENCE FOUND, AND ORIGINAL RECORD (IF KNOWN)

7 HES 274

Found original quartzite boulder 24" x 13" x 8" with "X" on top and scribed on the side 7 HES 274 but not in place. The rock was probably disturbed by road construction. Bearing trees were not found.

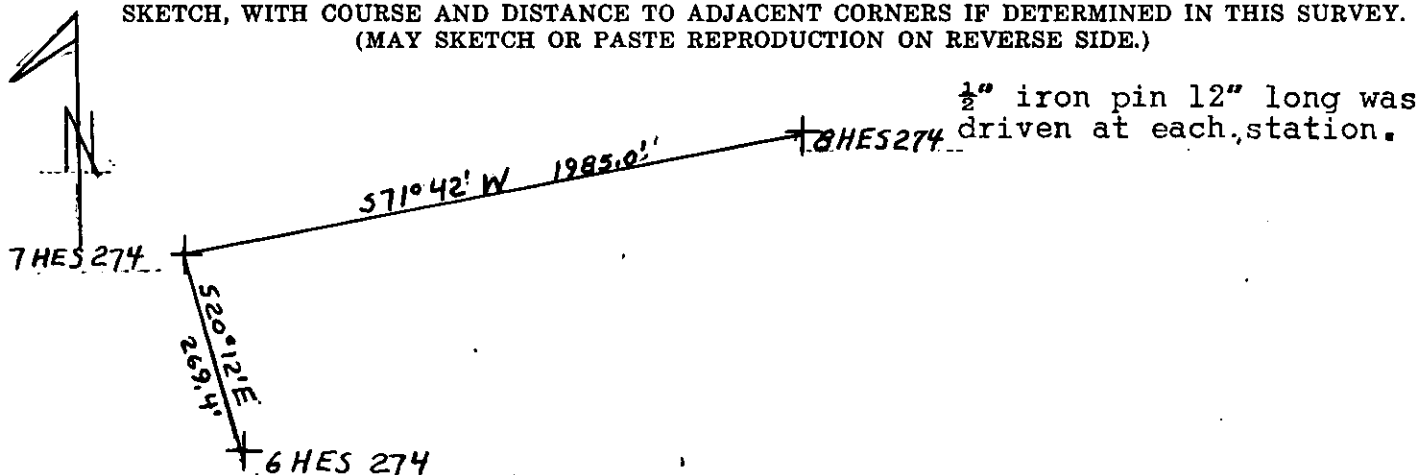
## DESCRIPTION OF MONUMENT AND ACCESSORIES ESTABLISHED TO PERPETUATE THE ORIGINAL LOCATION OF THIS CORNER:

Date of work: 8/20/64

Original quartzite boulder was replaced 14" in ground from which:

- 10" pine bears S 86 $\frac{1}{2}$ ° W 34.2' distant (Blazed)
- 12" pine bears N 29° W 34.2' distant (Blazed)
- 10" pine bears N 41° E 29.1' distant (Blazed)

## SKETCH, WITH COURSE AND DISTANCE TO ADJACENT CORNERS IF DETERMINED IN THIS SURVEY. (MAY SKETCH OR PASTE REPRODUCTION ON REVERSE SIDE.)



Surveyor's Seal

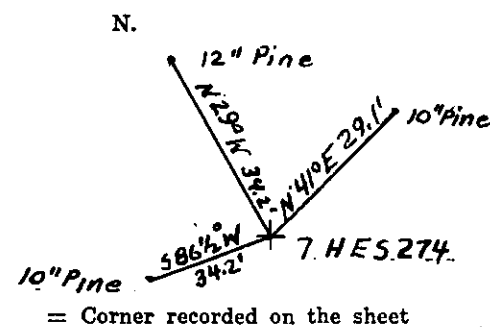
I, George Murphy  
certify that the information shown herein is true and correct.

George W. Murphy  
Signature of Ground Party Chief

I, E. R. Sievers  
certify that I have carefully performed or reviewed the work done on the diagrammed corner as reported on this recordation form and approve the same.

E. R. Sievers  
Signature of Surveyor

## DIAGRAM OF CORNER:



= Corner recorded on the sheet

1946.E.5  
Registration Number

Office of Clerk and Recorder, County of LINCOLN, LIBBY, MONTANA

This "corner record" was filed for record on the 22nd day of September 1964, was noted on the cross-index plat and is

assigned page No. 20, in book No. 1

M. M. MANSFIELD, By: Mae Watson  
County Official Deputy.

Cross Index No. C-15 T. 35 R. 32 Mer.

Sections 1 & 2