

CERTIFIED LAND CORNER RECORDATION

(REFERENCE FSH 5681.65)

DESCRIPTION OF CORNER EVIDENCE FOUND, AND ORIGINAL RECORD (IF KNOWN)

9 HES 274

Found in place quartzite boulder 12" x 8" x 10" above ground marked 9 HES 274 with "X" on top. No bearing trees in evidence. A rock mound was found 2' north of corner.

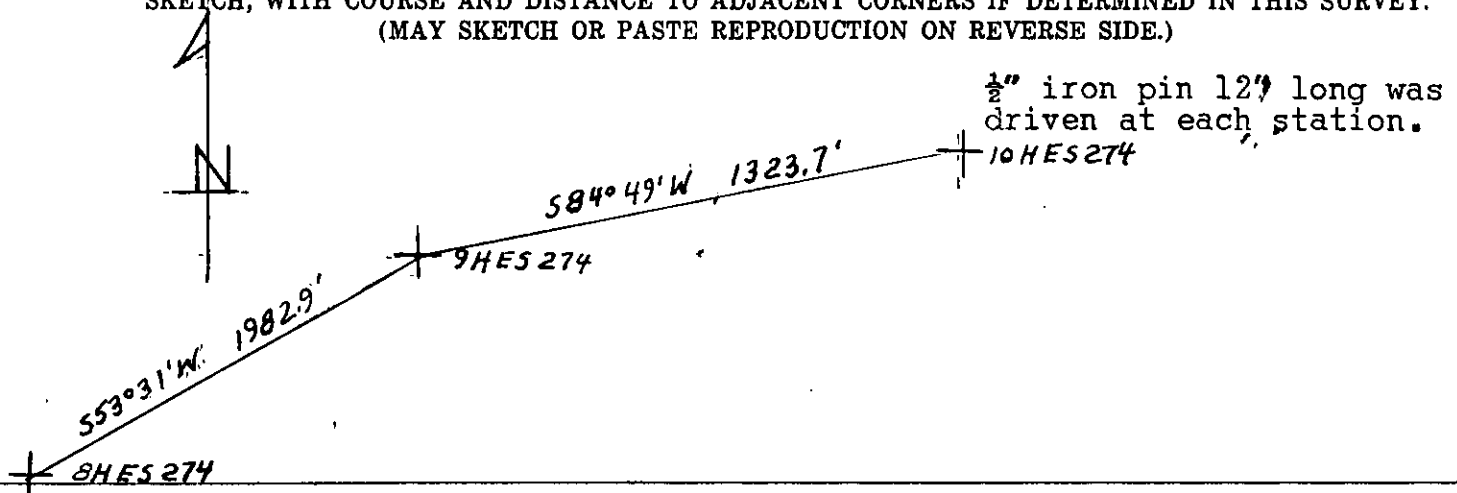
DESCRIPTION OF MONUMENT AND ACCESSORIES ESTABLISHED TO PERPETUATE THE ORIGINAL LOCATION OF THIS CORNER:

Date of work: 7/8/64

Three bearing trees were established:

- 8" lodgepole pine bears S 56 $\frac{1}{2}$ ° W 13.6' distant (Blazed)
- 6" lodgepole pine bears N 18 $\frac{1}{2}$ ° E 8.2' distant (Blazed)
- 18" fir bears S 25° E 48.4' distant (Blazed)

SKETCH, WITH COURSE AND DISTANCE TO ADJACENT CORNERS IF DETERMINED IN THIS SURVEY. (MAY SKETCH OR PASTE REPRODUCTION ON REVERSE SIDE.)



Surveyor's Seal

I, George Murphy
certify that the information shown herein is true and correct.

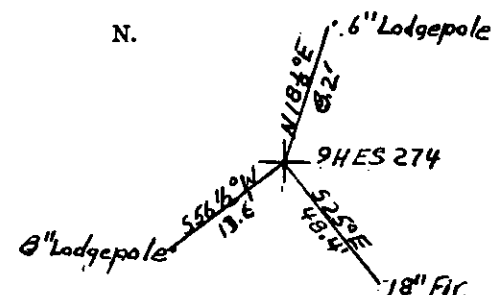
George W. Murphy
Signature of Ground Party Chief

I, E. R. Sievers
certify that I have carefully performed or reviewed the work done on the diagrammed corner as reported on this recordation form and approve the same.

E. R. Sievers
Signature of Surveyor

DIAGRAM OF CORNER:

N.



= Corner recorded on the sheet

1946 E.S.
Registration Number

Office of Clerk and Recorder, County of LINCOLN, LIBBY, MONTANA

This "corner record" was filed for record on the 22nd day of September 19 64, was noted on the cross-index plat and is

assigned page No. 18, in book No. 1

M. M. MANSFIELD, By: Mae Watson
County Official Deputy.

Cross Index No. A-20 T. 35 R. 32 Mer.
Sections 1 & 2