

INSTRUCTIONS

1. Original and/or subsequent record used to evaluate the corner position.
2. Description of evidence found, note discrepancies in the record, state method of establishing lost or obliterated corners.
3. Description of monument and accessories set to perpetuate the corner position.
4. Sketch of corner, show all pertinent data which can best be shown in a sketch example, corner marking, topography ties, position of accessories, etc.
5. Certification must be signed and sealed by Registered Land Surveyor in State of Montana.
6. Fill in Cross Index & Section Diagram at bottom of sheet.

CERTIFIED CORNER RECORDATION

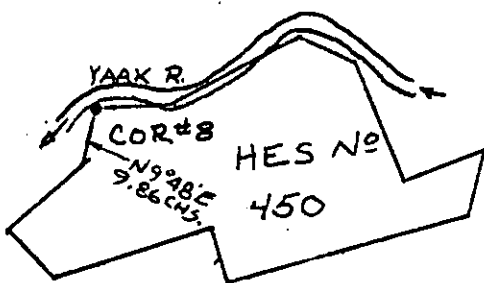
Corner No. 8 HES 450 T. 35N R. 32W P.M.M. Lincoln County

1. Record: On left bank of Yaak River. Set a small stone, marked with a cross (X) under a trap rock 26 X 7 X 5 inches. 16 inches in ground, marked 8 HES 450 on SE face and a cross (X) on top for the exact corner point, from which
A cross (X) on a lodgepole Pine tree 9 inches diameter, bears N89°00'E., 61 links distance.

A cross (X) on a Spruce tree 9 inches diameter, bears S53°06'E 90 links distance; each blazed and scribed 8 HES 450 BT.

Raise a mound of earth 4 feet base 2 feet high SE of corner.

2. Found: original stone 6" X 5" X 16" marked 8 HES 450 on SE face. No bearing trees remaining.
3. Set: from Corner No. 8 a 16" Lodgepole Pine bears S12°W 105.0 feet scribed Corner 8 HES 450 BT and posted.



Stone 6"x5"x16"
Scribed 8 HES 450 (S.E. face)
16" L.P.P.
S12°W 105.0 ft.
SKETCH OF CORNER

CERTIFICATION

I, David Stanley

certify the information shown herein is true and correct.

David Stanley
Signature of Ground Party Chief

I, Jack H. Ninneman

certify that this Corner Record correctly represents work performed by me or under my direction in compliance with the "Corner Recordation Act" (70-22-101, et seq., M.D.A.)

Jack H. Ninneman
Signature of Surveyor & Seal

Date: 5/10/82 Reg. No. 4661S

Employer: Ninneman Engineering Inc.

Office of Clerk and Recorder, County of Lincoln. This "corner record" was filed for record on the May 18th day of 1982 was noted on the cross-index plat and is assigned page No. 1653, in book No. Eleanor L. Troughby by Betty L. Conner

County Official deputy

CD-16, 17

T35N., R.32W

Sec. Unsurveyed

HES		
See sketch		
above		

9 - corner this sheet