

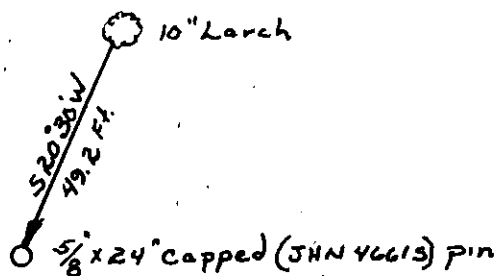
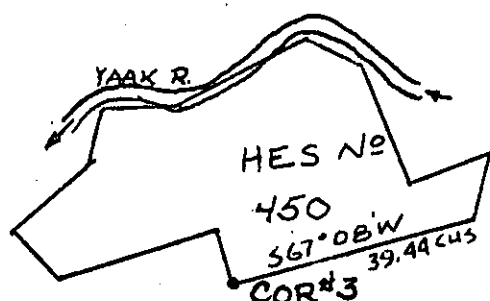
## INSTRUCTIONS

1. Original and/or subsequent record used to evaluate the corner position.
2. Description of evidence found, note discrepancies in the record, state method of establishing lost or obliterated corners.
3. Description of monument and accessories set to perpetuate the corner position.
4. Sketch of corner, show all pertinent data which can best be shown in a sketch example, corner marking, topography ties, position of accessories, etc.
5. Certification must be signed and sealed by Registered Land Surveyor in State of Montana.
6. Fill in Cross Index & Section Diagram at bottom of sheet.

## CERTIFIED CORNER RECORDATION

Corner No. 3 HES 450 T. 35N R. 32W P.M.M. Lincoln County

1. Record: a small stone marked with a cross (X) under a granite stone 24 X 16 X 12 inches 14 inches in the ground marked 3 HES on NE face.  
Raise a mound of earth 4 feet base, 2 feet high NE of corner.  
No bearing trees available and pits impracticable.
2. Found: corner and accessories destroyed.
3. Set a 5/8" by 24" capped steel pin (stamped J.H.N. 46615) from which a 10" Larch bears N20°30'E 49.2 feet scribed Corner 3 HES 450 BT. and posted



SKETCH OF CORNER

## CERTIFICATION

I, David Stanley  
certify the information shown herein is true and correct.

David Stanley  
Signature of Ground Party Chief

I, Jack H. Ninneman  
certify that this Corner Record correctly represents work performed by me or under my direction in compliance with the "Corner Recordation Act" (70-22-101, et seq., M.D.A.)

Jack H. Ninneman  
Signature of Surveyor & Seal

Date: 5/10/82 Reg. No. 46615

Employer: Ninneman Engineering, Inc.

Office of Clerk and Recorder, County of Lincoln. This "corner record" was filed for record on the May 18th day of 1982 was noted on the cross-index plat and is assigned page No. 1648, in book No. 1

Eleanor L. Hughes by Betty L. Conner  
County Official deputy

DE-17,18

Cross Index No.

T.

R. 32W P.M.M.

## Sec. Unsurveyed

HES			
See sketch above			

corner this sheet