

AMMENDED CERTIFIED CORNER RECORDATION

Corner 3 HES 450 T 35 N. R. 32 W. P.M.M. LINCOLN County

- I. Record: 1915 U.S. Forest Service record of H.E.S. 450 by Fred E. Thieme; Set for Cor. No. 3, a small stone marked with a cross (x) under a granite stone, 24x16x12 ins., 14 ins. in the ground, marked 3 HES on NE face. Raise a mound of earth 4 ft. base, 2 ft. high NE of cor. No bearings available and pits impracticable.
1982 Certificate of Survey No. 1018, by J. H. Ninnenman, Reg. No. 4661S: Set a 5/8 in diam. by 24 in. long capped steel pin marked J.H.N. 4661S.
1982 Certified Corner Recordation, by J. H. Ninnenman, Reg. No. 4661S: Found: corner and accessories destroyed. Set a 5/8" by 24" capped steel pin (stamped J.H.N. 4661S) from which a 10" Larch bears N20°30'E, 49.2 feet, scribed CORNER 3 HES 450 BT. and posted.

- II. Found a 5/8 in. diam by 24 in. long rebar with plastic cap marked J.H.N. 4661S, bent and pushed out of position, from which:

A larch, 10 ins. diam., bears N22°E, 49.2 ft. dist., with visible scribe marks.

- III. Set by survey a 5/8 in. diam. by 24 ins. long rebar, 8 ins. below the surface of the road, with a 3/4 in. diam. aluminum cap marked as shown below, from which the 2 new bearing trees:

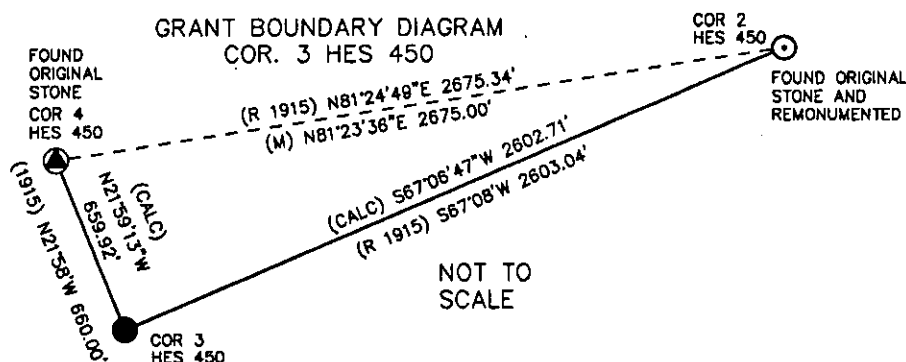
A larch, 12 ins. diam., bears S46°E, 46.1 ft. dist., marked 3 HES 450 BT.

A larch, 14 ins. diam., bears S17°W, 48.8 ft. dist., marked 3 HES 450 BT.

the J.H.N bearing tree:

A larch, 10 ins. diam., bears N14°E, 49.2 ft. dist., with visible scribe marks.

Attached Bearing Tree and Land Survey Monument signs to the bearing trees. Painted red the scribed face and a red band around the bearing tree.



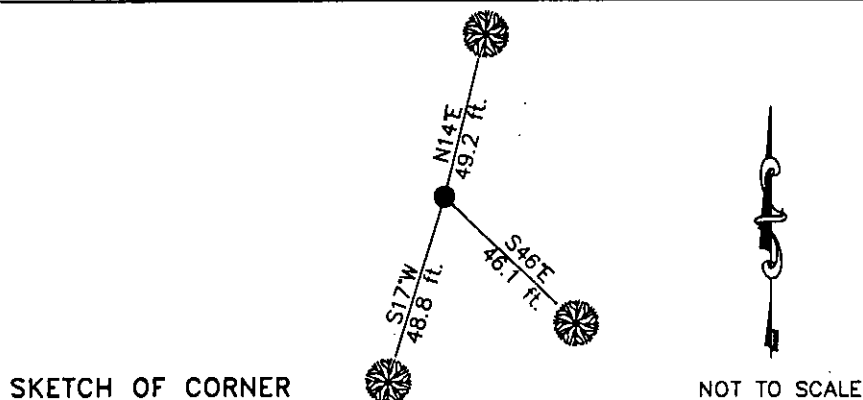
Date of Fieldwork: 6/7/2005

Survey crew: Steve Boyer, Tom Hommel

Magnetic declination: 20° East assumed

Equipment used: Hand compass and loggers tape

U.S. Forest Service, Supervisors Office, 1101 Hwy. 2 West, Libby, MT 59923 (406) 293-6211



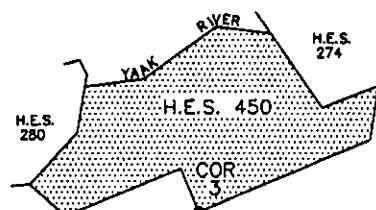
CERTIFICATION

Thomas M. Hommel 10800 LS
I, certify the information shown herein is true and correct.

Signature of Grant Party: *[Signature]*
Steven A. Boyer
I, certify that this Corner Record correctly represents work performed by me or under my direction in compliance with the "Corner Recordation Act" (20-22-101, et seq., M.C.A.)

Signature of Surveyor: *[Signature]*
Date: 1/8/2008 Reg. No. 9750LS
Employer: U. S. Forest Service

208580 BOOK: CCR CC&R'S PAGE: 11185 Pages: 1
STATE OF MONTANA LINCOLN COUNTY
RECORDED: 01/10/2008 10:20 KOI: CC&R'S
TAMMY D. LAUER CLERK AND RECORDER
FEE: \$0.00 BY: *Lise Blomdahl, Deputy*
TO: FILED



Cross Index No. 3 H.E.S. 450 T. 35N. R. 32W. P.M., MT

Adopted July 1, 1981, Montana Board of Professional Engineers & Land Surveyors

• corner this sheet