

# AMENDED CERTIFIED CORNER RECORDATION

Corner 5 HES 495  
1 HES 274 T. 35 N. R. 32 W. P.M.M. LINCOLN County

- I. Record: 1914 U.S. Forest Service record of H.E.S. 274 by Elmer R. Johnson: Set for Cor. No. 1 a quartzite stone 24x14x10 ins., 14 ins. in the ground, marked 1 HES 274 on NW face and a cross (x) on top for exact corner point, from which:

A cross (x) on a larch, 24 ins. diam., bears S79°15'W, 174 lks. dist.  
 A cross (x) on a larch, 36 ins. diam., bears S30°13'E, 35 lks. dist., each blazed and scribed 1 HES 274 BT.

Raise a mound of earth 4 ft. base, 2 ft. high NW of cor.

1915 U.S. Forest Service record of H.E.S. 495 by Fred E. Thieme: 51.02 chains. identical with Cor. Nos. 1 of accepted H.E.S. No. 274 and unapproved H.E.S. 451, a quartzite stone, 10x14x10 ins above ground, marked and witnessed as described by the surveyor general, I mark this stone for Cor. No. 5, 5 HES 495 on NE face. From the cross "x" on top

A cross (x) on a larch tree, 36 ins. diam., bears N30°10'E, 34 lks. dist.  
 A cross (x) on a larch tree, 26 ins. diam., bears S79°12'W, 34 lks. dist., each blazed and scribed 5 HES 495 BT.

Raise a mound of stone 4 ft. base, 2 ft. high NE of cor.

1959 Corner Card by B. N. Hoffman, Forestry Aid: Rock standing on end. 32" La. stump & long butt 20'. Brg. N35°E to cor. Part of the corner description on the BT is on the stump and part on the long butt.

- II. Found a stone 8x11 ins., 11 ins. above ground, firmly set, marked 1 HES 274 on NW face and 5 HES 495 on NE and a "x" on top, from which:

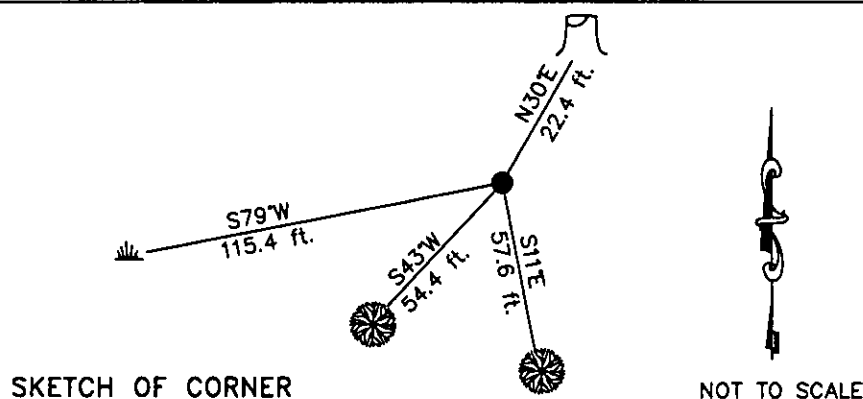
A larch stump, 36 ins. diam., bears N30°E, 22.4 ft. dist., with BT visible.  
 A root crown with rotten remains, bears S79°W, 115.4 ft. dist. with 1 HES visible on remains.

- III. Establish 2 new bearing trees:

A larch, 20 ins. diam., bears S11°E, 57.6 ft. dist., marked 5 HES 495 BT.  
 A larch, 15 ins. diam., bears S43°W, 54.4 ft. dist., marked 1 HES 274 BT.

Attached Bearing Tree and Land Survey Monument signs to the bearing trees. Painted red the scribed face and a red band around the bearing tree.

Date of Fieldwork: 6/9/2005  
 Survey crew: Steve Boyer, Tom Hommel  
 Magnetic declination: 20° East assumed  
 Equipment used: Hand compass and loggers tape  
 U.S. Forest Service, Supervisors Office, 1101 Hwy. 2 West, Libby, MT 59923 (406) 293-6211



CERTIFICATION

I, Thomas M. Hommel 10800LS  
 certify the information shown herein is true and correct.

Signature of Ground Party, Chief of Party

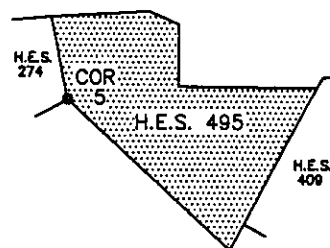
I, Steven A. Boyer  
 certify that this Corner Record correctly represents work performed by me or under my direction in compliance with the "Corner Recordation Act" (70-22-101, et seq., M.C.A.)

Signature of Surveyor & Seal

Date: 01/26/2006 Reg. No. 9750LS

Employer: U. S. Forest Service

Office of Clerk and Recorder, County of Lincoln This "corner record" was filed 192571 BOOK: CCR CC&R'S PAGE: 10925 Pages: 1  
 was noted on the STATE OF MONTANA LINCOLN COUNTY  
 book No. RECORDED: 03/16/2006 10:43 KOI: CC&R'S  
CORAL M. CUMMINGS CLERK AND RECORDER  
 FEE: \$0.00 BY: [Signature]  
 TO: FILED



5 HES 495  
 Cross Index No. 1 HES 274 T. 35 N. R. 32 W. P.M., MT