

# AMENDED CERTIFIED CORNER RECORDATION

Corner 5 HES 450 T. 35 N. R. 32 W. P.M.M. LINCOLN County

- I. 1915 U.S. Forest Service record of H.E.S. 450 by Fred E. Thieme: Set for Cor. 5, a small stone marked with a cross (x) under a quartzite 24x11x5 ins., 14 ins. in the ground, marked 5 H.E.S. 450 on N. face, and a cross (x) on top for the exact Cor. point, from which

A cross (x) on a larch tree, 11 ins. diam., bears N63°35'W, 35 lks. dist.

A cross (x) on a larch tree, 11 ins. diam., N51°31'E, 17 lks. dist., each blazed and scribed 5 HES 450 BT.

Raise a mound of earth 4 ft. base, 2 ft. high N. of cor.

1964 Corner Card by N. Fifield, Forestry Technician: Metal pipe set in concrete. Brass cap has evidently been destroyed. No bearing tree found. One short piece of wood approximately 2'x6" scribed HES 450 laying beside metal pipe.

1982 Certified Corner Recordation by J. H. Ninneman, 4661S: 1. Recites the 1915 U.S. Forest Service record of H.E.S. 450 by Fred E. Thieme. 2. Found: Original stone, 6x8x16 ins, 8 ins. marked 5 HES 450 on the West face, cross (x) on top, from which a 24" Larch stump, bears S62°30'E, 23.5 feet (posted by others) A 16" Larch, bears S61°W, 6.0 feet (posted by others) A Larch stump (scribing visible) bears N55°E 6.0 feet (posted by others)

- II. Found a stone 12x6 ins., 8 ins. above ground, firmly set, marked 5 HES 450 on the north face and a "x" on top, from which:

A larch stump, 12 ins. diam., bears N51°E, 11.2 ft. dist., marked 5 HES 450 BT.

A larch snag, 12 ins. diam., bears S54°W, 6.0 ft. dist., marked with a healed face.

A larch, 23 ins. diam., bears N63°W, 23.1 ft. dist., marked with a healed face.

- III. Establish one new bearing tree

A larch, 18 ins. diam., bears S31°W, 21.6 ft. dist., marked 5 HES 450 BT.

Attached Bearing Tree and Land Survey Monument signs to the bearing trees. Painted red the scribed face and a red band around the bearing tree.

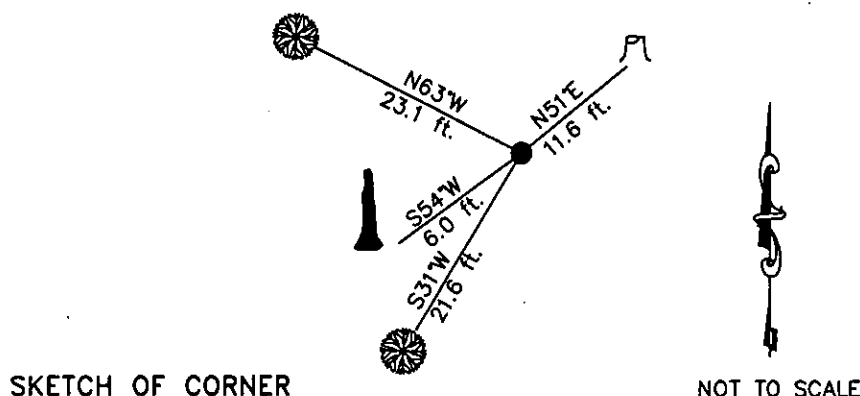
Date of Fieldwork: 6/8/2005

Survey crew: Steve Boyer, Tom Hommel

Magnetic declination: 20° East assumed

Equipment used: Hand compass and loggers tape

U.S. Forest Service, Supervisors Office, 1101 Hwy. 2 West, Libby, MT 59923 (406) 293-6211



CERTIFICATION

I, Thomas M. Hommel 10800 LS  
 certify the information shown herein is true and correct.

Signature of Ground Party Chief

Steven A. Boyer

I, Steven A. Boyer  
 certify that this Corner Record correctly represents work performed by me or under my direction in compliance with the "Corner Recordation Act" (70-28-101, et seq., M.S.A.)

Signature of Surveyor & Seal

Date: 01/26/2006 Reg. No. 9750LS

Employer: U. S. Forest Service

Office of Clerk and Recorder, County of Lincoln This "corner

record" was filed for 192569 BOOK: CCR CC&R'S PAGE: 10923 Pages: 1

was noted on the STATE OF MONTANA LINCOLN COUNTY

book No. RECORDED: 03/16/2006 10:42 KOI: CC&R'S

CORAL M. CUMMINGS CLERK AND RECORDER

FEE: \$0.00

TO: FILED

Cross Index No. 5 H.E.S. 450 T. 35N. R. 32W. P.M., MT

Adopted July 1, 1981, Montana Board of Professional Engineers & Land Surveyors

• corner this sheet

