

# AMENDED CERTIFIED CORNER RECORDATION

Corner 3 HES 280  
6 HES 450 T 35 N. R. 32 W. P.M.M. LINCOLN County

- I. Record: 1914 U.S. Forest Service record of H.E.S. 280 by Elmer R. Johnson; Set for Cor. No. 3, a black pine post 6x6x42 ins., 30 ins. in the ground, marked 3 HES 280 on NW face and a nail in top for exact corner point from which:  
 A cross (x) on a spruce, 8 ins. diam., S47°2'E, 24 lks. dist.  
 A cross (x) on a black pine, 12 ins. diam., N30°8'E, 17 lks. dist., each blazed and scribed 3 HES 280 BT.  
 Raise a mound of earth 4 ft. base, 2 ft. high NW of cor.  
 1915 U.S. Forest Service record of H.E.S. 450 by Fred E. Thieme; Cor. 6, identical with Cor. No. 3 of accepted H.E.S. No. 280, a post 14x6x6 ins. above ground, marked and witnessed as described by the surveyor general. 1 mark this post for Cor. No. 6, 6 H.E.S. 450 on E. face. From a tack in top  
 A cross (x) on a lodgepole pine tree, 12 ins. diam., N29°30'E, 17 lks. dist.  
 A cross (x) on a spruce tree, 8 ins. diam., S47°00'E, 25 lks. dist., each blazed and scribed 6 HES 450 BT.  
 Raise a mound of earth 4 ft. base, 2 ft. high E of cor.  
 1978 Certificate of Survey No. 483 by Charles N. Doyle 2516S; Sets a 5/8" rebar with plastic cap marked 2516S for corner 3 H.E.S. 280 from an original bearing tree, and ties corner 3 and 5 of H.E.S. 280.  
 1982 Certified Corner Recordation by J. H. Ninneman 4661S; 1. Quotes the above 1915 U.S. Forest Service record of H.E.S. 450 by Fred E. Thieme. 2. Found the above mentioned rebar "from which a Larch 44" diameter bears S87°W 19.0 feet an 18" Lodgepole Pine bears N31°E 12.1 feet scribed 3 HES 280 & 6 HES 450. Scribing on 44" Larch not legible. Trees not posted."  
 II. Found a 5/8 in. diam. rebar with a yellow plastic cap marked 2516S, flush with the ground, from which:  
 A down high stump spruce, bears N10°E, 35.0 ft. dist., marked 6 HES 450 BT and 3 HES 280 BT. The stump is one of the original bearing trees and has been pushed out of it's original position.  
 A larch, 39 ins. diam., bears S28°W, 18.2 ft. dist., marked with a healed face.  
 (no record) Accept the rebar as the correct position for Cor. No. 3 H.E.S. 280 and 6 H.E.S. 450 and set in it's place a 2 1/2 in diam., 30 in. long aluminum pipe, 24 ins. in the ground, with a 3 1/4 in. diam. aluminum cap marked as shown, from which:  
 The new bearing tree  
 A fir, 9 ins. diam., bears S41°W, 33.75 ft. dist., marked  
 6 HES 450 and 3 HES 280 BT.  
 Bury the Doyle rebar alongside the aluminum monument.

Attached Bearing Tree and Land Survey Monument signs to the bearing trees. Painted red the scribed face and a red band around the bearing tree.

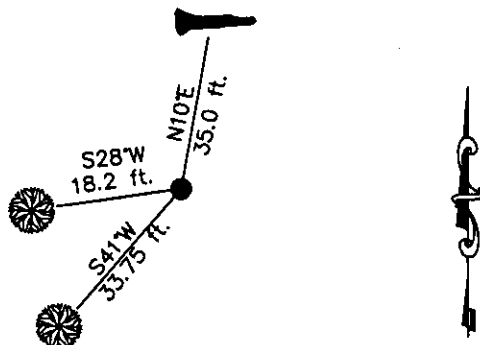
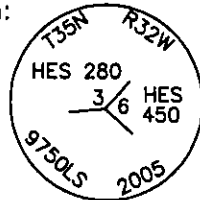
Date of Fieldwork: 6/8/2005

Survey crew: Steve Boyer, Tom Hommel

Magnetic declination: 20° East assumed

Equipment used: Hand compass and loggers tape

U.S. Forest Service, Supervisors Office, 1101 Hwy. 2 West, Libby, MT 59923 (406) 293-6211



SKETCH OF CORNER

NOT TO SCALE

## CERTIFICATION

I, Thomas M. Hommel 10800 LS  
 certify the information shown herein is true and correct.

Signature Ground Party Chief

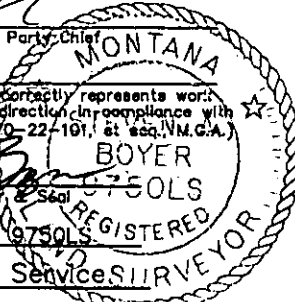
Steven A. Boyer

I certify that this Corner Record correctly represents work performed by me or under my direction in compliance with the "Corner Recordation Act" (70-22-191, et seq. M.C.A.)

Signature of Surveyor & Seal

Date: 01/26/2006 Reg. No. 9750LS

Employer: U. S. Forest Service



Office of Clerk and Recorder, County of Lincoln This "corner  
 192567 BOOK: CCR CC&R'S PAGE: 10921 Pages: 1  
 record" was filed for STATE OF MONTANA LINCOLN COUNTY  
 was noted on the cr RECORDED: 03/16/2006 10:41 KOI: CC&R'S  
 book No. CORAL M. CUMMINGS CLERK AND RECORDER  
FEE: \$0.00 BY: [Signature]  
TO: FILED

3 H.E.S. 280

Cross Index No. 6 H.E.S. 450 T. 35N. R. 32W. P.M., MT

Adopted July 1, 1981, Montana Board of Professional Engineers & Land Surveyors

• corner this sheet

