

AMENDED CERTIFIED CORNER RECORDATION

Corner 3 HES 274 T. 35 N. R. 32 W. P.M.M. LINCOLN County

- I. Record: 1914 U.S. Forest Service record of H.E.S. 274 by Elmer R. Johnson; To Cor. No. 3. Set a quartzite stone 24x12x8 ins., 14 ins. in the ground for Cor. No. 3, marked 3 HES 274 on NW face and a cross (x) on top for exact corner point, from which:

A cross (x) on a red fir, 8 ins. diam., bears S65°45'W, 50 lks. dist.
A cross (x) on a spruce, 15 ins. diam., bears N15°35'E, 42 lks. dist., each blazed and scribed 3 HES 274 BT.

Raise a mound of earth 4 ft. base, 2 ft. high NW of cor.

1964 Corner Card by N. Fifield Forestry Technician: Stone monument scribed 3 HES 274, stone approximately 10"x9"x6". 22" spruce in very poor condition. Corner stone bears S63°30'W from BT, 49 links. Cleared old fence rails and brush away from monument. Monument in good shape. Tried to chop out scribing on BT so it could be read. Found that ants had eaten away so much wood that scribing could not be made legible. Posted new BT sign with distance and bearing to corner monument.

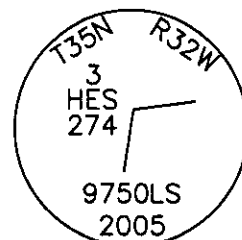
- II. Found a stone 14x6 ins., 8 ins. above ground, firmly set, marked 3 HES 274 on NW face and a "x" on top, from which:

A spruce, 29 ins. diam., bears N15°E, 27.7 ft. dist., marked with a healed face.
A fir stump 24 ins. diam., bears S66°W, 33.0 ft. dist. with a rotten face.

- III. At the position of the found stone, set a 2 1/2 in. diam. by 30 in. long aluminum pipe, 24 ins. in the ground with a 3/4 in. diam. aluminum cap marked as shown below, from which the 1 new bearing tree:

A spruce, 20 ins. diam., bears N82°E, 12.5 ft. dist., marked 3 HES 274 BT.

Attached Bearing Tree and Land Survey Monument signs to the bearing trees. Painted red the scribed face and a red band around the bearing tree.



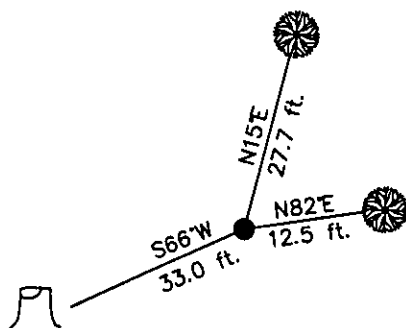
Date of Fieldwork: 6/7/2005

Survey crew: Steve Boyer, Tom Hommel

Magnetic declination: 20° East assumed

Equipment used: Hand compass and loggers tape

U.S. Forest Service, Supervisors Office, 1101 Hwy. 2 West, Libby, MT 59923 (406) 293-6211



SKETCH OF CORNER

NOT TO SCALE

CERTIFICATION

Thomas M. Hommel 10800 LS

certify the information shown herein is true and correct.

Signature of Ground Party Chief

Steven A. Boyer

certify that this Corner Record correctly represents work performed by me or under my direction in compliance with the "Corner Recordation Act" (20-22-101, et seq., M.C.A.)

Signature of Surveyor & Seal

Date: 01/26/2006 Reg. No. 9750LS

Employer: U. S. Forest Service

Office of Clerk and Recorder, County of Lincoln This "corner

record" was filed 192565 BOOK: CCR CC&R'S PAGE: 10919 Pages: 1

was noted on STATE OF MONTANA LINCOLN COUNTY

book No. RECORDED: 03/16/2006 10:39 KOI: CC&R'S

CORAL M. CUMMINGS CLERK AND RECORDER

FEE: \$0.00

BY:

TO: FILED

Cross Index No. 3 HES 274 T. 35N. R. 32W. P.M., MT

Adopted July 1, 1981, Montana Board of Professional Engineers & Land Surveyors

• corner this sheet

