

AMENDED CERTIFIED CORNER RECORDATION

Corner 2 HES 450 T. 35 N. R. 32 W. P.M.M. LINCOLN County

- I. Record: 1915 U.S. Forest Service record of H.E.S. 450 by Fred E. Thieme: Set for Cor. No. 2, a small stone marked with a cross (x) under a quartzite stone, 24x12x5 ins., 14 ins. in the ground, marked 2 HES 450 on W face, and a cross (x) on top for the exact corner point, from which:

A cross (x) on a larch tree, 26 ins. diam., bears N22°33'E, 52 lks. dist.

A cross (x) on a larch tree, 36 ins. diam., bears S73°30'W, 42 lks. dist., each blazed and scribed 2 HES 450 BT.

Raise a mound of earth and stone 4 ft. base, 2 ft. high W. of cor.

1964 Corner Card by N. Fifield, Forestry Technician: Stone monument scribed 2 HES 450 on north face. Scribed 5 HES 543 on south face. Stone broke in half at ground level.

No BT's found. Posted BT sign on 5" LPP 11.86 links from monument. Bearing is S49°E to corner stone. Cleared grass, brush and debris from monument. Corner stone is broke at ground level, could easily be moved. Placed square staff with appropriate writing beside corner stone. No BT found so made new one.

1982 Certified Corner Recordation by J. H. Ninneman 4661S: 1. Recites the 1914 U.S. Forest Service record of H.E.S. 280 by Elmer R. Johnson. 2. Found stone 8"x12"x16" scribed 2 HES 450 on N. face 5 HES 453 on South face, from which a Pine 8 inches diameter bears N49°W Not scribed, but posted on side opposite corner.

- II. Found a fractured stone, 12x3 ins., 10 ins. above ground, marked 2 HES 450 on the W. face from which:

A rotten root crown and rotten remains, bears N22°E, 34.3 ft. dist., no visible marks.

A larch stump, 36 ins. diam., bears S73°W, 27.7 ft. dist., marked with 2 visible ax marks.

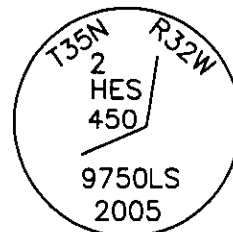
- III. Replaced the stone with a 2 1/2 in. diam. by 30 in. long aluminum pipe, 26 ins. in the ground with a 3/4 in. diam. aluminum cap marked as shown below, from which the 2 new bearing trees:

A larch, 14 ins. diam., bears N48°E, 37.1 ft. dist., marked 2 HES 450 BT.

A larch, 10 ins. diam., bears S84°W, 28.6 ft. dist., marked 2 HES 450 BT.

Bury the original stone alongside the aluminum pipe.

Attached Bearing Tree and Land Survey Monument signs to the bearing trees. Painted red the scribed face and a red band around the bearing tree.



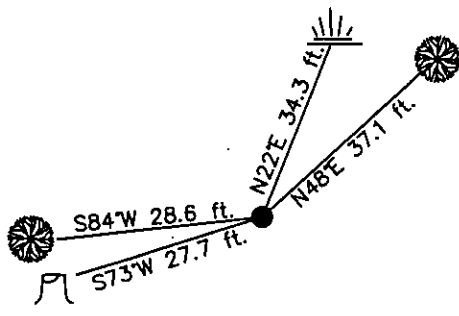
Date of Fieldwork: 6/7/2005

Survey crew: Steve Boyer, Tom Hommel

Magnetic declination: 20° East assumed

Equipment used: Hand compass and loggers tape

U.S. Forest Service, Supervisors Office, 1101 Hwy. 2 West, Libby, MT 59923 (406) 293-6211



SKETCH OF CORNER

NOT TO SCALE

CERTIFICATION

I, Thomas M. Hommel 10800 LS
certify the information shown herein is true and correct.

Signature Ground Party Chief

Steven A. Boyer

I, Steven A. Boyer
certify that this Corner Record correctly represents work performed by me or under my direction in compliance with the "Corner Recordation Act" (70-22-01, et seq. M.C.A.)

Signature of Surveyor & Seal

Date: 01/26/2006 Reg. No. 9750LS

Employer: U. S. Forest Service

Office of Clerk and Recorder, County of Lincoln This "corner

record" was filed for 192564 BOOK: CCR CC&R'S PAGE: 10918 Pages: 1

was noted on the crc STATE OF MONTANA LINCOLN COUNTY

book No. RECORDED: 03/16/2006 10:39 KOI: CC&R'S

CORAL M. CUMMINGS CLERK AND RECORDER

FEE: \$0.00

BY: [Signature]

TO: FILED

Cross Index No. 2 H.E.S. 450 T. 35N. R. 32W. P.M., MT

Adopted July 1, 1981, Montana Board of Professional Engineers & Land Surveyors

• corner this sheet

