

AMENDED CERTIFIED CORNER RECORDATION

Corner 1 HES 450
4 HES 274 T. 35 N. R. 32 W. P.M.M. LINCOLN County

I. Record: 1914 U.S. Forest Service record of H.E.S. 274 by Elmer R. Johnson: To Cor. No. 4. Set a larch post 6x6x42 ins., 30 ins. in the ground for Cor. No. 4, marked 4 HES 274 on NW face and a cross (x) on top for exact corner point, from which:
 A cross (x) on a red fir, 5 ins. diam., bears N8°15'W, 139 lks. dist.
 A cross (x) on a red fir, 5 ins. diam., bears N85°7'W, 128 lks. dist., each blazed and scribed 4 HES 274 BT.
 Raise a mound of earth and 4 ft. base, 2 ft. high NW. of cor.

1915 U.S. Forest Service record of H.E.S. 450 by Fred E. Thieme: Beginning at Cor. No. 1 of this survey, identical with Cor. No. 4 of accepted H.E.S. 274, a wooden post 12x5x5 ins. above ground, marked and witnessed as described by the Surveyor General. I mark this post for Cor. No. 1, 1 HES 450 on SW. face. From a nail in top:
 A cross (x) on a lodgepole pine tree, 4 ins. diam., bears N11°33'W, 139 lks. dist.
 A cross (x) on a lodgepole pine tree, 4 ins. diam., bears N85°45'W, 128 lks. dist., each blazed and scribed 1 HES 450 BT.
 Raise a mound of earth and 4 ft. base, 2 ft. high SW. of cor.

1915 U.S. Forest Service record of H.E.S. 451 by Fred E. Thieme: 11.66 chains. Intersect Cor. No. 4 of accepted H.E.S. No. 274 and Cor. No. 1 of unapproved H.E.S. No. 450, a post 12x5x5 ins. above ground, marked and witnessed as described by the Surveyor General.

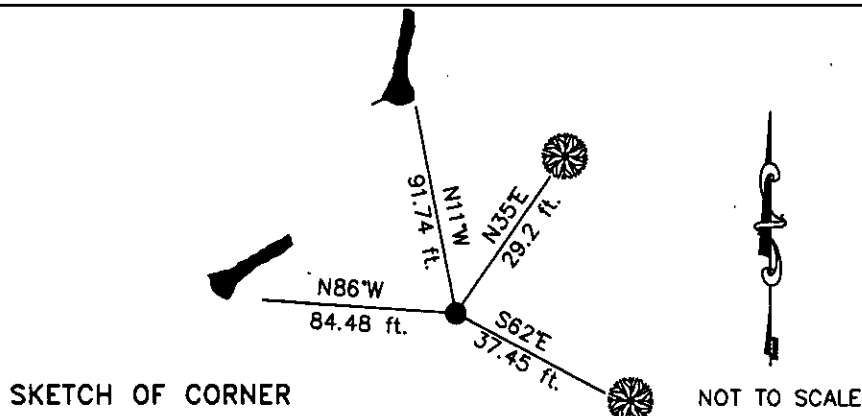
1964 Corner Card by N. Fifield, Forestry Technician: Probable cornerstone, no scribing.
 1. Green LPP approximately 10" DBH. scribed HES 274 BT
 2. Dead LLP approximately 8" DBH scribed HES 450 BT
 3. Dead LPP approximately 6" DBH scribed HES 274 BT

Not positive that this is corner monument. Have to check notes (no scribing). Lines run from corner #3 and corner #5 cross on this stone, no other stones in this area. Cleared grass and debris from around stone, put up staff with appropriate writing. Chopped out bearing trees so scribing could be read. Two of the bearing trees are dead and in poor condition. Posted 3 BT signs without distances and bearings.

1982 Certified Corner Recordation by J. H. Ninneman, Reg. No. 4661S: 1. Record: Recites the record for 1915 U.S. Forest Service record of H.E.S. 450 by Fred E. Thieme. 2. Found: A stone 6"x 6"x 8" with a scribed (x) on top no BTs or stone mounds. 3. Set: after verifying the location of this stone to be correct. A 14" larch bears S42°W 44.8 feet scribed corner 1 HES 450 BT posted.

Survey crew: Steve Boyer, Tom Hommel
 Magnetic declination: 20° East assumed
 Equipment used: Hand compass and loggers tape
 U.S. Forest Service, Supervisors Office, 1101 Hwy. 2 West, Libby, MT 59923 (406) 293-6211

Page 1 of 2



SKETCH OF CORNER

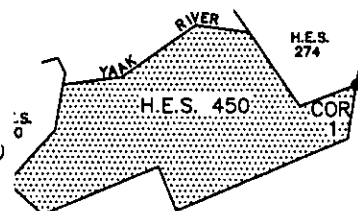
CERTIFICATION
 I, Thomas M. Hommel 10800 LS
 certify the information shown herein is true and correct.
 Signature Ground Party Chief: [Signature]
 I, Steven A. Boyer
 certify that this Corner Record correctly represents the work performed by me or under my direction in compliance with the "Corner Recordation Act," 20-22-101, et seq., M.C.A.
 Signature of Surveyor & Seal: [Signature]
 Date: 01/28/2006 Reg. No. 9750LS
 Employer: U. S. Forest Service

Office of Clerk and Recorder, County of Lincoln This "corner record" was filed for rec 192563 BOOK: CCR CC&R'S PAGE: 10917 Pages: 2
 STATE OF MONTANA LINCOLN COUNTY
 was noted on the cross RECORDED: 03/16/2006 10:38 KOI: CC&R'S
 book No. CORAL M. CUMMINGS CLERK AND RECORDER
 FEE: \$0.00 BY: [Signature]
 TO: FILED

1 HES 450
 Cross Index No. 4 HES 274 T. 35N. R. 32W. P.M., MT

Adopted July 1, 1981, Montana Board of Professional Engineers & Land Surveyors

• corner this sheet



AMENDED CERTIFIED CORNER RECORDATION

Corner 1 HES 450
4 HES 274 T. 35 N. R. 32 W. P.M.M. LINCOLN County

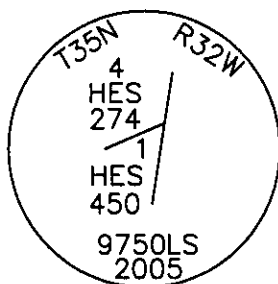
II. Found: The above mentioned stone, 6x6x8 ins., loosley set with no visible markings. There is no record for the origin of this stone and all previous original surveys call for a wood post.

A pine snag 14 ins. diam., bears N11°W, 91.74 ft. dist. marked 4 HES 274 BT.
 A down pine, 6 ins. diam., bears N86°W, 84.48 ft. dist., marked 4 HES 274 BT.

III. Since the stone is not an original monument and there is no record of its origin I set by record distance-distance intersection from the found original bearing trees, a 2 1/2 in. diam. by 30 in. long aluminum pipe, 26 ins. in the ground with a 3/4 in. diam. aluminum cap marked as shown below, from which the 2 new bearing trees:

A larch, 9 ins. diam., bears N35°E, 29.2 ft. dist., marked 4 HES 274 BT.
 A spruce, 14 ins. diam., bears S62°E, 37.45 ft. dist., marked 1 HES 450 BT.

Attached Bearing Tree and Land Survey Monument signs to the bearing trees. Painted red the scribed face and a red band around the bearing tree.



Date of Fieldwork: 6/7/2005

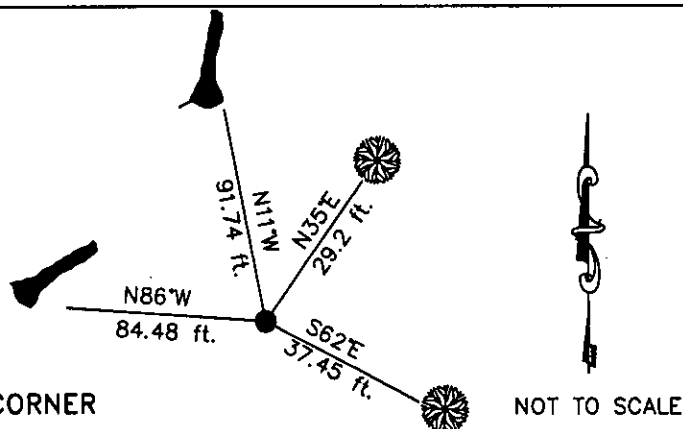
Survey crew: Steve Boyer, Tom Hommel

Magnetic declination: 20° East assumed

Equipment used: Hand compass and loggers tape

Page 2 of 2

U.S. Forest Service, Supervisors Office, 1101 Hwy. 2 West, Libby, MT 59923 (406) 293-6211



SKETCH OF CORNER

NOT TO SCALE

CERTIFICATION

I, Thomas M. Hommel 10800 LS
 certify the information shown herein is true and correct.

Signature Ground Party Chief

Steven A. Boyer

I, Steven A. Boyer
 certify that this Corner Record correctly represents work performed by me or under my direction in compliance with the "Corner Recordation Act" (78-22-101, et seq., M.C.A.)

Signature of Surveyor & Seal

Date: 01/28/2006 Reg. No. 9750LS

Employer: U. S. Forest Service

Office of Clerk and Recorder, County of Lincoln This "corner

record" was filed for record on _____

was noted on the cross-index plat and is assigned page No. _____, in

book No. _____

County Official

1 HES 450

Cross Index No. 4 HES 274 T. 35N. R. 32W. P.M., MT

Adopted July 1, 1981, Montana Board of Professional Engineers & Land Surveyors

• corner this sheet

