

CERTIFIED CORNER RECORDATION

Corner 4 HES 274
1 HES 450 T. 35 N. R. 32 W. P.M.M. LINCOLN County

- I. Record: 1914 U.S. Forest Service record of H.E.S. 274 by Elmer R. Johnson: 14.24 chains.
To Cor. No. 4. Set a larch post 6x6x42 ins., 30 ins. in the ground for Cor. No. 4, marked
4 HES 274 on NW face and a cross (x) on top for exact corner point, from which
A cross (x) on a red fir, 5 ins. diam., bears N8°15'W, 139 lks. dist.
A cross (x) on a red fir, 5 ins. diam., bears N85°7'W, 128 lks. dist., each
blazed and scribed 4 HES 274 BT.
Raise a mound of earth and 4 ft. base, 2 ft. high NW of cor.

1915 U.S. Forest Service record of H.E.S. 450 by Fred E. Thieme: Beginning at cor. No. 1
of this survey, identical with Cor. No. 4 of accepted H.E.S. 274, a wooden post 12x5x5 ins.
above ground, marked and witnessed as described by the Surveyor General. I mark this
post for Cor. No. 1, 1 HES 450 on SW face. From a nail in top:
A cross (x) on a lodgepole pine tree, 4 ins. diam., bears N11°33'W, 139 lks. dist.
A cross (x) on a lodgepole pine tree, 4 ins. diam., bears N85°45'W, 128 lks. dist.,
each blazed and scribed 1 HES 450 BT.
Raise a mound of earth and 4 ft. base, 2 ft. high SW. of cor.

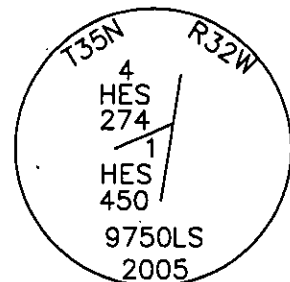
II. Found:

A pine snag 14 ins. diam., bears N11°W, 91.74 ft. dist. marked 4 HES 274 BT.
A down pine, 6 ins. diam., bears N86°W, 84.48 ft. dist., marked 4 HES 274 BT.

- III. Set by distance-distance intersection from the found original bearing trees, a 2 1/2 in.
diam. by 30 in. long aluminum pipe, 26 ins. in the ground with a 3/4 in. diam. aluminum
cap marked as shown below, from which the 2 new bearing trees:

A larch, 9 ins. diam., bears N35°E, 29.2 ft. dist., marked 4 HES 274 BT.
A spruce, 14 ins. diam., bears S62°E, 37.45 ft. dist., marked 1 HES 450 BT.

Attached Bearing Tree and Land Survey Monument signs to the bearing trees. Painted red
the scribed face and a red band around the bearing tree.



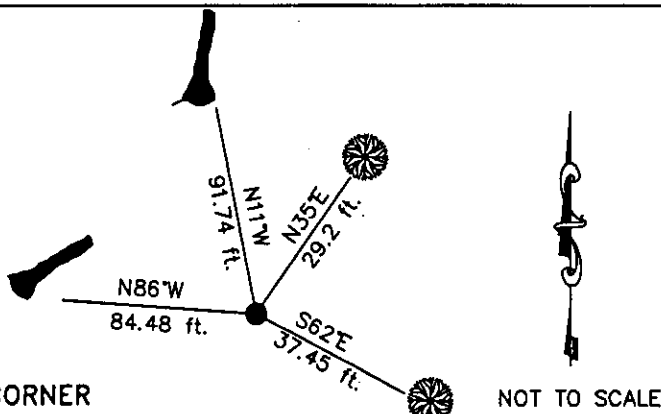
Date of Fieldwork: 6/7/2005

Survey crew: Steve Boyer, Tom Hommel

Magnetic declination: 20° East assumed

Equipment used: Hand compass and loggers tape

U.S. Forest Service, Supervisors Office, 1101 Hwy. 2 West, Libby, MT 59923 (406) 293-6211



SKETCH OF CORNER

CERTIFICATION

I, Thomas M. Hommel 10800LS
certify the information shown herein is true and correct.

Thomas M. Hommel
Signature Ground Party Chief

I, Steven A. Boyer
certify that this Corner Record correctly represents work
performed by me or under my direction in compliance with
the "Corner Recordation Act" (90-22-101, et seq., M.C.A.)

Steven A. Boyer
Signature of Surveyor & Seal

Date: 06/7/2005 Reg. No. 9750LS

Employer: U. S. Forest Service

Office of Clerk and Recorder, County of Lincoln This "corner

record" was 189427 BOOK: CCR CC&R'S PAGE: 10881 Pages: 1

was noted at STATE OF MONTANA LINCOLN COUNTY

RECORDED: 11/07/2005 12:13 KOI: CC&R'S

book No. CORAL M. CUMMINGS CLERK AND RECORDER

FEE: \$0.00

BY: Debbie Dennis

TO: FILED

4 HES 274

Cross Index No. 1 HES 450 T. 35N. R. 32W. P.M., MT

Adopted July 1, 1981, Montana Board of Professional Engineers & Land Surveyors

• corner this sheet

