

CERTIFIED CORNER RECORDATION

Corner 2 HES 274 T 35 N. R. 32 W. P.M.M. LINCOLN County

- I. Record: 1914 U.S. Forest Service record of H.E.S. 274 by Elmer R. Johnson: To Cor. No. 2. Set for Cor. No. 2, a larch post, 6x6x42 ins., 30 ins. in the ground, marked 2 HES 274 on NW face and a nail in top for exact corner point, from which:

A cross (x) on a larch, 10 ins. diam., bears N3°40'E, 17 lks. dist.  
A cross (x) on a larch, 30 ins. diam., bears S1°30'W, 98 lks. dist., each blazed and scribed 2 HES 274 BT.

Raise a mound of earth 4 ft. base, 2 ft. high NW of cor.

- II. Found the verticle rotten remains of a wood post in a 6 in. diam. hole. The rotten remains extended to 30 ins. below the surface of the ground, from which:

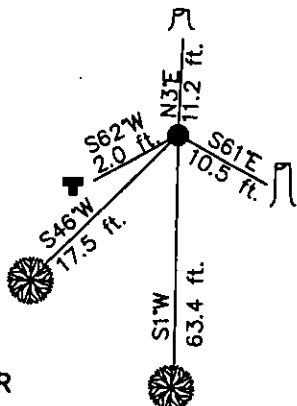
A larch stump, 10 ins. diam., bears N3°E, 11.2 ft. dist., marked with visible ax marks.  
A pine high stump, 12 ins. diam., bears S61°E, 10.5 ft. dist. marked 2 HES 274 BT.  
A larch, 47 ins. diam., bears S1°W, 63.4 ft. dist. marked with a healed face and ax marks.  
A larch, 12 ins. diam., bears S46°W, 17.5 ft. dist. marked with a healed face.  
A "T" bar, bears S62°W, 2.0 ft. dist.

- III. At the position of the found original corner evidence, set a 2 1/2 in. diam. by 30 in. long aluminum pipe, 3 ins. below the surface of the ground with a 3/4 in. diam. aluminum cap marked as shown below.

Attached Bearing Tree and Land Survey Monument signs to the bearing trees. Painted red the scribed face and a red band around the bearing tree.



Date of Fieldwork: 6/9/2005  
Survey crew: Steve Boyer, Tom Hommel  
Magnetic declination: 20° East assumed  
Equipment used: Hand compass and loggers tape  
U.S. Forest Service, Supervisors Office, 1101 Hwy. 2 West, Libby, MT 59923 (406) 293-6211



SKETCH OF CORNER

NOT TO SCALE

CERTIFICATION  
I, Thomas M. Hommel 10800 LS  
certify the information shown herein is true and correct.  
Signature Ground Party Chief  
I, Steven A. Boyer  
certify that this Corner Record correctly represents work performed by me or under my direction in compliance with the "Corner Recordation Act" (78-22-301, M.C.A.)  
Signature of Surveyor & Seal  
Date: 06/9/2005 Reg. No. 9750LS  
Employer: U. S. Forest Service

Office of Clerk and Recorder, County of Lincoln This "corner

record" was file: 189426 BOOK: CCR CC&R'S PAGE: 10880 Pages: 1  
was noted on t: STATE OF MONTANA LINCOLN COUNTY  
book No. RECORDED: 11/07/2005 12:12 KOI: CC&R'S  
CORAL M. CUMMINGS CLERK AND RECORDER  
FEE: \$0.00 BY: Heather D. Davis  
TO: FILED

Cross Index No. 2 HES 274 T. 35N. R. 32W. P.M., MT

Adopted July 1, 1981, Montana Board of Professional Engineers & Land Surveyors

• corner this sheet

