

# CERTIFIED CORNER RECORDATION

Corner 2 HES 450 T. 35 N. R. 32 W. P.M.M. LINCOLN County

- I. Record: 1914 U.S. Forest Service record of H.E.S. 280 by Elmer R. Johnson: Set for Cor. No. 2, a small stone marked with a cross (x) under a quartzite stone, 24x12x5 ins., 14 ins. in the ground, marked 2 HES on W face, and a cross (x) on top for the exact corner point, from which:

A cross (x) on a larch tree, 26 ins. diam., bears N22°33'E, 52 lks. dist.

A cross (x) on a larch tree, 36 ins. diam., bears S73°30'W, 42 lks. dist., each blazed and scribed 2 HES 450 BT.

Raise a mound of earth and stone 4 ft. base, 2 ft. high W. of cor.

- II. Found a fractured stone, 12x3 ins., 10 ins above ground, marked 2 HES 450 on the W. face from which:

A rotten root crown and rotten remains, bears N22°E, 34.3 ft. dist., no visible marks.

A larch stump, 36 ins. diam., bears S73°W, 27.7 ft. dist., marked with 2 visible ax marks.

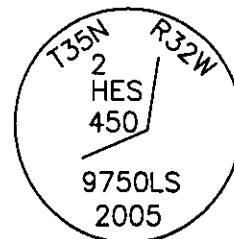
- III. Replaced the stone with a 2 1/2 in. diam. by 30 in. long aluminum pipe, 26 ins. in the ground with a 3/4 in. diam. aluminum cap marked as shown below, from which the 2 new bearing trees:

A larch, 14 ins. diam., bears N48°E, 37.1 ft. dist., marked 2 HES 450 BT.

A larch, 10 ins. diam., bears S84°W, 28.6 ft. dist., marked 2 HES 450 BT.

Bury the original stone alongside the aluminum pipe.

Attached Bearing Tree and Land Survey Monument signs to the bearing trees. Painted red the scribed face and a red band around the bearing tree.



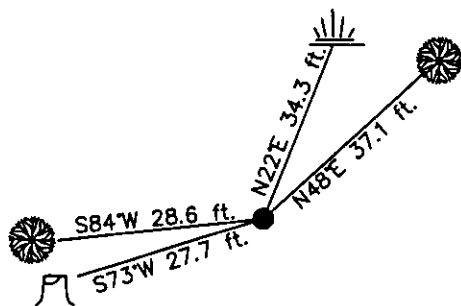
Date of Fieldwork: 6/7/2005

Survey crew: Steve Boyer, Tom Hommel

Magnetic declination: 20° East assumed

Equipment used: Hand compass and loggers tape

U.S. Forest Service, Supervisors Office, 1101 Hwy. 2 West, Libby, MT 59923 (406) 293-6211



SKETCH OF CORNER

NOT TO SCALE

## CERTIFICATION

I, Thomas M. Hommel 10800 LS  
certify the information shown herein is true and correct.

Signature of Ground Party Chief

Steven A. Boyer

I certify that this Corner Record correctly represents work performed by me or under my direction in compliance with the "Corner Recordation Act" (70-22-101, et seq., M.C.A.)

Signature of Surveyor & Seal

Date: 06/7/2005 Reg. No. 9750LS

Employer: U. S. Forest Service

Office of Clerk and Recorder, County of Lincoln This "corner

record" was from 189425 BOOK: CCR CC&R'S PAGE: 10879 Pages: 1

was noted or STATE OF MONTANA LINCOLN COUNTY

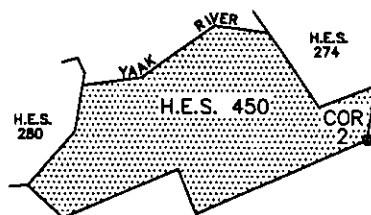
RECORDED: 11/07/2005 12:11 KOI: CC&R'S

book No. CORAL M. CUMMINGS CLERK AND RECORDER

FEE: \$0.00

BY: [Signature]

TO: FILED



Cross Index No. 2 H.E.S. 450 T. 35N. R. 32W. P.M., MT

Adopted July 1, 1981, Montana Board of Professional Engineers & Land Surveyors

• corner this sheet