

CERTIFIED CORNER RECORDATION

Corner 3 HES 274 T. 35 N. R. 32 W. P.M.M. LINCOLN County

- I. Record: 1914 U.S. Forest Service record of H.E.S. 274 by Elmer R. Johnson; To Cor. No. 3. Set a quartzite stone 24x12x8 ins., 14 ins. in the ground for Cor. No. 3, marked 3 HES 274 on NW face and a cross (x) on top for exact corner point, from which:

A cross (x) on a red fir, 8 ins. diam., bears S65°45'W, 50 lks. dist.
A cross (x) on a spruce, 15 ins. diam., bears N15°35'E, 42 lks. dist., each blazed and scribed 3 HES 274 BT.

Raise a mound of earth 4 ft. base, 2 ft. high NW of cor.

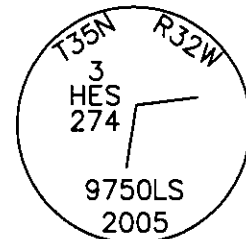
- II. Found a stone 14x6 ins., 8 ins. above ground, firmly set, marked 3 HES 274 on NW face and a "x" on top, from which:

A spruce, 29 ins. diam., bears N15°E, 27.7 ft. dist., marked with a healed face.
A fir stump 24 ins. diam., bears S66°W, 33.0 ft. dist. with a rotten face.

- III. At the position of the found stone, set a 2 1/2 in. diam. by 30 in. long aluminum pipe, 24 ins. in the ground with a 3/4 in. diam. aluminum cap marked as shown below, from which the 1 new bearing tree:

A spruce, 20 ins. diam., bears N82°E, 12.5 ft. dist., marked 3 HES 274 BT.

Attached Bearing Tree and Land Survey Monument signs to the bearing trees. Painted red the scribed face and a red band around the bearing tree.



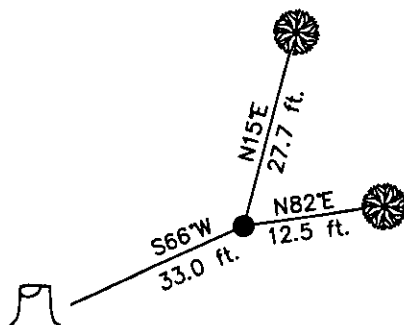
Date of Fieldwork: 6/7/2005

Survey crew: Steve Boyer, Tom Hommel

Magnetic declination: 20° East assumed

Equipment used: Hand compass and loggers tape

U.S. Forest Service, Supervisors Office, 1101 Hwy. 2 West, Libby, MT 59923 (406) 293-6211



SKETCH OF CORNER

NOT TO SCALE

CERTIFICATION

I, Thomas M. Hommel 10800 LS
certify the information shown herein is true and correct.

Signature Ground Party Chief

Steven A. Boyer

I certify that this Corner Record correctly represents work performed by me or under my direction in compliance with the "Corner Recordation Act" (70-22-101, as seq., M.C.A.)

Signature of Surveyor & Seal

Date: 06/7/2005 Reg. No. 9750LS 9750LS

Employer: U. S. Forest Service

Office of Clerk and Recorder, County of Lincoln This "corner

record" was filed for record on

189424 BOOK: CCR CC&R'S PAGE: 10878 Pages: 1

was noted STATE OF MONTANA LINCOLN COUNTY in

book No. RECORDED: 11/07/2005 12:10 KOI: CC&R'S

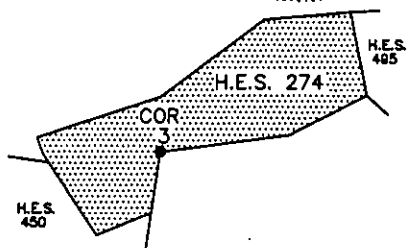
- CORAL M. CUMMINGS CLERK AND RECORDER

FEE: \$0.00

TO: FILED

BY

Tommy Dennis Deputy



Cross Index No. 3 HES 274 T. 35N. R. 32W. P.M., MT

Adopted July 1, 1981, Montana Board of Professional Engineers & Land Surveyors

• corner this sheet