

# CERTIFIED CORNER RECORDATION

Corner 6 HES 450  
3 HES 280 T 35 N. R. 32 W. P.M.M. LINCOLN County

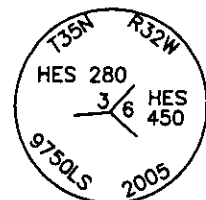
- I. Record: 1914 U.S. Forest Service record of H.E.S. 280 by Elmer R. Johnson; Set for Cor. No. 3, a black pine post 6x6x42 ins., 30 ins. in the ground, marked 3 HES 280 on NW face and a nail in top for exact corner point from which:  
 A cross (x) on a spruce, 8 ins. diam., S47°2'E, 24 lks. dist.  
 A cross (x) on a black pine, 12 ins. diam., N30°8'E, 17 lks. dist., each blazed and scribed 3 HES 280 BT.  
 Raise a mound of earth 4 ft. base, 2 ft. high NW of cor.

1915 U.S. Forest Service record of H.E.S. 450 by Fred E. Thieme; Cor. 6, identical with Cor. No. 3 of accepted H.E.S. No. 280, a post 14x6x6 ins. above ground, marked and witnessed as described by the surveyor general. I mark this post for Cor. No. 6, 6 H.E.S. 450 on E. face. From a tack in top  
 A cross (x) on a lodgepole pine tree, 12 ins. diam., N29°30'E, 17 lks. dist.  
 A cross (x) on a spruce tree, 8 ins. diam., S47°00'E, 25 lks. dist., each blazed and scribed 6 HES 450 BT.  
 Raise a mound of earth 4 ft. base, 2 ft. high E of cor.

1978 Certificate of Survey No. 483 by Charles N. Doyle 2516S; Sets a 5/8" rebar with plastic cap marked 2516S for corner 3 H.E.S. 280 from an original bearing tree, and ties corner 3 and 5 of H.E.S. 280.

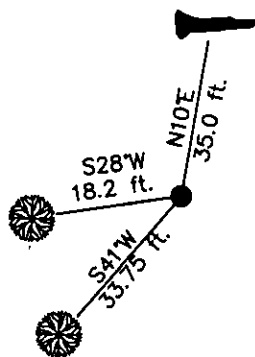
- II. Found a 5/8 in. diam. rebar with a yellow plastic cap marked 2516S, flush with the ground, from which:  
 A down high stump spruce, bears N10°E, 35.0 ft. dist., marked 6 HES 450 BT and 3 HES 280 BT. The stump is one of the original bearing trees and has been pushed out of it's original position.  
 A larch, 39 ins. diam., bears S28°W, 18.2 ft. dist., marked with a healed face.  
 (no record)
- III. Accept the rebar as the correct position for Cor. No. 3 H.E.S. 280 and 6 H.E.S. 450 and set in it's place a 2 1/2 in diam., 30 in. long aluminum pipe, 24 ins. in the ground, with a 3 1/4 in. diam. aluminum cap marked as shown, from which:

The new bearing tree  
 A fir, 9 ins. diam., bears S41°W, 33.75 ft. dist., marked  
 6 HES 450 and 3 HES 280 BT.  
 Bury the Doyle rebar alongside the aluminum monument.



Attached Bearing Tree and Land Survey Monument signs to the bearing trees. Painted red the scribed face and a red band around the bearing tree.

Date of Fieldwork: 6/8/2005  
 Survey crew: Steve Boyer, Tom Hommel  
 Magnetic declination: 20' East assumed  
 Equipment used: Hand compass and loggers tape  
 U.S. Forest Service, Supervisors Office, 1101 Hwy. 2 West, Libby, MT 59923 (406) 293-6211

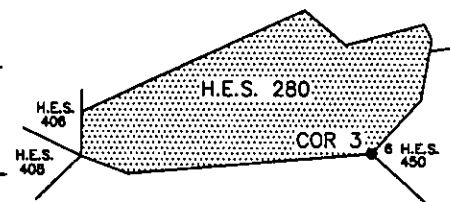


SKETCH OF CORNER

NOT TO SCALE

CERTIFICATION  
 I, Thomas M. Hommel 10800 LS  
 certify the information shown herein is true and correct.  
 Signature Ground Party Chief  
Steven A. Boyer  
 I, Steven A. Boyer  
 certify that this Corner Record correctly represents work performed by me or under my direction in compliance with the "Corner Recordation Act" (70-22-104, et seq., M.C.A.)  
 Signature of Surveyor & Seal  
 Date: 06/8/2005 Reg. No. 9750LS  
 Employer: U. S. Forest Service

Office of Clerk and Recorder, County of Lincoln This "corner record" was: 189423 BOOK: CCR CC&R'S PAGE: 10877 Pages: 1  
 was noted or STATE OF MONTANA LINCOLN COUNTY  
 book No. RECORDED: 11/07/2005 12:09 KOI: CC&R'S  
CORAL M. CUMMINGS CLERK AND RECORDER  
 FEE: \$0.00 BY: Leanne Lerner  
 TO: FILED



6 H.E.S. 450  
 Cross Index No. 3 H.E.S. 280 T 35N. R. 32W. P.M., MT