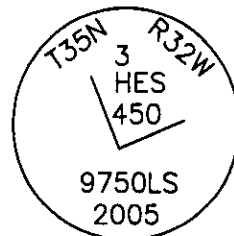


CERTIFIED CORNER RECORDATION

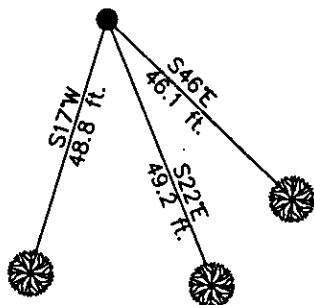
Corner 3 HES 450 T. 35 N. R. 32 W. P.M.M. LINCOLN County

- I. Record: 1915 U.S. Forest Service record of H.E.S. 450 by Fred E. Thieme: Set for Cor. No. 3, a small stone marked with a cross (x) under a granite stone, 24x16x12 ins., 14 ins. in the ground, marked 3 HES on NE face. Raise a mound of earth 4 ft. base, 2 ft. high NE of cor. No bearings available and pits impracticable.
- 1982 Certificate of Survey No. 1018, by J. H. Ninnenman, Reg. No. 4661S: Set a 5/8 in diam. by 24 in. long capped steel pin marked J.H.N. 4661S.
- II. Found a 5/8 in. diam. by 24 in. long rebar with plastic cap marked J.H.N 4661S, bent and pushed out of position, from which:
- A larch, 10 ins. diam., bears S22°E, 49.2 ft. dist., with visible scribe marks.
- III. Set by survey a 5/8 in. diam. by 24 ins. long rebar, 8 ins. below the surface of the road, with a 3/4 in. diam. aluminum cap marked as shown below, from which the 2 new bearing trees:
- A larch, 12 ins. diam., bears S46°E, 46.1 ft. dist., marked 3 HES 450 BT.
A larch, 14 ins. diam., bears S17°W, 48.8 ft. dist., marked 3 HES 450 BT.

Attached Bearing Tree and Land Survey Monument signs to the bearing trees. Painted red the scribed face and a red band around the bearing tree.



Date of Fieldwork: 6/7/2005
Survey crew: Steve Boyer, Tom Hommel
Magnetic declination: 20° East assumed
Equipment used: Hand compass and loggers tape
U.S. Forest Service, Supervisors Office, 1101 Hwy. 2 West, Libby, MT 59923 (406) 293-6211



NOT TO SCALE

SKETCH OF CORNER

CERTIFICATION

I, Thomas M. Hommel 10800 LS
certify the information shown herein is true and correct.

Thomas M. Hommel
Signature Ground Party Chief

I, Steven A. Boyer
certify that this Corner Record correctly represents work performed by me or under my direction in compliance with the "Corner Recordation Act" (70-22-101, et seq., M.C.A.)

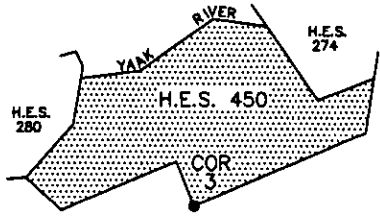
Steven A. Boyer
Signature of Surveyor & Seal

Date: 06/7/2005 Reg. No. 9750LS

Employer: U. S. Forest Service

Office of Clerk and Recorder, County of Lincoln This "corner record" was 189422 BOOK: CCR CC&R'S PAGE: 10876 Pages: 1
was noted o STATE OF MONTANA LINCOLN COUNTY
book No. RECORDED: 11/07/2005 12:08 KOI: CC&R'S
CORAL M. CUMMINGS CLERK AND RECORDER
FEE: \$0.00
TO: FILED

BY Glenn D. Dwyer
Deputy



Cross Index No. 3 H.E.S. 450 T. 35 N. R. 32 W. P.M., MT

Adopted July 1, 1981, Montana Board of Professional Engineers & Land Surveyors

• corner this sheet