

CERTIFIED CORNER RECORDATION

Corner 1 HES 450
4 HES 274 T. 35 N. R. 32 W. P.M.M. LINCOLN County

I. Record: 1914 U.S. Forest Service record of H.E.S. 274 by Elmer R. Johnson: To Cor. No. 4. Set a larch post 6x6x42 ins., 30 ins. in the ground for Cor. No. 4, marked 4 HES 274 on NW face and a cross (x) on top for exact corner point, from which:

A cross (x) on a red fir, 5 ins. diam., bears N8°15'W, 139 lks. dist.

A cross (x) on a red fir, 5 ins. diam., bears N85°7'W, 128 lks. dist., each blazed and scribed 4 HES 274 BT.

Raise a mound of earth and 4 ft. base, 2 ft. high NW. of cor.

1915 U.S. Forest Service record of H.E.S. 450 by Fred E. Thieme: Beginning at Cor. No. 1 of this survey, identical with Cor. No. 4 of accepted H.E.S. 274, a wooden post 12x5x5 ins. above ground, marked and witnessed as described by the Surveyor General. I mark this post for Cor. No. 1, 1 HES 450 on SW. face. From a nail in top:

A cross (x) on a lodgepole pine tree, 4 ins. diam., bears N11°33'W, 139 lks. dist.

A cross (x) on a lodgepole pine tree, 4 ins. diam., bears N85°45'W, 128 lks. dist., each blazed and scribed 1 HES 450 BT.

Raise a mound of earth and 4 ft. base, 2 ft. high SW. of cor.

II. Found:

A pine snag 14 ins. diam., bears N11°W, 91.74 ft. dist. marked 4 HES 274 BT.

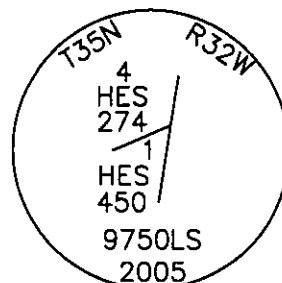
A down pine, 6 ins. diam., bears N86°W, 84.48 ft. dist., marked 4 HES 274 BT.

III. Set by distance-distance intersection from the found original bearing trees, a 2 1/2 in. diam. by 30 in. long aluminum pipe, 26 ins. in the ground with a 3/4 in. diam. aluminum cap marked as shown below, from which the 2 new bearing trees:

A larch, 9 ins. diam., bears N35°E, 29.2 ft. dist., marked 4 HES 274 BT.

A spruce, 14 ins. diam., bears S62°E, 37.45 ft. dist., marked 1 HES 450 BT.

Attached Bearing Tree and Land Survey Monument signs to the bearing trees. Painted red the scribed face and a red band around the bearing tree.



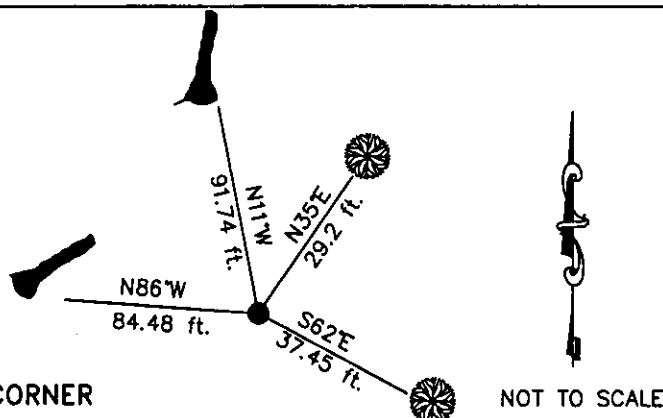
Date of Fieldwork: 6/7/2005

Survey crew: Steve Boyer, Tom Hommel

Magnetic declination: 20° East assumed

Equipment used: Hand compass and loggers tape

U.S. Forest Service, Supervisors Office, 1101 Hwy. 2 West, Libby, MT 59923 (406) 293-6211



SKETCH OF CORNER

CERTIFICATION

Thomas M. Hommel 10800 LS
 I certify the information shown herein is true and correct.

Signature Ground Party Chief

Steven A. Boyer

I certify that this Corner Record correctly represents work performed by me or under my direction in compliance with the "Corner Recordation Act" (70-29-101 et seq., M.C.A.)

Signature of Surveyor & Seal

Date: 06/7/2005 Reg. No. 9750LS

Employer: U. S. Forest Service

Office of Clerk and Recorder, County of Lincoln This "corner

record" was f 189421 BOOK: CCR CC&R'S PAGE: 10875 Pages: 1

STATE OF MONTANA LINCOLN COUNTY

was noted on RECORDED: 11/07/2005 12:07 KOI: CC&R'S

book No. CORAL M. CUMMINGS CLERK AND RECORDER

FEE: \$0.00

BY: *Heather L. Linn*

TO: FILED

1 HES 450

Cross Index No. 4 HES 274 T. 35N. R. 32W. P.M., MT

Adopted July 1, 1981, Montana Board of Professional Engineers & Land Surveyors

• corner this sheet

