

CERTIFIED CORNER RECORDATION

Corner 4 HES 280 T. 35 N. R. 32 W. P.M.M. LINCOLN County

- I. Record: 1914 U.S. Forest Service record by Elmer R. Johnson; Set a black pine post 6x6x42 ins., 30 ins. in the ground, marked 4 HES 280 on N face and a nail in top for exact corner point from which:

A cross (x) on a black pine, 10 ins. diam., N56°2'W, 21 lks. dist.

A cross (x) on a black pine, 8 ins. diam., S50°5'E, 41 lks. dist., each blazed and scribed 4 HES 280 BT.

Raise a mound of earth 4 ft. base, 2 ft. high N of cor.

1978 Certificate of Survey No. 483 by Charles N. Doyle 2516S; Sets a 5/8" rebar with plastic cap marked 2516S for corner 3 H.E.S. 280 from an original bearing tree, and ties corner 3 and 5 of H.E.S. 280.

1978 Certificate of Survey No. 488 by Charles N. Doyle 2516S; Ties corners 3 and 5 of H.E.S. 280.

1978 Certificate of Survey No. 517 by Charles N. Doyle 2516S; Sets by survey, a 5/8" rebar with plastic cap marked 2516S for corner 4 H.E.S. 280.

1983 Certificate of Survey No. 1116 by Charles N. Doyle 2516S; Ties corners 4 and 5 of H.E.S. 280.

- II. Found a 24 in. long x 5/8 in. diam. rebar, 4 ins. above ground with a 1 1/4 in. diam. plastic cap marked 2516S.
- III. Accept the found rebar as the correct position for corner 4 H.E.S. 280. Set in its place a 2 1/2 in. diam. by 30 in. long aluminum monument, 24 ins. in the ground, with a 3 1/4 in. diam. aluminum cap marked as shown, from which:

A spruce, 12 ins. diam., S52°E, 15.15 ft. dist., marked 4 HES 280 BT.

A spruce, 8 ins. diam., S87°W, 22.95 ft. dist., marked 4 HES 280 BT.

Bury the Doyle rebar alongside the aluminum monument.

Attached Bearing Tree and Land Survey Monument signs to the bearing trees. Painted red bands around the bearing trees.

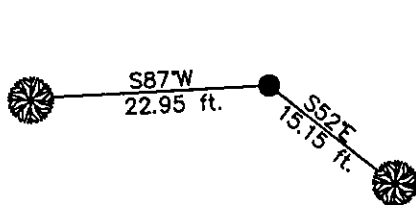
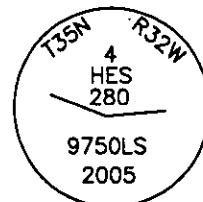
Date of Fieldwork: 8/1/2005

Survey crew: Steve Boyer, Tom Hommel

Magnetic declination: 20° East assumed

Equipment used: Hand compass and loggers tape

U.S. Forest Service, Supervisors Office, 1101 Hwy. 2 West, Libby, MT 59923 (406) 293-6211



SKETCH OF CORNER

NOT TO SCALE

CERTIFICATION

I, Thomas M. Hommel 10800 LS
certify the information shown herein is true and correct.

Signature Ground Party Chief

Steven A. Boyer

I, Steven A. Boyer
certify that this Corner Record correctly represents work performed by me or under my direction in compliance with the "Corner Recordation Act" (70-22-101, et seq., M.C.A.).

Signature of Surveyor & Seal

Date: 08/1/2005 Reg. No. 9750LS

Employer: U. S. Forest Service

Office of Clerk and Recorder, County of Lincoln This "corner

record" was filed for record on

189420 BOOK: CCR CC&R'S PAGE: 10874 Pages: 1

was noted on the STATE OF MONTANA LINCOLN COUNTY

book No. RECORDED: 11/07/2005 12:06 KOI: CC&R'S

CORAL M. CUMMINGS CLERK AND RECORDER

FEE: \$0.00

BY: James D. Dunsen

TO: FILED

Cross Index No. 4 H.E.S. 280 T. 35N. R. 32W. P.M., MT

Adopted July 1, 1981, Montana Board of Professional Engineers & Land Surveyors

• corner this sheet

