

CERTIFIED CORNER RECORDATION

Corner 4 HES 450 T. 35 N. R. 32 W. P.M.M. LINCOLN County

- I. Record: 1915 U.S. Forest Service record of H.E.S. 450 by Fred E. Thieme; Set for Cor. No. 4, a small stone marked with a cross (x) under a shale stone, 25x12x8 ins., 15 ins. in the ground, marked 4 HES 450 on NE face and a cross (x) on top for exact corner point from which:

A cross (x) on a larch tree, 38 ins. diam., S41°55'W, 114 lks. dist.
A cross (x) on a larch tree, 32 ins. diam., N53°17'W, 86 lks. dist., each blazed and scribed 4 HES 450 BT.
Raise a mound of earth and stone, 4 ft. base, 2 ft. high NE of cor.

- II. Found a stone 12x7 ins., 8 ins. above ground, firmly set, with an "x" on top and 4 HES 450 on the NE face, from which:

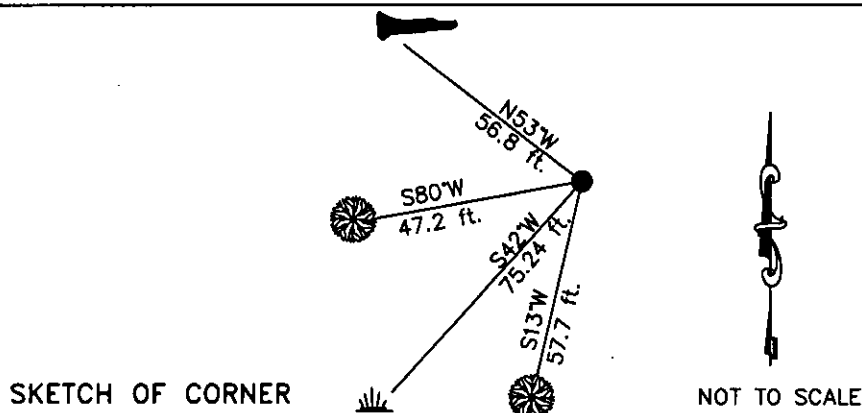
A root crown, bears S42°W, 75.24 ft. dist., no visible marks.
A down larch, 38 ins. diam., bears N53°W, 56.8 ft. dist., with a bearing tree sign.

- III. Establish 2 new bearing trees:

A larch, 7 ins. diam., bears S13°W, 57.7 ft. dist., marked 4 HES 450 BT.
A larch, 11 ins. diam., bears S80°W, 47.2 ft. dist., marked 4 HES 450 BT.

Attached Bearing Tree and Land Survey Monument signs to the bearing trees. Painted red the scribed face and a red band around the bearing tree.

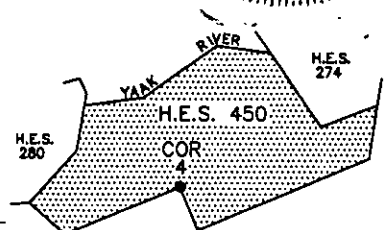
Date of Fieldwork: 6/8/2005
Survey crew: Steve Boyer, Tom Hommel
Magnetic declination: 20° East assumed
Equipment used: Hand compass and loggers tape
U.S. Forest Service, Supervisors Office, 1101 Hwy. 2 West, Libby, MT 59923 (406) 293-6211



CERTIFICATION
I, Thomas M. Hommel 10800 LS
certify the information shown herein is true and correct.
Thomas M. Hommel
Signature Ground Party Chief
I, Steven A. Boyer
certify that this Corner Record correctly represents work performed by me or under my direction in compliance with the "Corner Recordation Act" (70-22-101, et seq., M.C.A.)
Steven A. Boyer
Signature of Surveyor & Seal
Date: 06/8/2005 Reg. No. 97501's
Employer: U. S. Forest Service

Office of Clerk and Recorder, County of Lincoln This "corner

record" 189419 BOOK: CCR CC&R'S PAGE: 10873 Pages: 1
was no STATE OF MONTANA LINCOLN COUNTY
book N RECORDED: 11/07/2005 12:05 KOI: CC&R'S
CORAL M. CUMMINGS CLERK AND RECORDER
FEE: \$0.00 BY: Deanne Cummings Deputy
TO: FILED



Cross Index No. 4 H.E.S. 450 T. 35 N. R. 32 W. P.M., MT

Adopted July 1, 1981, Montana Board of Professional Engineers & Land Surveyors

• corner this sheet