

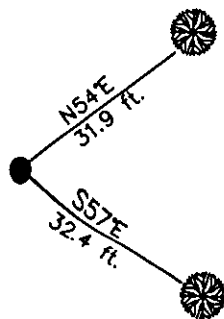
CERTIFIED CORNER RECORDATION

Corner 4 HES 495 T 35 N. R. 32 W. P.M.M. LINCOLN County

- I. Record: 1915 U.S. Forest Service record of H.E.S. 495 by Fred E. Thieme: Set for Cor. No. 4, a small stone marked with a cross (x) under a gneiss stone, 26x15x7 ins., 16 ins. in the ground, marked 4 HES 495 on N. face and a cross "x" on top for the exact corner point. No bearings available, therefore dig pits 24x24x12 ins. crosswise on this and the succeeding course, 7 ft. dist. Raise a mound of earth 4 ft. base, 2 ft. high N. of cor.
- II. Found a stone 14x7 ins., 12 ins. above ground, firmly set, marked 4 HES 495 on N. face and a "x" on top. Pits visible.
- III. Establish 2 new bearing trees:
- A larch, 4 ins. diam., bears N54°E, 31.9 ft. dist., marked 4 HES 495 BT.
A larch, 8 ins. diam., bears S57°E, 32.4 ft. dist., marked 4 HES 495 BT.

Attached Bearing Tree and Land Survey Monument signs to the bearing trees. Painted red the scribed face and a red band around the bearing tree.

Date of Fieldwork: 6/9/2005
Survey crew: Steve Boyer, Tom Hommel
Magnetic declination: 20° East assumed
Equipment used: Hand compass and loggers tape
U.S. Forest Service, Supervisors Office, 1101 Hwy. 2 West, Libby, MT 59923 (406) 293-6211



SKETCH OF CORNER

NOT TO SCALE

CERTIFICATION

I, Thomas M. Hommel 10800 LS
certify the information shown herein is true and correct.

Thomas M. Hommel
Signature Ground Party Chief

I, Steven A. Boyer
certify that this Corner Record correctly represents work performed by me or under my direction in compliance with the "Corner Recordation Act" (70-22-101 et seq., M.C.A.).

Steven A. Boyer
Signature of Surveyor & Seal

Date: 06/9/2005 Reg. No. 9750LS

Employer: U. S. Forest Service

Office of Clerk and Recorder, County of Lincoln This "corner

record" was 189418 BOOK: CCR CC&R'S PAGE: 10872 Pages: 1

was noted or STATE OF MONTANA LINCOLN COUNTY

book No. RECORDED: 11/07/2005 12:04 KOI: CC&R'S

CORAL M. CUMMINGS CLERK AND RECORDER

FEE: \$0.00

BY: Juanita Lewis

TO: FILED

Cross Index No. 4 HES 495 T. 35N.R. 32W. P.M., MT

Adopted July 1, 1981, Montana Board of Professional Engineers & Land Surveyors

• corner this sheet

