

5 HES 408
4 HES 406
5 HES 280

CERTIFIED CORNER RECORDATION

Corner T. 35 N. R. 32 W. P.M.M. LINCOLN County

- I. Record: 1914 U.S. Forest Service record of H.E.S. 280 by Elmer R. Johnson: Set a black pine post 6x6x42 ins., 30 ins. in the ground, marked 5 HES 280 on NE face and a nail in top for exact corner point from which:
- A cross (x) on a black pine, 10 ins. diam., N81°50'E, 157 lks. dist.
 - A cross (x) on a black pine, 10 ins. diam., N21°15'E, 138 lks. dist., each blazed and scribed 5 HES 280 BT.
 - Raise a mound of earth 4 ft. base, 2 ft. high NE of cor.

1915 U.S. Forest Service record of H.E.S. 406 by Fred E. Thieme: Cor. 4, coincident with Cor. No. 5 of accepted H.E.S. No. 280, a post 12x4x4 ins. above ground, marked and witnessed as described by the surveyor general. This post being in bad condition, I replace with a small stone marked with a cross (x) under a quartzite stone, 25x9x7 ins., 15 ins. in the ground, marked 5 H.E.S. 280 on NE face, for Cor. No. 5 of accepted H.E.S. 280 and 4 H.E.S. 406 on NW face, for Cor. No. 4 of this survey, and a cross (x) on top for the exact corner point, from which:

- A cross (x) on a lodgepole pine tree, 12 ins. diam., N35°40'W, 86 lks. dist.
- A cross (x) on a lodgepole pine tree, 10 ins. diam., N10°41'E, 156 lks. dist., each blazed and scribed 4 HES 406 BT.
- Raise a mound of earth 4 ft. base, 2 ft. high NW of cor.

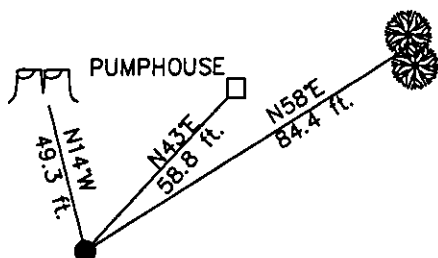
1915 U.S. Forest Service record of H.E.S. 408 by Fred E. Thieme: Cor. 5, identical with Cor. No. 5 of accepted H.E.S. No. 280 and Cor. No. 4 of unapproved H.E.S. No. 406, a quartzite stone, 10x10x5 ins. above ground, as set by me on July 17, 1915. I mark this stone for Cor. No. 5 H.E.S. 408 on W face. From the cross (x) on top:

- A cross (x) on a lodgepole pine tree, 12 ins. diam., N35°40'W, 86 lks. dist.
- A cross (x) on a lodgepole pine tree, 10 ins. diam., N10°41'E, 156 lks. dist., each blazed and scribed 4 HES 408 BT.
- Raise a mound of earth 4 ft. base, 2 ft. high West of cor.

1984 Certified Corner Recordation by Melvin D. Lauteren, Reg. No. 4232S: Found original quartzite stone firmly in place with no evidence of original bearing trees. Set 2 new bearing trees:

- A lodgepole pine, 17 ins. diam., bears N75°30'E, 5308 ft. dist., falls in yard area of residence, therefore not blazed or scribed.
- A spruce with several trunks, bears N14°W, 49.3 ft. dist., because of numerous stems, not blazed or scribed. With St. Regis location posters.

- II. Found a stone, 6x10 ins., 4 ins. above ground, firmly set, with visible marks 4 and 0 on NW face and ES 280 on NW face. The west face is partially fractured off. From which:
Twin spruce stumps, bears N14°W, 49.3 ft. dist..
- III. Establish 2 new bearing objects.
SW corner of a pumphouse, bears N43°E, 58.8 ft. dist.
A spruce, 25 ins. diam., N58°E, 84.4 ft. dist.
- These bearing objects fall in the yard area of the residence, therefore we did not paint or blaze and scribe.
- Date of Fieldwork: 6/9/2005
Survey crew: Steve Boyer, Tom Hommel
Magnetic declination: 20° East assumed
Equipment used: Hand compass and loggers tape
U.S. Forest Service, Supervisors Office, 1101 Hwy. 2 West, Libby, MT 59923 (406) 293-6211



SKETCH OF CORNER

NOT TO SCALE

CERTIFICATION

I, Thomas M. Hommel 10800 LS
certify the information shown herein is true and correct.

Signature Ground Party Chief

Steven A. Boyer
certify that this Corner Record correctly represents work performed by me or under my direction in compliance with the "Corner Recordation Act" (70-22-101, et seq., M.C.A.).

Signature of Surveyor & Seal

Date: 06/9/2005 Reg. No. 9750LS

Employer: U. S. Forest Service

Office of Clerk and Recorder, County of Lincoln This "corner

record" was 189417 BOOK: CCR CC&R'S PAGE: 10871 Pages: 1

was noted o STATE OF MONTANA LINCOLN COUNTY

book No. RECORDED: 11/07/2005 12:03 KOI: CC&R'S

FEE: \$0.00 BY: Jammie Lewis

TO: FILED

5 H.E.S. 408
4 H.E.S. 406

Cross Index No. 5 H.E.S. 280 T. 35 N. R. 32 W. P.M., MT

Adopted July 1, 1981, Montana Board of Professional Engineers & Land Surveyors

• corner this sheet

