

CERTIFIED CORNER RECORDATION

Corner 1 HES 274
5 HES 495 T 35 N. R. 32 W. P.M.M. LINCOLN County

I. Record: 1914 U.S. Forest Service record of H.E.S. 274 by Elmer R. Johnson; Set for Cor. No. 1, a quartzite stone 24x14x10 ins., 14 ins. in the ground, marked 1 HES 274 on NW face and a cross (x) on top for exact corner point, from which:

- A cross (x) on a larch, 24 ins. diam., bears S79°15'W, 174 lks. dist.
- A cross (x) on a larch, 36 ins. diam., bears S30°13'E, 35 lks. dist., each blazed and scribed 1 HES 274 BT.

Raise a mound of earth 4 ft. base, 2 ft. high NW of cor.

1915 U.S. Forest Service record of H.E.S. 495 by Fred E. Thieme; Identical with Cor. Nos. 1 of accepted H.E.S. No. 274 and unapproved H.E.S. 451, a quartzite stone, 10x14x10 ins. above ground, marked and witnessed as described by the surveyor general. I mark this stone for Cor. No. 5, 5 HES 495 on NE face. From the cross "x" on top:

- A cross (x) on a larch tree, 36 ins. diam., bears N30°10'E, 34 lks. dist.
 - A cross (x) on a larch tree, 26 ins. diam., bears S79°12'W, 171 lks. dist., each blazed and scribed 5 HES 495 BT.
- Raise a mound of stone 4 ft. base, 2 ft. high NE of cor.

II. Found a stone 8x11 ins., 11 ins. above ground, firmly set, marked 1 HES 274 on NW face and 5 HES 495 on NE and a "x" on top, from which:

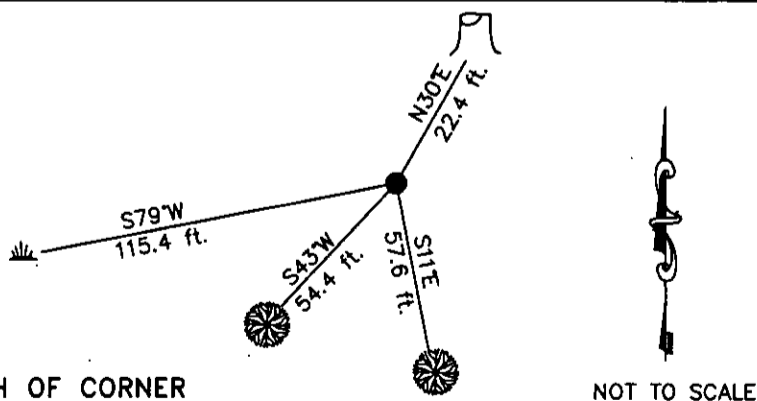
- A larch stump, 36 ins. diam., bears N30°E, 22.4 ft. dist., with BT visible.
- A root crown with rotten remains, bears S79°W, 115.4 ft. dist. with 1 HES visible on remains.

III. Establish 2 new bearing trees:

- A larch, 20 ins. diam., bears S11°E, 57.6 ft. dist., marked 5 HES 495 BT.
- A larch, 15 ins. diam., bears S43°W, 54.4 ft. dist., marked 1 HES 274 BT.

Attached Bearing Tree and Land Survey Monument signs to the bearing trees. Painted red the scribed face and a red band around the bearing tree.

Date of Fieldwork: 6/9/2005
Survey crew: Steve Boyer, Tom Hommel
Magnetic declination: 20° East assumed
Equipment used: Hand compass and loggers tape
U.S. Forest Service, Supervisors Office, 1101 Hwy. 2 West, Libby, MT 59923 (406) 293-6211



SKETCH OF CORNER

NOT TO SCALE

CERTIFICATION

I, Thomas M. Hommel 10800 LS
certify the information shown herein is true and correct.

Thomas M. Hommel
Signature Ground Party Chief

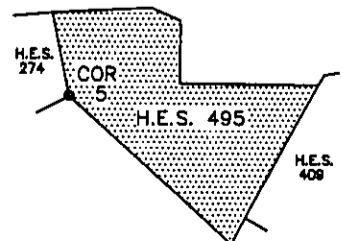
I, Steven A. Boyer
certify that this Corner Record correctly represents work performed by me or under my direction in compliance with the "Corner Recordation Act" (70-22-101 et seq., M.C.A.)

Steven A. Boyer
Signature of Surveyor & Recorder

Date: 06/9/2005 Reg. No. 97501S

Employer: U. S. Forest Service

Office of Clerk and Recorder, County of Lincoln This "corner record" was filed for STATE OF MONTANA LINCOLN COUNTY 189415 BOOK: CCR CC&R'S PAGE: 10869 Pages: 1
was noted on the cr RECORDED: 11/07/2005 12:01 KOI: CC&R'S
book No. CORAL M. CUMMINGS CLERK AND RECORDER
FEE: \$0.00 BY:
TO: FILED



1 HES 274

Cross Index No. 5 HES 495 T. 35N. R. 32W. P.M., MT

Adopted July 1, 1981, Montana Board of Professional Engineers & Land Surveyors

• corner this sheet