

CERTIFIED CORNER RECORDATION

Corner Cor. 3 H.E.S. 457 Sec. 6 T. 35N R. 31W P.M., MT Lincoln County

- I. 1915 G. L. O. original notes by Fred E. Thieme: Set for Cor. No. 3, a small stone, marked with a cross "X" under a quartzite stone, 25 X 12 X 7 ins., 15 ins. in the ground, marked 3 HES 457 on NW. face, and a cross "X" on top for the exact corner point, from which:

A cross "X" on a lodgepole pine, 7 ins. diam., bears S 12°06' E, 16 lks. dist.
A cross "X" on a lodgepole pine, 13 ins. diam., bears N 55°40' W, 10 lks. dist., each blazed and scribed 3 HES 457 BT.

Raise a mound of earth and stone, 4ft. base, 2 ft. high, NW. of corner.

- II. Found a stone, 5 X 12 ins., 11 ins. above the ground, firmly set and mkd. 3 HES 457 on NW. face, and a cross "X" on top, from which:

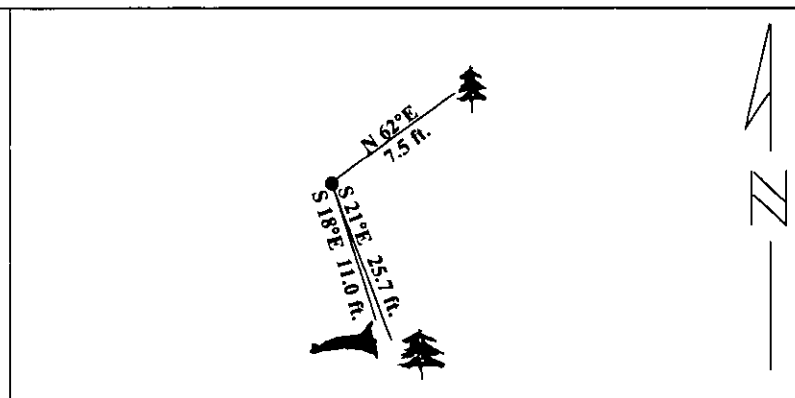
A dead and down pine, 12 ins. diam., bears S 18°E, 11.0 ft. mkd. 3 HES 457 BT. (tree has been moved from original position due to road construction.

- III. Establish two new bearing trees:

A larch, 13 ins. diam., bears N 62°E, 7.5 ft. dist., mkd. 3 HES 457 BT.
A larch, 11 ins. diam., bears S 21°E, 25.7 ft. dist., mkd. 3 HES 457 BT.

Painted red bands around the bearing trees and attached Land Survey Monument and Bearing Tree signs.

Magnetic Declination: 20° East



SKETCH OF CORNER

CERTIFICATION

I, Jeff Hintz
certify the information shown herein is true and correct.

Signature Ground Party Chief

I, Alvah F. Hughes
certify that this Corner Record correctly represents work performed by me or under my direction in compliance with the "Corner Recordation Act" 70-22-101, et seq., M.C.A.)

Signature of Surveyor & Seal

Date: 12/14/95

Reg. No.: 7322LS

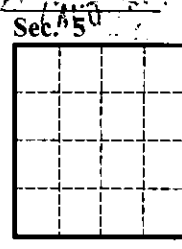
Employer: U.S. FOREST SERVICE

Professional Engineer Seal: ALVAH F. HUGHES, 7322 LS, REGISTERED PROFESSIONAL ENGINEER, MONTANA

Office of Clerk and Recorder, County of LINCOLN. This "corner record" was filed for record on JULY 29, 1997 was noted on the cross-index plat and is assigned page No. 977.1 in book No. _____

CORAL M. CUMMINGS

County Official



● - corner this sheet

Cross Index No. Cor. 3 HES 457 T. 35N R. 31W PMM