

CERTIFIED CORNER RECORDATION

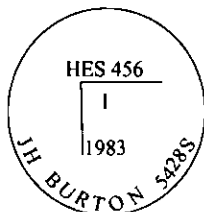
Corner Cor. 1 H.E.S. 456 Sec. 6 T. 35N R. 31W P.M., MT. Lincoln County

- I. 1915 G. L. O. original notes by Fred E. Thieme: Beginning at Cor. No. 1 of this survey, coincident in point for list Cor. No. 1, and identical with Cor. No. 4 of unapproved H. E. S. 404, a shale stone, 10 X 16 X 9 ins. above ground, as set by me on August 17, 1915. I mark this stone for Cor. No. 1, 1 H. E. S. 456 on SE. face. From the cross "X" on top

A cross "X" on a larch tree, 14 ins. diam., bears S 73°53' E, 68 lks. dist.

A cross "X" on a larch tree, 18 ins. diam., bears S 8°25' E, 82 lks. dist., each blazed and scribed 1 HES 456 BT.

1983 Certified Corner Recordation by James N. Burton: Found original stone firmly in place and both BT's. Set a 2 1/2 in. X 30 in. aluminum monument with 3 1/4 in. cap, 24 ins. in the ground, with a collar of stone marked as shown:



A 26 in. larch, bears S 73°E, 44.6 ft. scribing visible.

A 31 in. larch, bears S 8°E, 53.8 ft. scribing visible.

Painted red bands around the BT's and attached BT signs.

NOTE: The position of the monument was set from the "X" found on top of the original stone.

- II. Found a 2 1/2 in. diam. aluminum pipe, 5 ins. above the ground, firmly set in a collar of stone, with a 3 1/4 in. diam. aluminum cap, mkd. as shown above, from which:

A larch, 26 in. diam., bears S 73°E, 59.0 ft., mkd. with visible scribe marks.

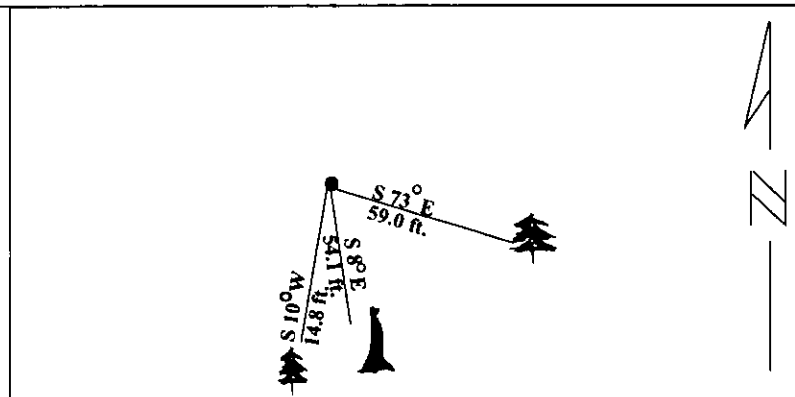
A dead larch, 30 in. diam., bears S 8°E, 54.1 ft., mkd. with a healed face.

- III. Establish one new bearing tree:

A larch, 11 ins. diam., bears S 10°W, 14.8 ft. dist., mkd. 1 HES 456 BT.

Painted red bands around the bearing trees and attached Land Survey Monument and Bearing Tree signs.

Magnetic Declination: 20° East



SKETCH OF CORNER

CERTIFICATION

I, Jeff Hintz

certify the information shown herein is true and correct.

Signature Ground Party Chief

I, Alvah F. Hughes

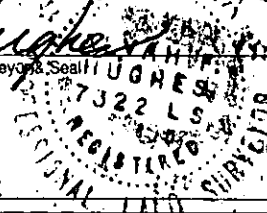
certify that this Corner Record correctly represents work performed by me or under my direction in compliance with the Corner Recordation Act (70-22-101, et seq. M.C.A.)

Alvah F. Hughes
Signature of Surveyor & Seal

Date: 12/12/95

Reg. No.: 7322LS

Employer: U.S. FOREST SERVICE



Sec. 6

LINCOLN

Office of Clerk and Recorder, County of _____ This "corner record" was filed for record

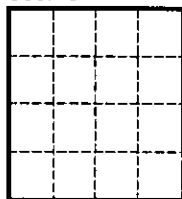
on JULY 29, 1997 was noted on the cross-index plat and is assigned page No. 97.73

in book No. _____

CORAL M. CUMMINGS

County Official

By OUB



• - corner this sheet