

INSTRUCTIONS

1. Original and/or subsequent record used to evaluate the corner position.
2. Description of evidence found, note discrepancies in the record, state method of establishing lost or obliterated corners.
3. Description of monument and accessories set to perpetuate the corner position.
4. Sketch of corner, show all pertinent data which can best be shown in a sketch example, corner marking, topography ties, position of accessories, etc.
5. Certification must be signed and sealed by Land Surveyor registered in the State of Montana.
6. Fill in Cross Index & Section Diagram at bottom of sheet.

CERTIFIED CORNER RECORDATION

Corner COR 1 HES 344 \ COR 13 HES 349 T. 35 N. R. 31 W. P.M.M. LINCOLN County

- I. HES 349 by F. Thieme, June, 1915: Coincident to the point for list Cor No. 5, and incidental with Cor No. 10 of unimproved HES No. 343, a shale stone 10x9x8 ins. above ground, as set by me on May 26, 1915. I mark this stone for Cor. No. 13, 13 HES 349 on N. face. From the cross (x) on top:

A cross (x) on a lodgepole pine tree, 12 ins. dia., bears S. $66^{\circ} 12'$ E., 53 lks. dist.

A cross (x) on a larch tree 14 ins. dia., bears N. $18^{\circ} 56'$ W., 42 lks. dist.; each blazed and scribed 13 HES 349 BT.

Raised a mound of earth 4 ft. base, 2 ft. high, N. of corner.

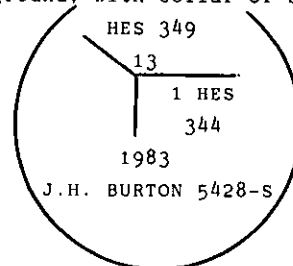
HES 344 by F. Thieme, July, 1915: Beginning at Cor. No. 1 of this survey, coincident in point for list Cor. No. 6, and identical with Cor. Nos. 10 and 13 of unimproved HES Nos. 343 and 349, respectively, a shale stone 10x9x8 ins. above ground, as set by me on May 26, 1915. I mark this stone for Cor. No. 1, 1 HES 344 on SE face and scribed 1 HES 344 BT on the same BT's as recorded for Corner 13 of HES 349.

Raise a mound of earth 4 ft. base, 2 ft. high, SE of corner.

Lincoln County Corner Recordation No. 2405 by J. Burton, February, 1984:

Found original slate stone firmly in place and both BT's.

Set a 2 1/2 " x 30" Aluminum Monument with 3 1/4" cap, 24" in the ground, with collar of stone, marked:



From which:

A stump, bears N. 19° W., 27.7 ft. dist., scribing visible.

A stump, bears S. 66° E., 35.4 ft. dist., scribing visible

A Larch, 7 ins. diam., bears N. 41° E., 11.8 ft. dist., scribed 13 HES 349 BT. (New BT.)

A Larch, 6 ins. diam., bears N. 75° W., 13.0 ft. dist., scribed 13 HES 349 BT. (New BT.)

Painted red bands around the B.T.'s and attached BT signs.

NOTE: The position of the monument was set from the "x" found on top of the original stone.

- II I found 2 1/2 in. diam. aluminum monument with a 3 1/4 in. USFS aluminum cap, marked as shown above, 9 ins. high in mound of stone from which:

The remains of the 1915 bearing trees:

A decaying larch stump, 24 ins. dia., bears S. 66° E., 35.6 ft. dist. with visible scribing: "10 HES 343, 13 HES 349, 1 HES 344 BT".

A decaying larch stump, 26 ins. dia., bears N. 20° W., 27.8 ft. dist. with visible scribing "HES".

Burton bearing trees:

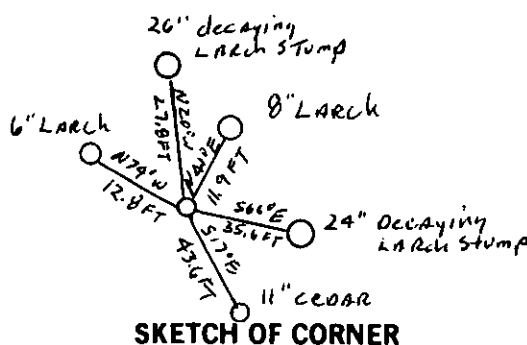
A larch, 8 ins. dia., bears N. 41° E., 11.9 ft. dist., scribed "13 HES 349 BT".

A larch, 6 ins. dia., bears N. 74° W., 12.8 ft. dist., scribed "13 HES 349 BT". This tree is bent over and cut off.

- III I set a 6 ft. galvanized steel guard post with Survey Marker and Property Boundary decals attached, 3 ft. south of the monument, on the property line. I marked and scribed one new bearing tree:

A cedar, 11 ins. dia., bears S. 17° E., 43.6 ft. dist., scribed "1 HES 344 BT".

I painted red bands around bearing trees and attached BT and Land Survey Monument signs.



SKETCH OF CORNER

CERTIFICATION

I, Janet E. Kempff
certify the information shown herein is true and correct.

Janet E. Kempff
Signature Ground Party Chief

I, Alvah F. Hughes
certify that this Corner Record correctly represents work performed by me or under my direction in compliance with the Corner Recordation Act" (70-22-101, et seq., M.C.A.)

Alvah F. Hughes
Signature of Surveyor & Seal

Date 9-27-88 Reg. No. 7322S

Employer: U.S. FOREST SERVICE

Office of Clerk and Recorder, County of Lincoln. This "corner record" was filed for record on Oct 3, 1988

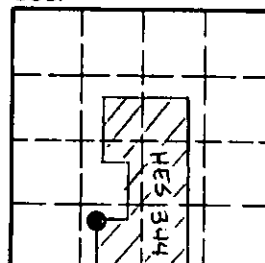
was noted on the cross-index plat and is assigned page No. 3922, in

book No. _____

Cross Index No. 1-HES 344 T. 35 N R. 31 W PMM

Adopted July 1, 1981, Montana Board of Professional Engineers & Land Surveyors

Sec. 18



• - corner this sheet

INSTRUCTIONS TO SURVEYORS FOR COMPLETION OF CERTIFIED CORNER RECORDATION FORMS

I. ORIGINAL AND/OR SUBSEQUENT RECORD:

This item should describe or quote those portions of the original or subsequent record which were used in evaluating the corner position. The original record will usually be the General Land Office field notes. Subsequent record can come from several sources: Previously filed corner records, maps and plats, private and public records, etc. Some of the subsequent record, even though not in the public record, but known to have validity by the surveyor, may be quoted and appropriately noted.

The record data helps support the reestablished corner position because it clearly shows what history the surveyor based his corner position on. In some cases, however, the record may be unknown or not pertinent. A statement to that effect should appear on the corner record.

II. DESCRIPTION OF EVIDENCE FOUND OR METHOD OF LOCATING CORNER POSITION:

This item will describe the original or subsequent record evidence found. If portions of the found evidence cannot be reconciled with the record, then the disregarded record should be noted, and, if possible, an opinion as to its cause narrated.

If no physical evidence of the original or subsequent monuments and accessories can be found, then the method used to reestablish the lost or obliterated corner (single proportion, fence intersection, parol evidence, terrain calls, centerline of road, etc.) shall be indicated.

III. DESCRIPTION OF MONUMENTS AND ACCESSORIES SET TO PERPETUATE THE CORNER POSITION:

This item should list all details about the corner and its location which will help exclusively identify the corner position; including size and type of monument, how marked if not shown in sketch, and distinguishing topographic calls which help locate the corner. In many cases, instructions on how to find the corner should be included.

References or ties to other corners are optional and may be drawn on the face or back of the corner record form, or references to Certificate of Survey may be made. Separate drawings may be attached to the corner form.

If state plane coordinate values for the corner position are shown, then the control upon which they are based should be indicated.

IV. SKETCH OF CORNER:

This item will usually show how a found or set corner is marked and may also show topography or accessory monuments found or set and their relation to the corner. There is no stipulated format; the sketch could be transcribed field note entries.

V. CERTIFICATION:

The name and signature of the ground party chief is optional.

The Surveyor who performed or directed the field work which is depicted on the "Certified Corner Record" shall sign and affix his seal in the Certification.

The employer blank is optional but useful in tracking down original field note data or adjacent record if, in the future, questions arise about the corner.

VI.

The Cross Index at the bottom of the page should be completed by the Surveyor. Only the single Township Index where the corner is filed shall be completed.

The lower righthand corner is a corner location diagram and should have the pertinent section filled in at the top and a closed circle indicating the appropriate corner position in the section filled in. This is intended to be an aid in searching the "Record" once it has been filed.

RECEIVED
JAN 10 1964
FEDERAL BUREAU OF SURVEY