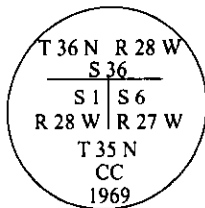


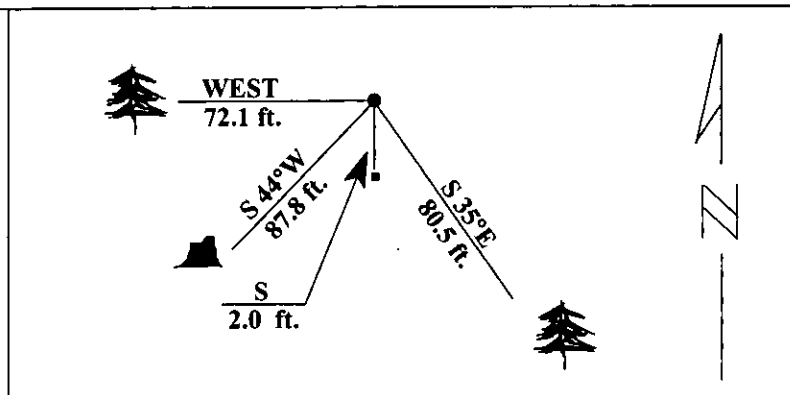
CERTIFIED CORNER RECORDATION

Corner NE SEC. COR. Sec. 1 T. 35 N R. 28 W P.M., MT. Lincoln County

- I. 1893 G.L.O. survey of the West. bdy. of T36N R27W by Peter McCardell et al: Set a limestone and four bearing trees.  
1903 G.L.O. Resurvey and Reestablishment of the Fr. W. bdy. of T36N R27W by A. L. Rinearson et al: Set a porophry stone, 15 x 12 x 6 ins. 10 ins. in the ground for cor. of Tps. 35 and 36 N., Rs 27 and 28 W., marked with 6 notches on each edge, from which:  
A fir, 12 ins. diam., bears N 15°45'E, 48 lks. dist., mkd. T36N R27W S31 BT.  
A tamarack, 12 ins. diam., bears S 39 1/2°E, 46 lks. dist., mkd. T35N R27W S6 BT.  
A tamarack, 10 ins. diam., bears S 27 1/4°W, 57 lks. dist., mkd. T35N R28W S1 BT.  
A tamarack, 14 ins. diam., bears N 64°W, 42 lks. dist., mkd. T36N R28W S36 BT.  
The old Tp. cor. which is a stone marked and witnessed as described by the surveyor general, I destroy.  
1913 Original G.L.O. survey of the W. bdy. of T35N R27W by Lewellyn D. Lyman: North on a random line along the West boundary of Tp. 35 N., R 27 W., setting temp. 1/4 sec. corners at regular intervals of 40.00 chs., and at 484.85 chs., intersect the N. bdy. of the Tp. 4.50 chs. West of the cor. of Tps. 35 and 36 N., Rs. 27 and 28 W., which is a stone, 14 x 8 x 6 ins. above ground, firmly set, properly marked and witnessed as described by the surveyor general. I destroy the marks on the south side of the stone, and the marks upon the bearing trees SE. and SW. of the corner. Henceforth this will be the corner of T. 36 N., Rs. 27 and 28 W.  
Set a limestone, 18 x 13 x 7 ins., 12 ins. in the ground, for Closing cor. of Tp. 25 N., Rs. 27 and 28 W., mkd. CC on S., with 6 grooves on S., E. and W. faces, from which:  
A fir, 10 ins. diam., bears S 35 1/4°E, 122 lks. dist., mkd. T35N R27W S6 BT.  
A fir, 24 ins. diam., bears S 44 1/4°W, 133 lks. dist., mkd. T35N R26W S1 BT.  
1969 B.L.M. remonumentation by Roy G. Leedy: The closing cor. of Tp.35 N., Rs. 27 and 28 W., monumented with a limestone, 16 x 12 x 6, firmly set, mkd. 6 notches on the E., S., and W. edges, and witnessed by the remains of the original bearing trees:  
A fir, 14 ins. diam., bears S 35 3/4°E, 122 lks. dist., mkd. T35N R27 S6 BT.  
A stump, bears S 44 3/4°W, 133 lks. dist., with no visible marks.  
At the corner point  
Set an iron post, 30 ins. long, 2 1/2 ins. diam., 24 ins. in the ground., with brass cap marked:



- from which:  
A fir, 6 ins. diam., bears S 88°W, 110 lks. dist., mkd. T35N R28W S1 CC BT.  
Bury the original stone alongside and raise a collar of stone, 2 ft. diam., around the iron post.
- II. Found an iron pipe., 2 1/2 ins. diam., 14 ins. above ground, firmly set in a collar of stone, with a 3 1/4 in. daim. brass cap mkd. as shown above, from which:  
A fir, 16 ins. diam., bears S 35°E, 80.5 ft. (122 lks.) dist., mkd. with visible scribe marks.  
A fir, 14 ins. diam., bears WEST, 72.1 ft. (109.2 lks.) dist., mkd. with a healed face.  
A stump, bears S 44°W, 87.8 ft. (133 lks.) dist., with no visible marks.  
A 6 ft. steel post bears SOUTH, 2 ft. dist., with Property Boundary and Land Survey Monument decals attached.
- III. Painted red bands around the bearing trees and attached Land Survey Monument and Bearing Tree signs.  
Magnetic Declination: 20° East.



SKETCH OF CORNER

CERTIFICATION.

I, Thomas M. Hommel  
certify the information shown herein is true and correct.

Signature Ground Party Chief

I, Ronald A. Pearson  
certify that this Corner Record correctly represents work performed by me or under my direction in compliance with the "Corner Recordation Act" (RS-22-101, et seq., M.C.A.)

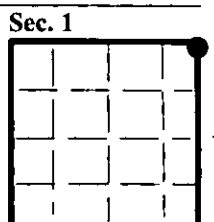
Signature of Surveyor & Seal

Date: 1/29/96

Reg. No.: 9008LS

Employer U.S. FOREST SERVICE

Office of Clerk and Recorder, County of LINCOLN. This "corner record" was filed for record on AUG21,1997 was noted on the cross-index plat and is assigned page No. 9912 in book No. CORAL M. CUMMINGS By ALB County Official



• - corner this sheet