

# CERTIFIED CORNER RECORDATION

Corner N 1/4 Sec. 1 T. 35 N R. 28 W P.M., MT. Lincoln County

I. 1904 Original G.L.O. survey of the S. bdy of T. 36 N., R. 28 W. by Abraham L. Rinearson et al: Set a limestone, 13 x 12 x 8 ins., 9 ins. in the ground, for 1/4 sec. cor., marked. 1/4 on N. face, from which:

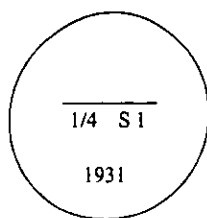
A tamarack, 16 ins. diam., bears N 31 1/4°W, 55 lks. dist., mkd. 1/4 S 36 BT.  
A tamarack, 20 ins. diam., bears S 46°W, 18 lks. dist., mkd. 1/4 S 1 BT.

1930 Retracement of the South Boundary of T. 36 N., R. 28 W. by William A. Bandy et al: The 1/4 sec. cor. of secs. 1 and 36, which is a limestone 10 x 5 x 4 ins. above ground, firmly set, marked and witnessed as described in the official record. This corner will hereafter refer to sec. 36 only, therefore, I erase the marks on the SW. bearing tree, and mark a new one as follows:

A tamarack, 12 ins. diam., bears N 35 1/2°E, 57 lks. dist., mkd. 1/4 S 36 BT.

Continuing line and measurement.

Set an iron post, 3 ft. long, 1 in. diam., 28 ins. in the ground, for the 1/4 sec. cor. of sec. 1 only, with brass cap marked:



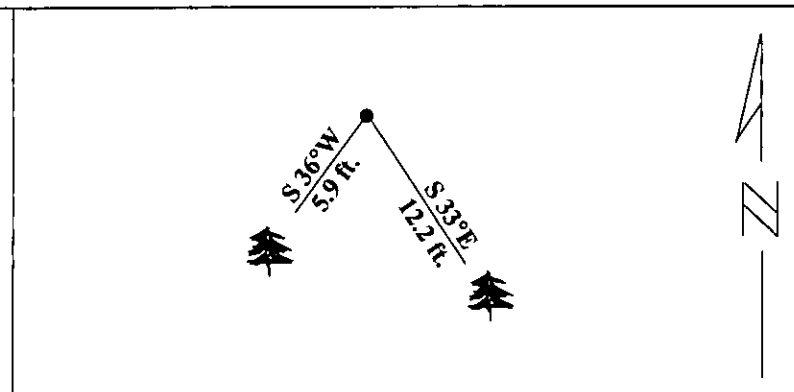
from which:

A fir, 14 ins. diam., bears S 41 1/2°E, 19 lks. dist., mkd. 1/4 S 1 BT.  
A fir, 10 ins. diam., bears S 28 1/4°W, 9 lks. dist., mkd. 1/4 S 1 BT.

II. Found a 1 in. diam. iron pipe, 6 ins. above ground, firmly set, with a 2 1/2 in. diam. brass cap, mkd. as shown above, from which:

A fir, 15 ins. diam., bears S 33°E, 12.2 ft. (18.5 lks.) dist., mkd with a healed face. (Rec: S 41 1/2°E)  
A fir, 11 ins. diam., bears S 36°W 5.9 ft. (8.9 lks.) dist., mkd with a healed face. (Rec: S 28 1/4°W)

III. Painted red bands around the bearing trees and attached Land Survey Monument and Bearing Tree signs.  
Magnetic Declination: 20° East.



SKETCH OF CORNER

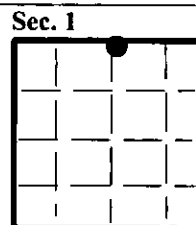
CERTIFICATION  
I, Thomas M. Hommel  
certify the information shown hereinafter is true and correct.

Signature Ground Party Chief  
I, Ronald A. Pearson  
certify that this Corner Record correctly represents work performed by me or under my direction in compliance with the "Corner Recordation Act" (70-22-101, et seq., M.C.A.)

Signature of Surveyor & Seal  
Date: 1/30/96  
Reg. No.: 9008LS  
Employer U.S. FOREST SERVICE

Office of Clerk and Recorder, County of LINCOLN. This "corner record" was filed for record on AUG 21, 1997 was noted on the cross-index plat and is assigned page No. 9900, in book No. CORAL M. CUMMINGS By OLB

County Official



● - corner this sheet