

CERTIFIED LAND CORNER RECORDATION

Original DESCRIPTION OF CORNER EVIDENCE FOUND, AND ORIGINAL RECORD (IF KNOWN)
 Record 1904
 77.52 Set a basalt stone 16x14x9 ins. 11 ins. in the ground for cor. of
 Tps. 35 and 36 N., Rs. 28 and 29 W. marked with 6 notches on each
 edge; from which A fir, 14 ins. dia., bears N. 20° E. 27 lks.
 dist., marked T 36 N R 28 W S 31 B T A fir, 24 ins. dia., bears
 S. 70° E. 72 lks. dist., marked T 35 N R 28 W S 6 B T A fir, 9 ins.
 dia. bears S. 80° W. 13 lks. dist., marked T 35 N R 29 W S 1 B T
 A fir, 8 ins. dia., bears N. 32° W. 25 lks. dist., marked T 36 N R
 29 W S 36 B T
 Land rolling and mountainous.

For subsequent record see reverse side:

DESCRIPTION OF MONUMENT AND ACCESSORIES ESTABLISHED TO PERPETUATE THE ORIGINAL LOCATION OF THIS CORNER:

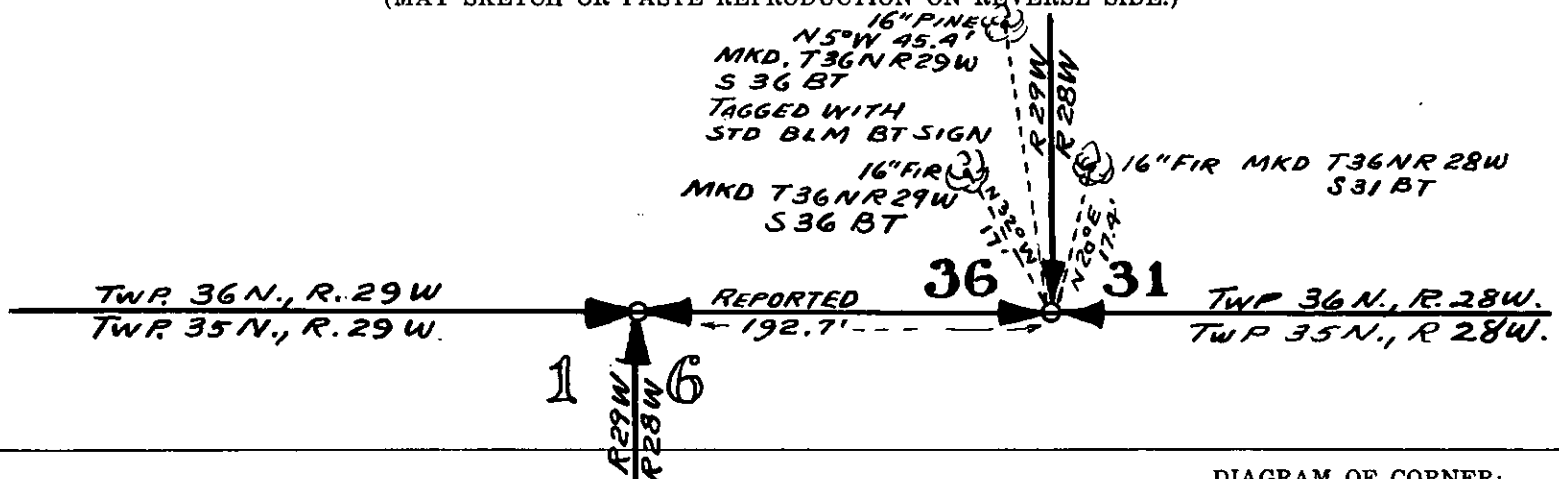
Date of work: 14/6/66

Found basalt stone (original) 6 notches on south, east, and
 West edges and 2 on north from which original bearing trees:-
 An 8" fir (now a 16" fir) bears N 32° W 17' marked T 36 N R 29 W S 36 B T
 A 14" fir (now a 16" fir) bears N 20° E 17.4' marked T 36 N R 28 W S 31 B T
 Markings barely legible-both BTS tagged with BLM BT signs. We set a 2"
 pipe with brass cap

Marked thus alongside in a mound of stone with original stone

T 36 N
 R 29 | R 28
 36 | 31
 T 35 N
 1966

SKETCH, WITH COURSE AND DISTANCE TO ADJACENT CORNERS IF DETERMINED IN THIS SURVEY. (MAY SKETCH OR PASTE REPRODUCTION ON REVERSE SIDE.)



Surveyor's Seal

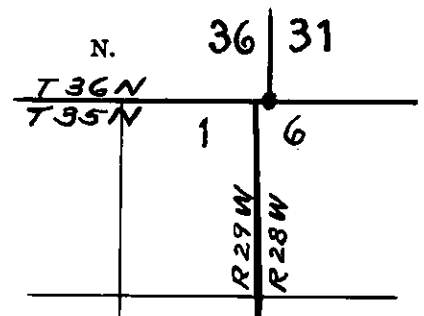
I, _____
 certify that the information shown herein is true and
 correct.

Signature of Ground Party Chief

I, J. W. Ninneman
 certify that I have carefully performed or reviewed the
 work done on the diagrammed corner as reported on this
 recordation form and approve the same.

J. W. Ninneman
 Signature of Surveyor

DIAGRAM OF CORNER:



● = Corner recorded on the sheet

#534 ES
 Registration Number

Office of Clerk and Recorder, County of Lincoln

This "corner record" was filed for record on the 2nd. day of August 1966, was noted on the cross-index plat and is

assigned page No. 53, in book No. 1

ELEANOR L. VAUGHN, By: *Kerda Higden*
 County Official Deputy.

Cross Index No. A-1- 35 28
 A-25 35 29
 Z-1 36 28
 Z-25 36 29

1930
85.30 Intersect S. Bdy. of T. 36 N., R. 29 W.
Set an iron post, 3 ft. long, 3 ins. diam., 28 ins. in the ground,
for the closing corner of Tps. 35 N., Rs. 28 and 29 W., with brass
cap marked

T 36 N R 29 W	
S. 36	
S 1	S 6
R 29 W	R 28 W
T 35 N	
C C	
1930	

bears S. $31\frac{1}{2}^{\circ}$ E., 34 lks. dist., marked T 35 N R 28 W S 6 C C B T.

A yellow pine, 36 ins. diam., bears S $46\frac{1}{2}^{\circ}$ W., 45 lks. dist., marked
T 35 N R 29 W S I C C B T.

Elevation 3635 ft.

From point of intersection the corner of Tps. 36 N., R's. 28 and 29 W.,
bears East 2.92 chains; which is a limestone 8x6x6 ins. above
ground; firmly set, marked and witnessed as described in the official
record.

This corner is 90 ft. lower. Elevation 3545 ft.

STATE OF MONTANA
COUNTY OF LINCOLN

Filed this 29th day of August
at 10:05 A.M. 1946
By Edmund J. Hughes County Clerk
Walter W. Jones Deputy