

# CERTIFIED LAND CORNER RECORDATION

## DESCRIPTION OF CORNER EVIDENCE FOUND, AND ORIGINAL RECORD (IF KNOWN)

Original  
Record  
1903

40.00 Set a lava stone 14x12x6 ins. 9 ins. in the ground for  $\frac{1}{4}$  sec. cor.  
marked  $\frac{1}{4}$  on N. face; from which A fir, 7 ins. dia., bears N.  $72^{\circ}$   
W. 27 lks dist., marked  $\frac{1}{4}$  S 32 B T A fir 5 ins. dia., bears S.  $40\frac{1}{2}^{\circ}$   
W. 89 lks. dist., marked  $\frac{1}{4}$  S 5 B T

For subsequent record see reverse side:

## DESCRIPTION OF MONUMENT AND ACCESSORIES ESTABLISHED TO PERPETUATE THE ORIGINAL LOCATION OF THIS CORNER:

Date of work: 3/6/66

We set a 2" pipe with Brass cap at corner-marked T 36 N  
 $\frac{1}{4}$  S 32  
Original stone set alongside in a mound of stone R 28 W  
1966

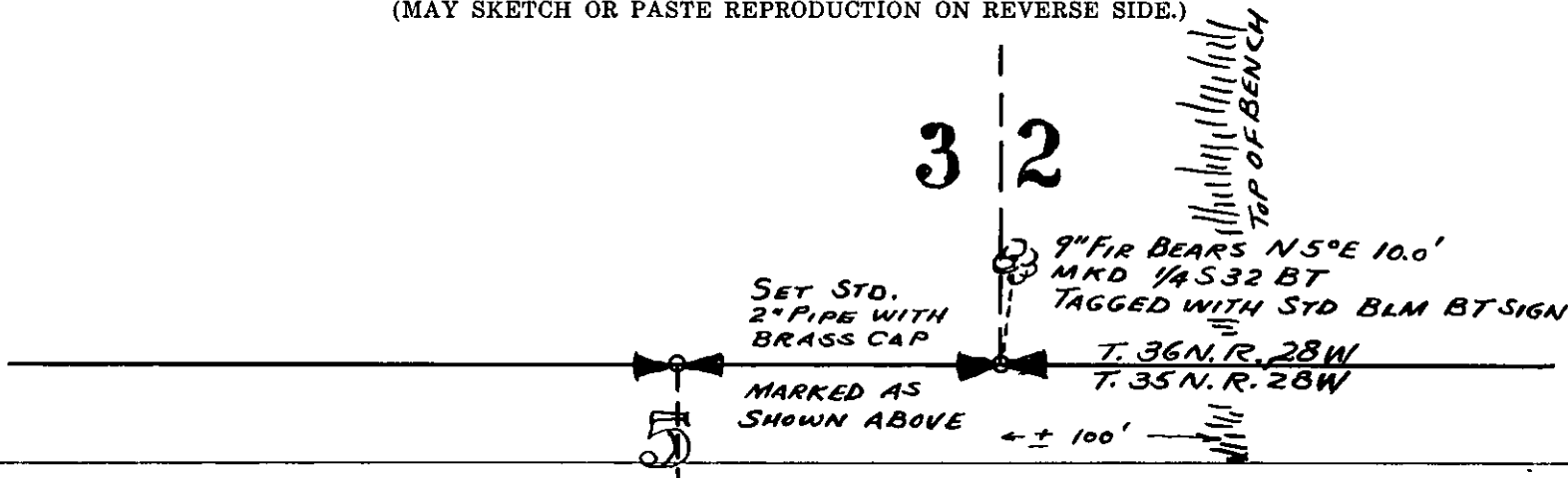
Original stone in place (split) from which a 9"  
fir (scribing almost entirely overgrown) bears  
N  $5^{\circ}$  E 10.0 Ft (This evidently is witness tree  
marked in 1930)

We reblazed and scribed this tree  $\frac{1}{4}$  S 32 B T

Set a 2" pipe with a brass cap marked thus

Marked tree with a standard BLM Bearing tree sign.

SKETCH, WITH COURSE AND DISTANCE TO ADJACENT CORNERS IF DETERMINED IN THIS SURVEY.  
(MAY SKETCH OR PASTE REPRODUCTION ON REVERSE SIDE.)



Surveyor's Seal

I, \_\_\_\_\_  
certify that the information shown herein is true and  
correct.

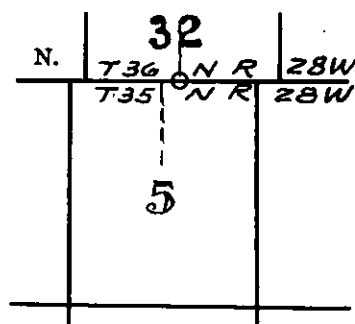
Signature of Ground Party Chief

I, \_\_\_\_\_  
certify that I have carefully performed or reviewed the  
work done on the diagrammed corner as reported on this  
recording form and approve the same.

*[Signature]*  
Signature of Surveyor

534 E. S.  
Registration Number

## DIAGRAM OF CORNER:



O= Corner recorded on the sheet

Office of Clerk and Recorder, County of Lincoln

This "corner record" was filed for record on the 2nd. day of August 19.66, was noted on the cross-index plat and is

assigned page No. 52, in book No. 1

ELEANOR L. VAUGHN, *[Signature]*  
County Official

1931

40.06 The  $\frac{1}{4}$  sec. cor. of secs. 5 and 32, identical with Cor. No. 1 of H. E. S. No. 278, which is a limestone 8x6x4 ins. above ground, firmly set, marked and witnessed as described in the official records.

This corner will hereafter refer to sec. 32 only, therefore, I erase the marks referring to sec. 5 from the SW. bearing tree, and mark a new one as follows:-

A fir, 4 ins. diam., bears N.  $17\frac{1}{2}^{\circ}$  E., 25 lks. dist., marked  $\frac{1}{4}$  S 32 B T  
Elevation 2457 ft.

STATE OF MONTANA  
COUNTY OF LINCOLN  
Filed this 2nd day of August A. D. 1931  
at Lincoln Montana  
By Edward J. Thompson County Clerk  
Walter J. Thompson Deputy