

## INSTRUCTIONS

1. Original and/or subsequent record used to evaluate the corner position.
2. Description of evidence found, note discrepancies in the record, state method of establishing lost or obliterated corners.
3. Description of monument and accessories set to perpetuate the corner position.
4. Sketch of corner, show all pertinent data which can best be shown in a sketch example, corner marking, topography ties, position of accessories, etc.
5. Certification must be signed and sealed by Land Surveyor registered in the State of Montana.
6. Fill in Cross Index & Section Diagram at bottom of sheet.

## CERTIFIED CORNER RECORDATION

Corner CC. of Secs. 4 & 5 T. 35 N. R. 27 W. P.M.M. Lincoln County

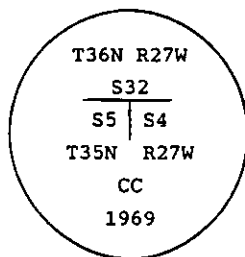
I. 1913 original G.L.O. record by Lewellyn D. Lyman & Royston C. Durnford: stone and marked 2 bearing trees.

1969 B.L.M. remonumentation record by Roy G. Leedy: "The closing cor. of secs. 4 and 5, on the N. bdy. of the Tp., monumented with a limestone, 12 x 12 x 5 ins., firmly set, mkd. with 2 notches on the W. edge, CC on the S. face, and and witnessed by the remains of the original bearing tree:

A stump, bears S33 1/4° E, 238 lks. dist., with butt of log mkd. S4 B. lying alongside.

At the corner point

Set an iron post, 30 ins. long, 2 1/2 ins. diam., 24 ins. in the ground with brass cap mkd.



from which

A larch, 7 ins. diam., bears S75 3/4° E, 29 lks. dist., mkd. T35N R27W S4 CC BT.

A fir, 10 ins. diam., bears S63° W, 45 lks. dist., mkd. T35N R27W S5 CC BT.

Bury the original stone alongside the iron post."

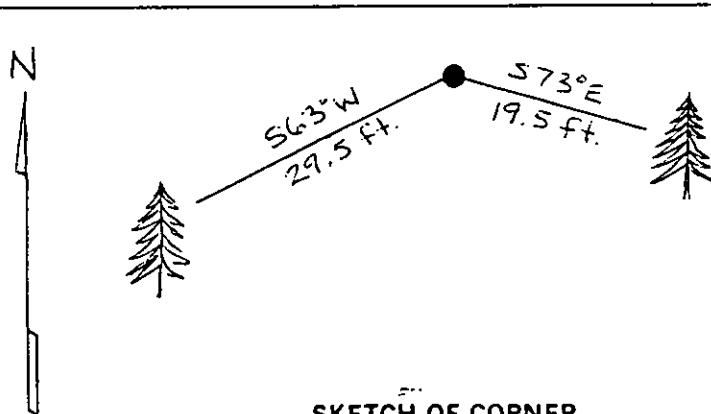
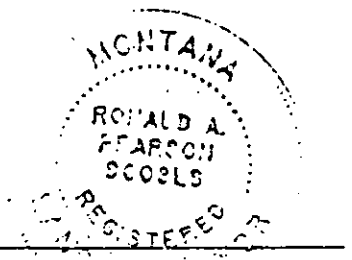
II. Found a 2 1/2 ins. diam. iron pipe, 7 ins. out of ground with 3 1/4 ins. diam. B.L.M. brass cap marked as shown above, from which

A larch, 8 ins. diam., bears S73° E, 19.5 ft. (29 lks.) dist., visible scribe marks.

A fir, 11 ins. diam., bears S63° W, 29.5 ft. (45 lks.) dist., visible scribe marks.

III. Painted red bands around the bearing trees and attached Land Survey Monument and Bearing Tree signs.

Magnetic Declination: 20° East



SKETCH OF CORNER

CERTIFICATION

I, Thomas Hommel

certify the information shown herein is true and correct.

Ronald A. Pearson

Signature Ground Party Chief

I, Ronald A. Pearson

certify that this Corner Record correctly represents work performed by me or under my direction in compliance with the "Corner Recordation Act" (70-22-101 et seq., M.C.A.)

Ronald A. Pearson

Signature of Surveyor & Seal

Date: 11/13/95 Reg. No. 9008LS

Employer: U.S. FOREST SERVICE

Office of Clerk and Recorder, County of LINCOLN. This "corner record" was filed for record on AUG21,1997 was noted on the cross-index plat and is assigned page No. 9928 in book No. CORAL M. CUMMINGS By DLB County Official

Cross Index No. A-09 T. 35N R. 27W P.M.M.

Sec. 4


• - corner this sheet