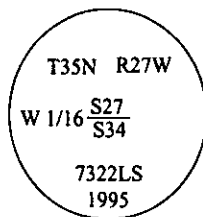


CERTIFIED CORNER RECORDATION

Corner W 1/16 Sec. 27&34 T. 35N R. 27W P.M., MT Lincoln County

- I. No previous history.
- II. Found a 1 in. diam. iron pipe, firmly set, 2 ins. out of ground..
- III. At the position of found iron pipe, accepted as per our survey, set a 2 1/2 in. diam., 30 in. long alum. pipe, 26 ins. in the ground, with a 3 1/4 in. diam. alum. cap mkd. as shown. Buried the iron pipe inside the alum. pipe.



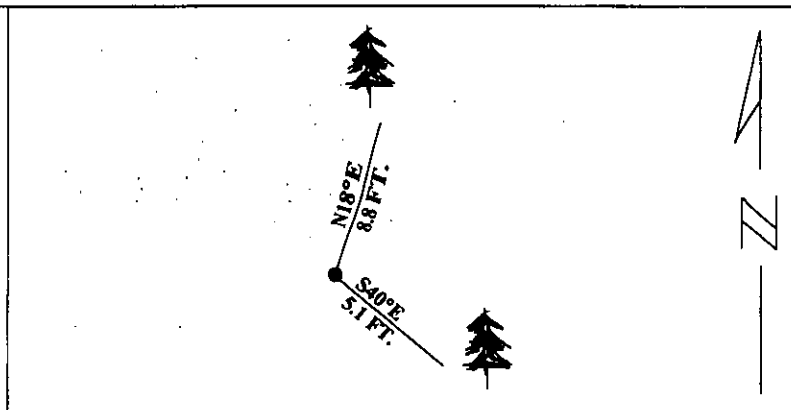
Established two new bearing trees:

- A fir, 9 ins. diam., bears N18°E, 8.8 ft. dist., mkd. "W 1/16 S27 BT".
- A larch, 9 ins. diam., bears S40°E, 5.1 ft. dist., mkd. "W 1/16 S34 BT".

Set a 6 ft. steel guard post with LSM and PB decals, S., 4 feet from monument.

Painted red bands around the bearing trees and attached Land Survey Monument and Bearing Tree signs.

Magnetic Declination: 20° East



SKETCH OF CORNER

CERTIFICATION	
I. <u>Thomas M. Hammel</u>	certify the information shown herein is true and correct.
	Signature Ground Party Chief
I. <u>Alvah F. Hughes</u>	
certify that this Corner Record correctly represents work performed by me or under my direction in compliance with the "Corner Records Act" (70-22-101, et seq., M.C.A.)	
	Signature of Surveyor & Seal
Date: <u>1/8/96</u>	
Reg. No.: <u>7322LS</u>	
Employer: <u>U.S. FOREST SERVICE</u>	

Office of Clerk and Recorder, County of LINCOLN. This "corner record" was filed for record on JULY 29, 1997 was noted on the cross-index plat and is assigned page No. 9794 in book No. _____

CORAL M. CUMMINGS By DLB
County Official

