

CERTIFIED CORNER RECORDATION

Corner S 1/4 Sec. 28 T. 35N R. 27W P.M., MT Lincoln County

- I. 1913 G.L.O. original record by Lewellyn D. Lyman and Royston C. Durnford: Set a limestone, 14x9x6 ins., 10 ins. in the ground, for 1/4 sec. cor., mkd. 1/4 on N. face.

from which:

A dead larch, 20 ins. in diam., bears S26 1/4°E, 158 lks. dist., mkd. "1/4 S33 BT".
A dead larch, 24 ins. in diam., bears N13 1/4°W, 493 lks. dist., mkd. "1/4 S28 BT".

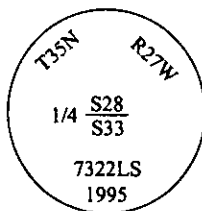
Raise a mound of stone, 2 ft. base, 1 1/2 ft. high, N. of corner.

- II. Found a stone, 6x5 ins., 4 ins. above ground, firmly set and mkd. "1/4" on N. face.

from which:

A high larch stump, bears N13°W, 325.4 ft. (493 lks.) dist., "1/4 S28" visible.

- III. At the position of found stone, set a 2 1/2 in. diam., 30 in. long alum pipe, 22 ins. in the ground, with a 3 1/4 in. alum. cap mkd. as shown. Raised a collar of stone around pipe. Buried the orig. stone next to the alum. pipe.



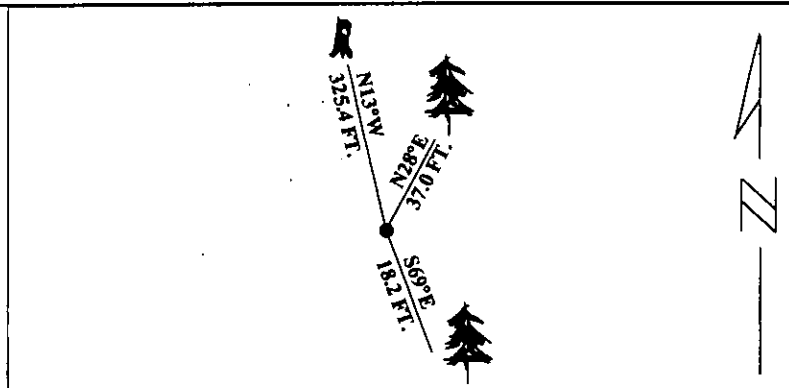
Established two new bearing trees:

A fir, 18 ins. diam., bears N28°E, 37.0 ft. dist., mkd. "1/4 S28 BT".
A larch, 11 ins. diam., bears S69°E, 18.2 ft. dist., mkd. "1/4 S33 BT".

Set a 6 ft. steel guard post with LSM decal, S., 4 feet from monument.

Painted red bands around the bearing trees and attached Land Survey Monument and Bearing Tree signs.

Magnetic Declination: 20° East



SKETCH OF CORNER

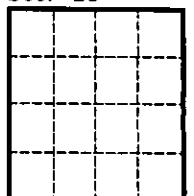
CERTIFICATION	
I. <u>Thomas M. Hommel</u>	certify the information shown herein is true and correct.
	Signature Ground Party Chief
I. <u>Alvah F. Hughes</u>	
certify that this Corner Record correctly represents work performed by me or under my direction in compliance with the "Corner Recordation Act", (70-22-101, et seq., M.C.A.)	
	Signature of Surveyor
Date: <u>1/8/96</u>	
Reg. No.: <u>7322LS</u>	
Employer: <u>U.S. FOREST SERVICE</u>	

Office of Clerk and Recorder, County of LINCOLN. This "corner record" was filed for record

on JULY 29, 1997 was noted on the cross-index plat and is assigned page No. 9793

in book No. JULY 29, 1997 CORAL M. CUMMINGS By DB
County Official

Sec. 28



• - corner this sheet

Cross Index No. V-11 T. 35N R. 27W PMM