

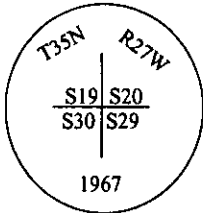
CERTIFIED CORNER RECORDATION

Corner SE Sec. Corner Sec. 19 T. 35N R. 27W P.M, MT Lincoln County

I. 1913 G.L.O. original record by Lewellyn D. Lyman and Royston C. Durnford: Set a limestone, 12x10x6 ins., 8 ins. in the ground, for cor. of secs. 19, 20, 29 and 30, mkd. with 2 notches on S. and 5 notches on E. edge, from which:

- A fir, 14 ins. diam., bears N54 1/2°E, 41 lks. dist., mkd "T35N R27W S20 BT".
- A fir, 14 ins. diam., bears S24 1/4°E, 111 lks. dist., mkd "T35N R27W S29 BT".
- A larch, 18 ins. diam., bears S60°W, 57 lks. dist., mkd "T35N R27W S30 BT".
- A larch, 12 ins. diam., bears N39 1/2°W, 43 lks. dist., mkd "T35N R27W S19 BT".

1967 B.L.M. remonumentation record by Woodrow E. Damm et al: The corner of secs. 19, 20, 29 and 30, as determined from the remains of the original bearing trees. At the corner point, set an iron post, 30 ins. long, 2 1/2 ins. diam., 24 ins. in the ground, with brass cap marked:



Found 3 stumps from orig. BT's, all scribed and all at record bearing and distances in sec's 20, 29 and 30. Established 3 new bearing trees.

II. Found a B.L.M. brass cap, 2 in. out of ground, firmly set, in a small collar of stone, mkd. as shown above. from which:

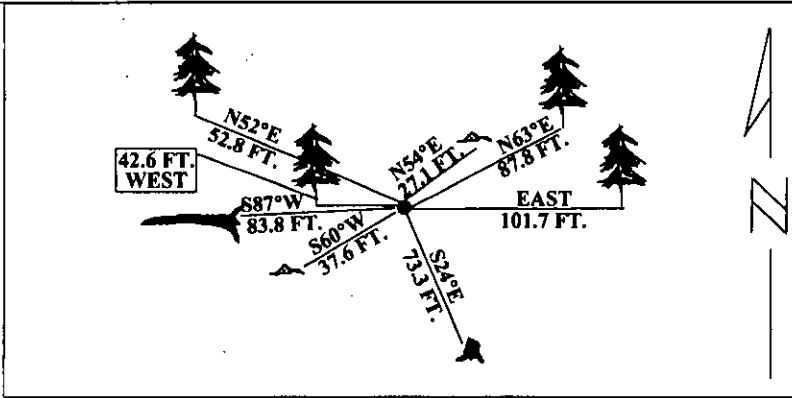
- A root crown, bears N54°E, 27.1 ft. (41lks.) dist.. (G.L.O.)
- A larch, 13 ins. diam., bears N63°E, 87.8 ft. (133 lks.) dist., healed face. (B.L.M.)
- A stump, bears S24°E, 73.3 ft. (111 lks.) dist., visible scribe.. (G.L.O.)
- A root crown, bears S60°W, 37.6 ft. (57 lks.) dist.. (G.L.O.)
- A downed larch, bears S87°W, 83.8 ft. (127 lks.) dist., visible scribe. (B.L.M.)
- A larch, 15 ins. diam., bears N67°W, 52.8 ft. (80 lks.) dist., healed face. (B.L.M.)
- The orig. G.L.O. BT in sec. 19: no evidence found.

III. Established two new bearing trees:

- A larch, 14 ins. diam., bears EAST, 101.7 ft. dist., mkd. "T35N R27W S29 BT".
- A larch, 15 ins. diam., bears WEST, 42.6 ft. dist., mkd. "T35N R27W S30 BT".

Painted red bands around the bearing trees and attached Land Survey Monument and Bearing Tree signs.

Magnetic Declination: 20° East



SKETCH OF CORNER

CERTIFICATION

I. Mark Federman certify the information shown herein is true and correct. Signature Ground Party Chief
I. Alvah F. Hughes certify that this Corner Record correctly represents work performed by me or under my direction in compliance with the "Corner Recordation Act", 70-22 (01) at sec., M.C.A. Signature of Surveyor & Seal
Date: 12/14/95
Reg. No.: 7322LS
Employer: U.S. FOREST SERVICE

Office of Clerk and Recorder, County of LINCOLN. This "corner record" was filed for record on JULY 29, 1997 was noted on the cross-index plat and is assigned page No. 9788, in book No. CORAL M. CUMMINGS County Official

Sec. 19

• - corner this sheet