

# CERTIFIED CORNER RECORDATION

Corner S 1/4 Sec. 17 T. 35N R. 27W P.M., MT Lincoln County

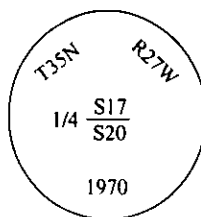
I. 1913 G.L.O. original record by Lewellyn D. Lyman and Royston C. Durnford: Set a limestone, 18x12x8 ins., 12 ins. in the ground, for 1/4 sec. cor., mkd. 1/4 on N. face, and 2 bearing trees.

1970 B.L.M. remonumentation record by Joseph E. French: The 1/4 cor. of sec's. 17 and 20, monumented with a limestone, 18x12x8 ins., firmly set, mkd. 1/4 on N. face, and witnessed by the remains of the original bearing trees:

A fir stump, 12 ins. diam., bears S17 3/4°W, 40 lks. dist., mkd "1/4 S20 BT".

A fir stump, 20 ins. diam., bears N75°W, 39 lks. dist., mkd "1/4 S17 BT".

At the corner point, set an iron post, 30 ins. long, 2 1/2 ins. diam., 24 ins. in the ground with brass cap mkd.:



Established one new bearing tree:

A pine, 5 ins. diam., bears S85°E, 56 lks. dist., mkd "X BT".

bury the orig. stone alongside iron pipe and raise a mound of stone, 3 ft. diam., around monument.

II. Found a B.L.M. brass cap, 15 in. out of ground, firmly set in a small collar of stone, mkd. as shown above; from which:

A pine, 12 ins. diam., bears S85°E, 36.9 ft. (56 lks.) dist., healed face. (B.L.M.)

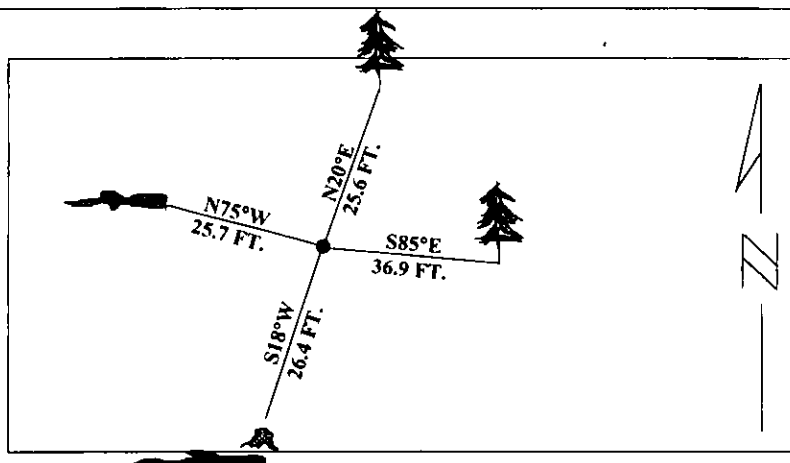
A fir stump and downed tree, 20 ins. diam., bears S18°W, 26.4 ft (40 lks.) dist., with visible scribe.

A downed rotten tree, bears N75°W, 25.7 ft (39 lks.) dist., with visible scribe.

III. Established one new bearing tree:

A pine, 10 ins. diam., bears N20°E, 25.6 ft. dist., mkd. 1/4 S17 BT.

Painted red bands around the bearing trees and attached Land Survey Monument and Bearing Tree signs.  
Magnetic Declination: 20° East



SKETCH OF CORNER

## CERTIFICATION

I. Mark Federman

certify the information shown herein is true and correct.

*Mark Federman*

Signature Ground Party Chief

I. Alvah F. Hughes

certify that this Corner Record correctly represents work performed by me or under my direction in compliance with the "Corner Recordation Act", (70-22-101 et seq., M.C.A.)

*Alvah F. Hughes*

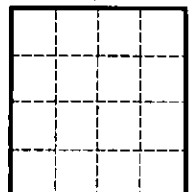
Signature of Surveyor or Seal

Date: 12/13/95

Reg. No.: 7322LS

Employer: U.S. FOREST SERVICE

Sec. 17



• - corner this sheet

Office of Clerk and Recorder, County of **LINCOLN**. This "corner record" was filed for record on **JULY 29, 1997** was noted on the cross-index plat and is assigned page No. **9787** in book No. **CORAL M. CUMMINGS** By *DLB*

County Official

Cross Index No. N-7 T. 35N R. 27W PMM

Adopted July 1, 1981, Montana Board of Professional Engineers & Land Surveyors