

CERTIFIED CORNER RECORDATION

Corner E 1/4 Sec. 19 T. 35N R. 27W P.M., MT Lincoln County

I. 1913 G.L.O. original record by Lewellyn D. Lyman and Royston C. Durnford: Set a limestone, 15x12x6 ins., 10 ins. in the ground, for 1/4 sec. cor., mkd. 1/4 on W. face, from which:

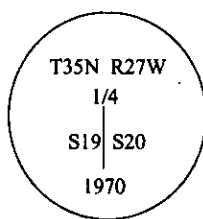
A larch, 40 ins. diam., bears S46 1/4°E, 28 lks. dist., mkd "1/4 S20 BT".

A larch, 18 ins. diam., bears S18°W, 5 lks. dist., mkd "1/4 S19 BT".

1970 B.L.M. remonumentation record by Joseph E. French: The 1/4 sec. cor. of secs. 19 and 20, monumented with a limestone, 15x12x6 ins., firmly set, mkd. 1/4 on the W. face, and witnessed by the remains of one original bearing tree:

A larch stump, 40 ins. diam., bears S18°E, 28 lks. dist., mkd "1/4 S20 BT" (rec. S46 1/4°E)

At the corner point, set an iron post, 30 ins. long, 2 1/2 ins. diam., 24 ins. in the ground, with brass cap mkd:



from which:

A larch, 16 ins. diam., bears S24 1/2°E, 22 lks. dist., mkd. 1/4 S20 BT.

A larch, 7 ins. diam., bears S72 1/4°W, 26 lks. dist., mkd. 1/4 S19 BT.

bury the original stone alongside the iron post.

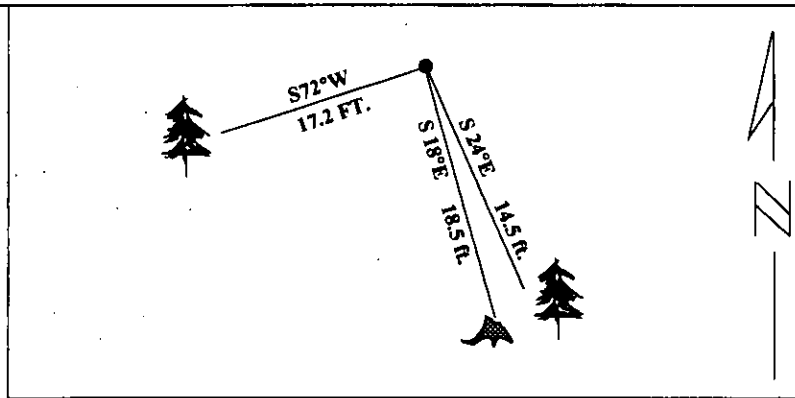
II. Found a B.L.M. brass cap, 2 ins. below ground level, firmly set and mkd. as shown above, from which:

A larch, 16 ins. diam., bears S24°E, 14.5 ft. (22 lks.) dist., healed face.

A rotten stump, bears S16°E, 18.5 ft. (28 lks.) dist., visible scribe. (rec. S46 1/4°E)

A larch, 8 ins. diam., bears S72°W, 17.2 ft. (26 lks.) dist., healed face.

III. Painted red bands around the bearing trees and attached Land Survey Monument and Bearing Tree signs.
Magnetic Declination: 20° East



SKETCH OF CORNER

CERTIFICATION

I, Mark Federman

certify the information shown herein is true and correct.

Mark Federman

Signature Ground Party Chief

I, Alvah F. Hughes

certify that this Corner Record correctly represents work performed by me or under my direction in compliance with the "Corner Recordation Act", (70-22-101, et seq., M.C.A.)

Alvah F. Hughes

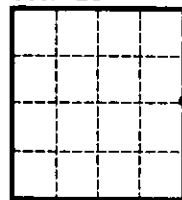
Signature of Surveyor & Seal

Date: 12/13/95

Reg. No.: 7322LS

Employer: U.S. FOREST SERVICE

Sec. 28



Office of Clerk and Recorder, County of LINCOLN. This "corner record" was filed for record on JULY 29, 1997 was noted on the cross-index plat and is assigned page No. 9786 in book No. CORAL M. CUMMINGS By RUB

County Official

Cross Index No. T-15 T. 35N R. 27W PMM

Adopted July 1, 1981, Montana Board of Professional Engineers & Land Surveyors